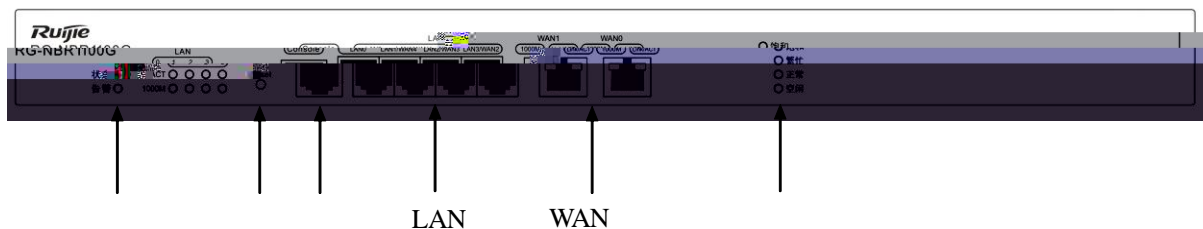


RG-NBR1100G

1.	NBR	2
1.1	NBR1100G	2
2.		4
3.		8
3.1		8
3.2		8
3.3		8
4.		9
4.1	IP	9
4.2	PPPoE	13
4.3	DHCP IP	16
5. Web		21
5.1	Web	21
5.2		22
6. NBR		29
6.1	NBR	29
6.1.1	WAN	29
6.1.2	LAN	29
6.1.3		29
6.2		30
6.2.1		30
6.2.2		31

1. NBR

1.1 NBR1100G



1-4 RG-NBR1100G

NBR1100G

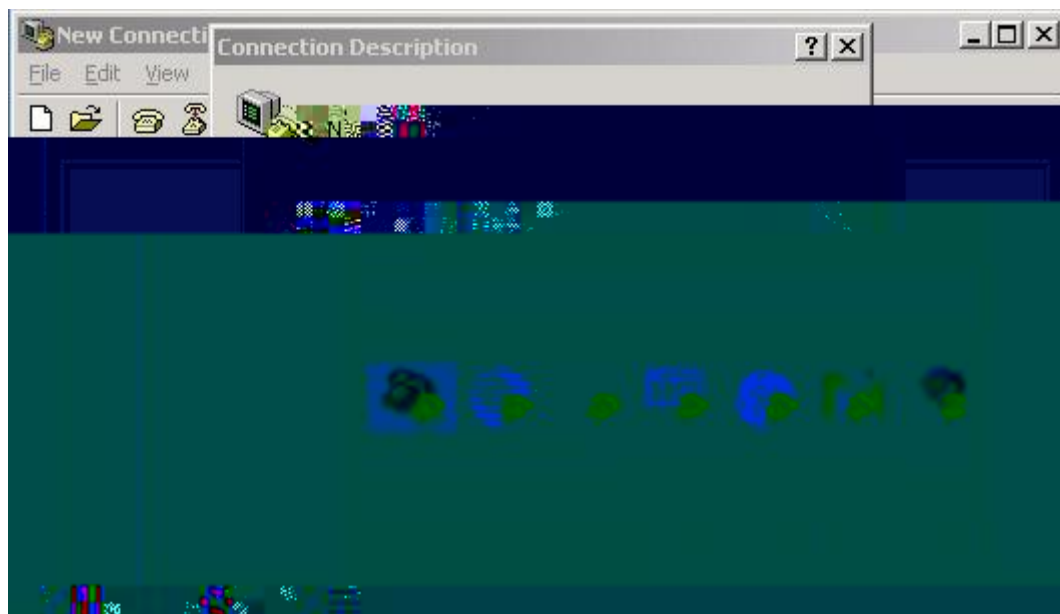
	NBR1100G			
WAN	2	10/100/1000M		
LAN	4	10/100/1000M LAN1-LAN3	3	LAN WAN
	1	Console		

NBR

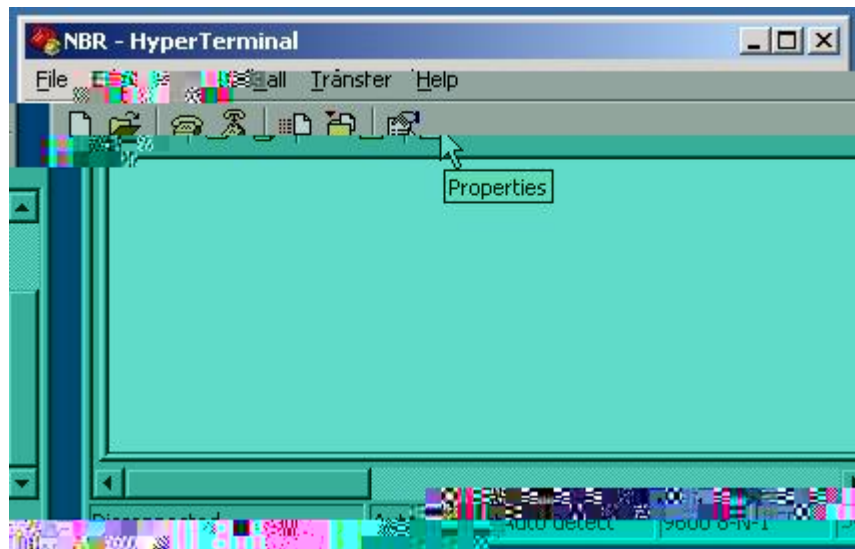
	0 50
	-40 70
	10 90%RH



2-3

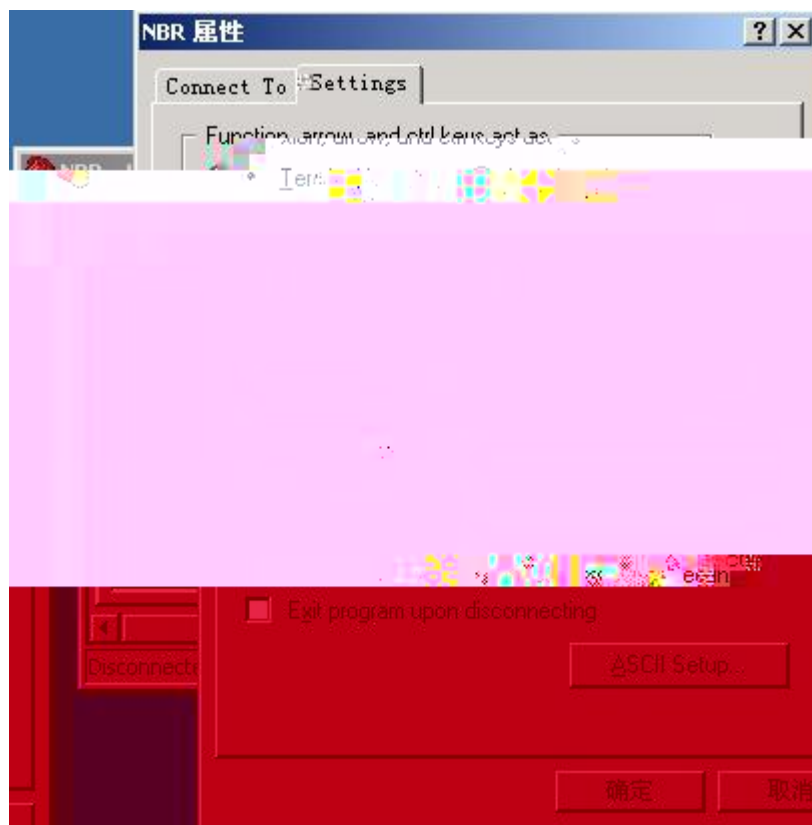


2-4



2-7

COM



2-8

ANSI

3.

3.1

-
-



A

3.2

3.3

-
-
-
-

	NBR80	NBR2000
" Status"	NBR2500/NBR3000	" SYSTEM"
	NBR1100E/NBR1200/NBR1200G/NBR1100G	" "
	Console	

NBR


```
1.  
2.  
3.  
    (1 - 3)[3]:  
        [yes]:  
WAN    ping    [no]:  
        IP
```

```
service timestamps debug datetime
service timestamps log datetime
no service password-encryption
!
interface FastEthernet 0/0
 ip nat inside
 ip access-group 3198 in
 no ip redirects
 no ip mask-reply
 no ip proxy-arp
 ip address 192.168.0.1 255.255.255.0
 arp gratuitous-send interval 1 5
!
interface FastEthernet 1/0
 ip nat outside
 ip access-group 3199 in
 no ip redirects
 no ip mask-reply
 no ip proxy-arp
 ip address 218.5.19.2 255.255.255.0
 duplex auto
 speed auto
!
interface FastEthernet 1/1
 duplex auto
 speed auto
 shutdown
!
interface Null 0
!
ip nat pool nbr_setup_build_pool prefix-length 24
 address 218.5.19.2 218.5.19.2 match interface FastEthernet 1/0
!
ip nat inside source list 99 pool nbr_setup_build_pool
ip nat translation max-entries 7000
ip nat translation per-user 0.0.0.0 1000
ip nat translation udp-timeout 150
ip nat translation icmp-timeout 30
ip nat translation tcp-timeout 600
ip nat translation finrst-timeout 20
ip nat translation dns-timeout 30
security anti-wan-attack level high
security anti-lan-attack
!
ip route 0.0.0.0 0.0.0.0 FastEthernet 1/0 218.5.19.1
!
line con 0
line vty 0
 login
 password 7 110022081d5e0834012e3e
line vty 1
 login
 password 7 072c06221a062210014f1f
line vty 2
 login
 password 7 093d101f2811175f1e2400
line vty 3
 login
 password 7 050a03330c3b1007340000
line vty 4
 login
 password 7 08112a181d330007590833
```

```
!  
!  
end
```

4.2 PPPoE

ADSL

Internet

```

:
1. IP
2. PPPoE
3. DHCP IP
   (1 - 3)[1]:
   PPPoE      :
   PPPoE      :pppoepassword
   ISP        Mbps (1-100)[ 100]:

:          telnet                LAN IP
                                   LAN

LAN IP[192.168.0.1]:
LAN      [255.255.255.0]:
        ARP[yes]:
                (1 - 3600)[1]:
1          (1 -100)[5]:
        [no]:          NBR

        [yes]:
        [yes]:

:
1.
2.
3.
   (1 - 3)[3]:
   [yes]:
WAN ping [no]:
   IP      [no]:

   DNS     (DNS   ) [no]:

:
:
:
telnet      :
:
WAN 0:
:
:
: 100 Mbps
:
: 192.168.0.1 255.255.255.0
   ARP: 1 Seconds
:
:
:
WAN ping :
   DNS   (DNS   ):
   [yes]:

```

!
NBR#show running-config


```

!
interface Null 0
!
!
ip nat pool nbr_setup_build_pool prefix-length 24
address interface dialer 0 match interface dialer 0
!
ip nat inside source list 99 pool nbr_setup_build_pool
ip nat translation max-entries 7000
ip nat translation per-user 0.0.0.0 1000
ip nat translation udp-timeout 150
ip nat translation icmp-timeout 30
ip nat translation tcp-timeout 600
ip nat translation finrst-timeout 20
ip nat translation dns-timeout 30
security anti-wan-attack level high
security anti-lan-attack
!
ip route 0.0.0.0 0.0.0.0 dialer 0
!
line con 0
line vty 0
  login
  password 7 04220b032c
line vty 1
  login
  password 7 1000012217
line vty 2
  login
  password 7 08163c1000
line vty 3
  login
  password 7 072b102a07
line vty 4
  login
  password 7 050d153b11
  !
  !
end

```

```

          PC
NBR  WAN  LAN

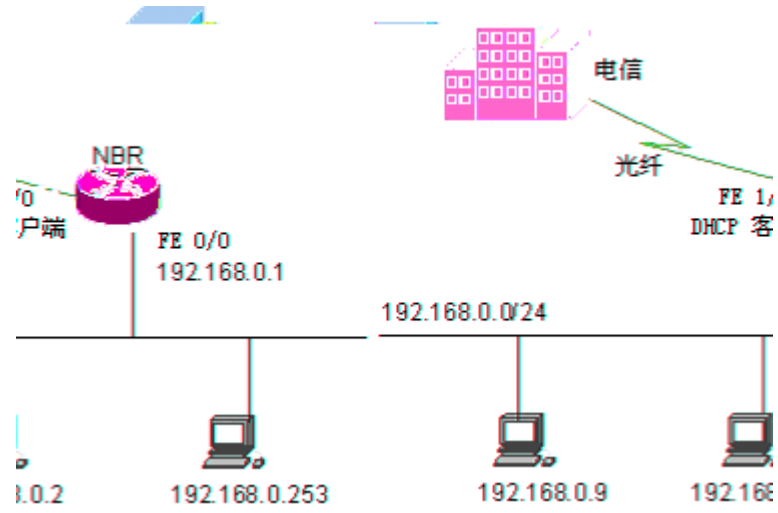
```

4.3 DHCP IP

```

          Internet
          DHCP
WAN 192.168.0.1  WAN  LAN  IP  LAN
          Internet  LAN  WAN  NAT

```



4-3 DHCP IP

NBR (NBR1200)

```
NBR >enable
!
NBR#setup
```

```
-----
ctrl-c      '['

:
[NBR]:

telnet
WAN (1- , 2 - , 3- , ) [1]:

internet WAN :
0. WAN 0
1. WAN 1
(0 - 1)[0]:

:
1. IP
2. PPPoE
3. DHCP IP
(1 - 3)[1]:3
ISP Mbps (1-100)[ 100]:
ARP[no]:

: telnet LAN IP
LAN
LAN IP[192.168.0.1]:
LAN [255.255.255.0]:
ARP[yes]:
(1 - 3600)[1]:
```

1

(1 -100)[5]:

[no]: NBR

[yes]:

[yes]:

:

~~14-11 10-1 4-1~~

```
access-list 99 permit any
dialer-list 1 protocol ip permit
!
service sequence-numbers
service timestamps debug datetime
service timestamps log datetime
no service password-encryption
!
interface FastEthernet 0/0
 ip nat inside
 ip access-group 3198 in
 no ip redirects
 no ip mask-reply
 no ip proxy-arp
 ip address 192.168.0.1 255.255.255.0
 arp gratuitous-send interval 1 5
!
interface FastEthernet 1/0
 ip nat outside
 ip access-group 3199 in
 no ip redirects
 no ip mask-reply
 no ip proxy-arp
 ip address dhcp
 duplex auto
 speed auto
!
interface FastEthernet 1/1
 duplex auto
 speed auto
 shutdown
!
interface Null 0
!
!
ip nat pool nbr_setup_build_pool prefix-length 24
 address interface FastEthernet 1/0 match interface FastEthernet 1/0
!
```

```
security anti-wan-attack level high
security anti-lan-attack
!
!
line con 0
line vty 0
  login
  password 7 131717470235173e3f0057
line vty 1
  login
  password 7 04251d0b31172a00012217
line vty 2
  login
  password 7 0132464e380c032b102a07
line vty 3
  login
  password 7 08112a181d330007590833
line vty 4
  login
  password 7 03513215092a063a061735
!
!
end
```

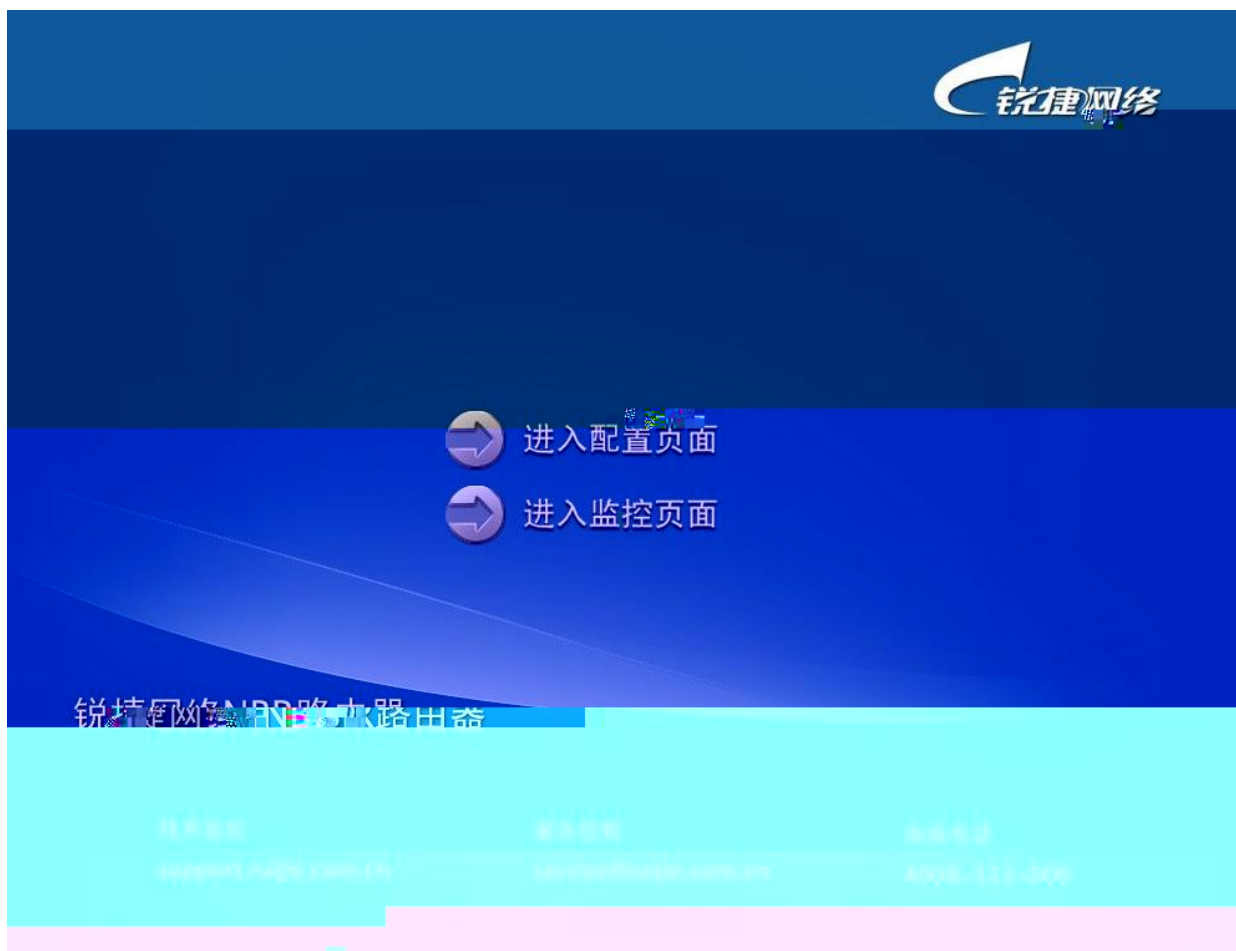
5. Web

Web

CD-ROM

5.1 Web

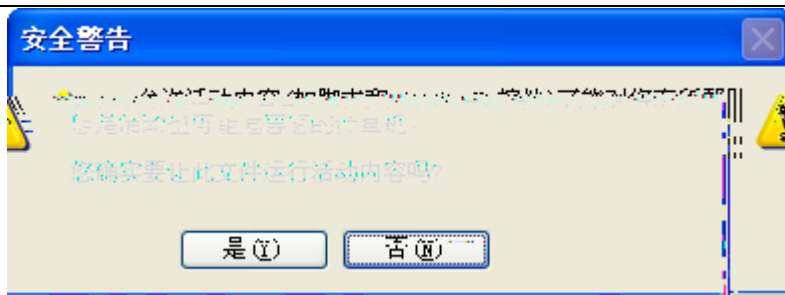
	LAN	WAN	IP	PC	IP
IP					http://192.168.1.1



5-1

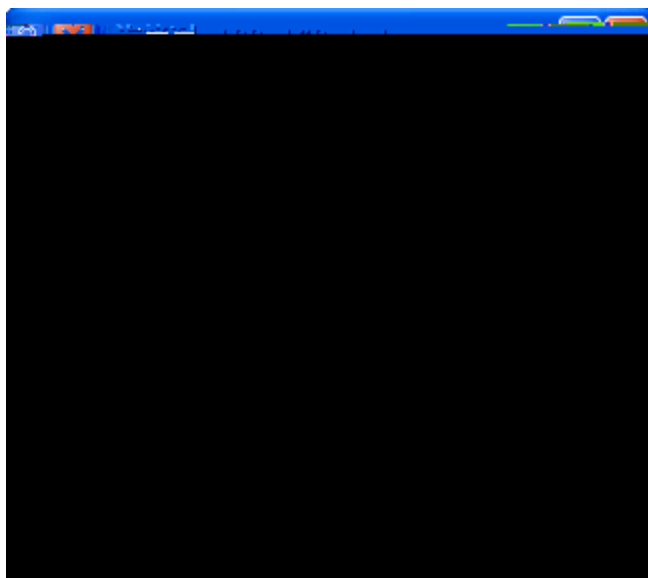
" WEB " " "

WEB " (Y) WEB



5-2 " (Y)"

" WEB " " WEB
 admin



5-3

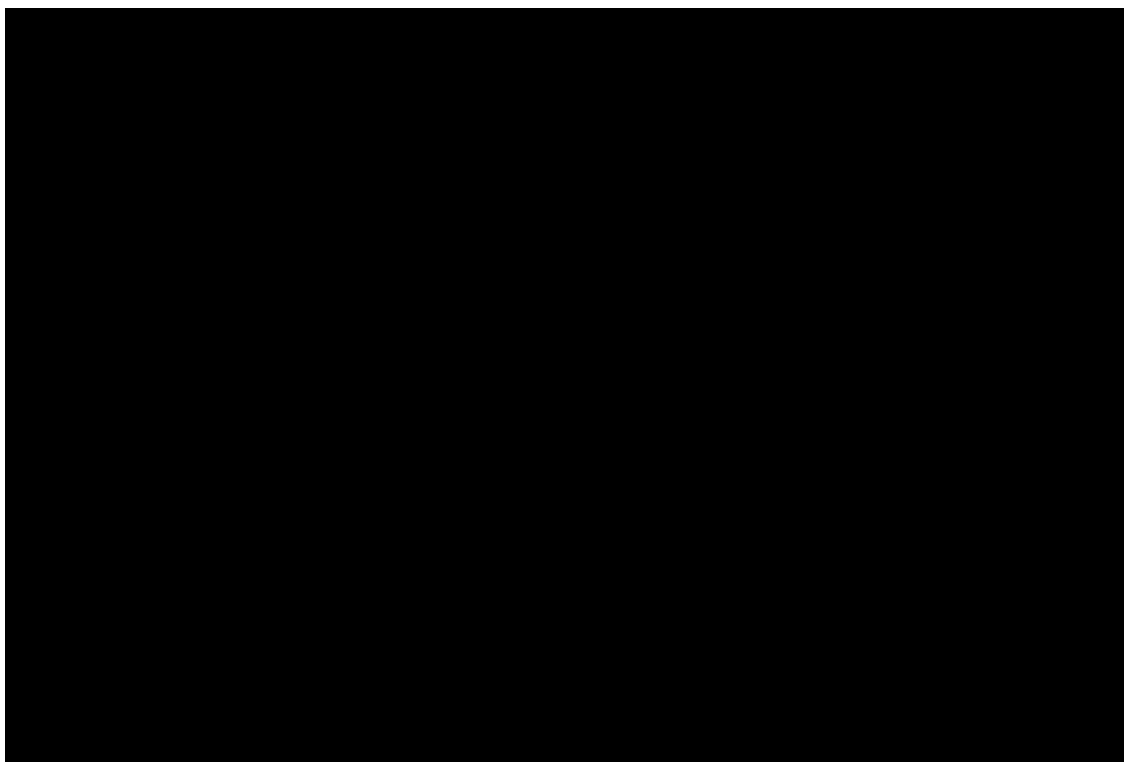
web flash web htm js

" " " WED "

Web

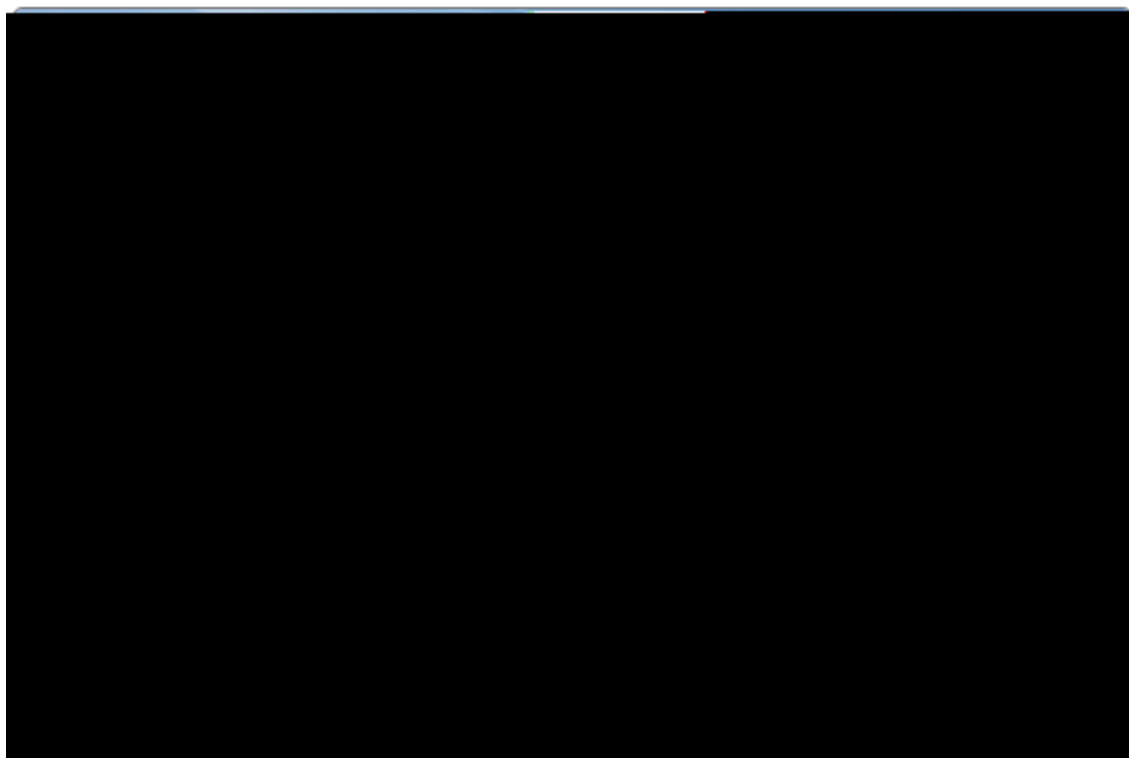
5.2

NBR
 NBR



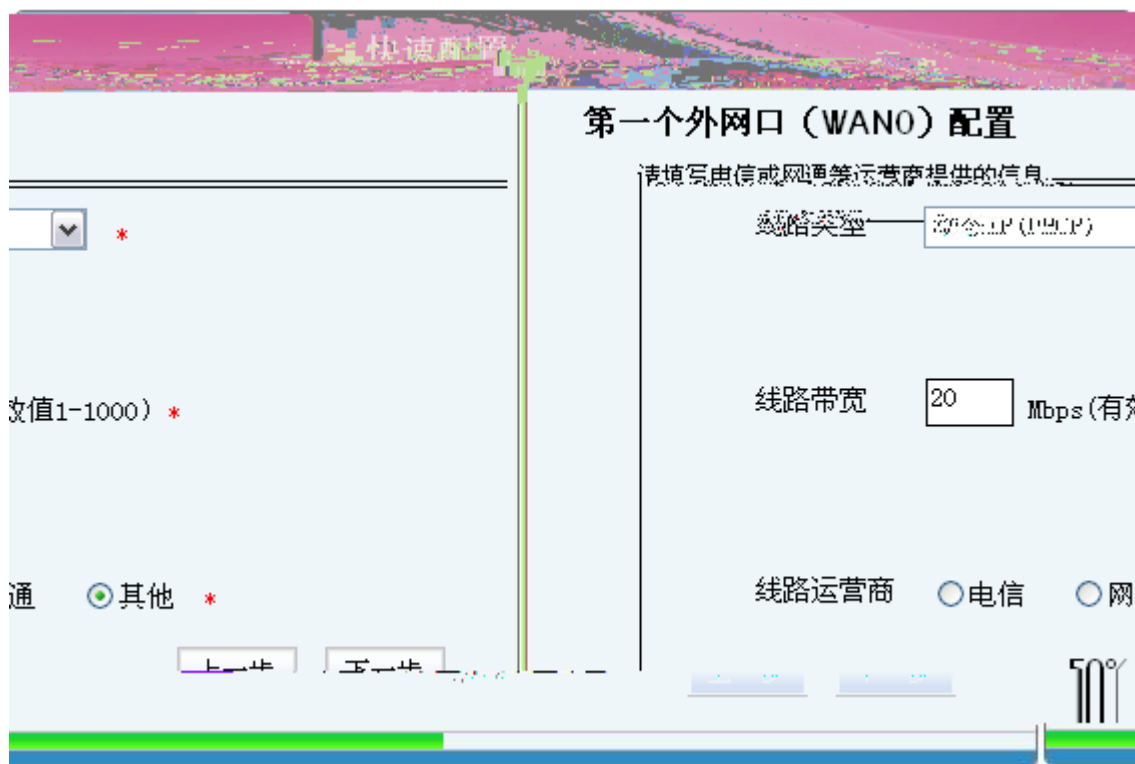
5-4

" " LAN



5-5 LAN

LAN IP " " WAN IP Web
LAN IP



5-7 WAN0 IP

" PPPoE"



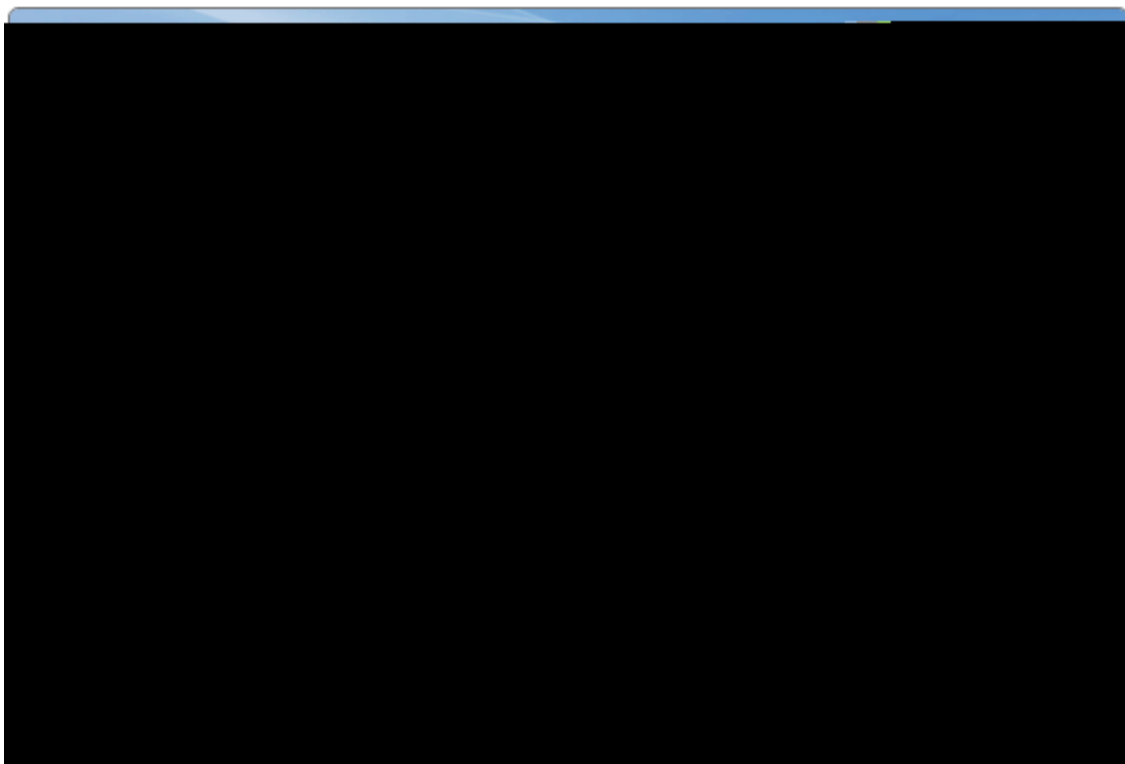
5-8

ADSL

1-1000M

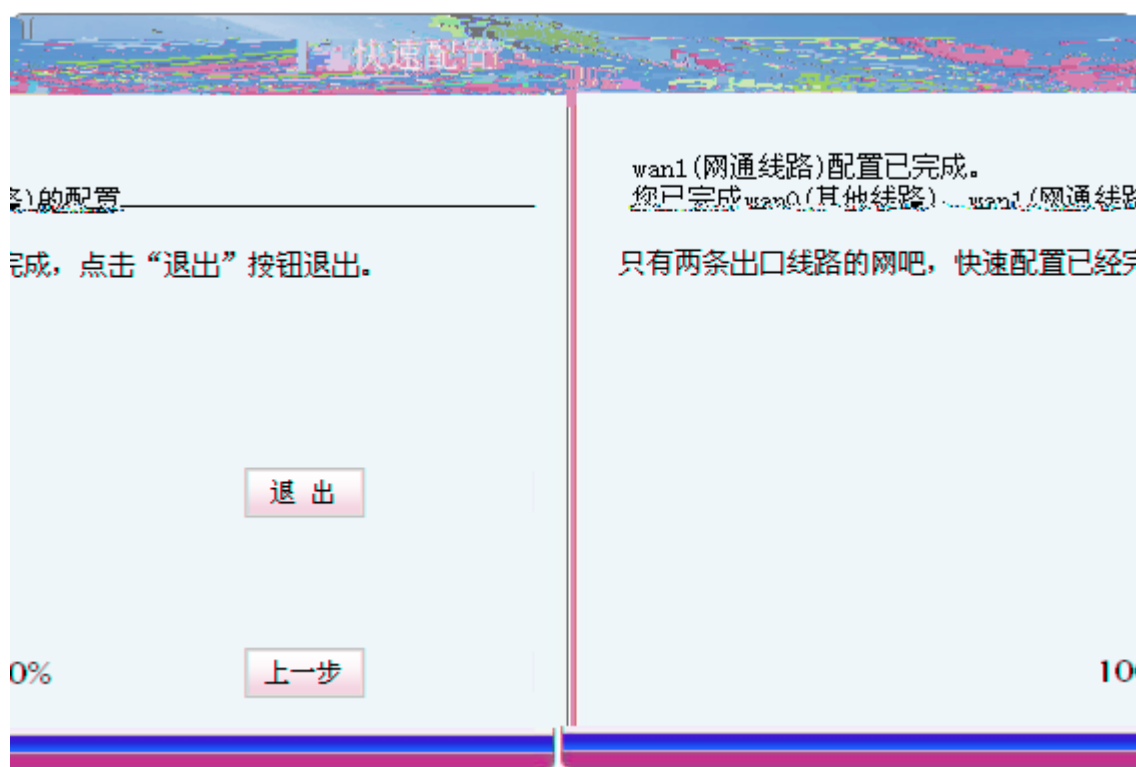
WAN0

WAN0



5-9 WAN0 PPPoE

WAN0				WAN1	"		(wan1)"
	"	"	"	"			
	LAN	IP				IP	Web
	WAN		WAN1			WAN	WAN

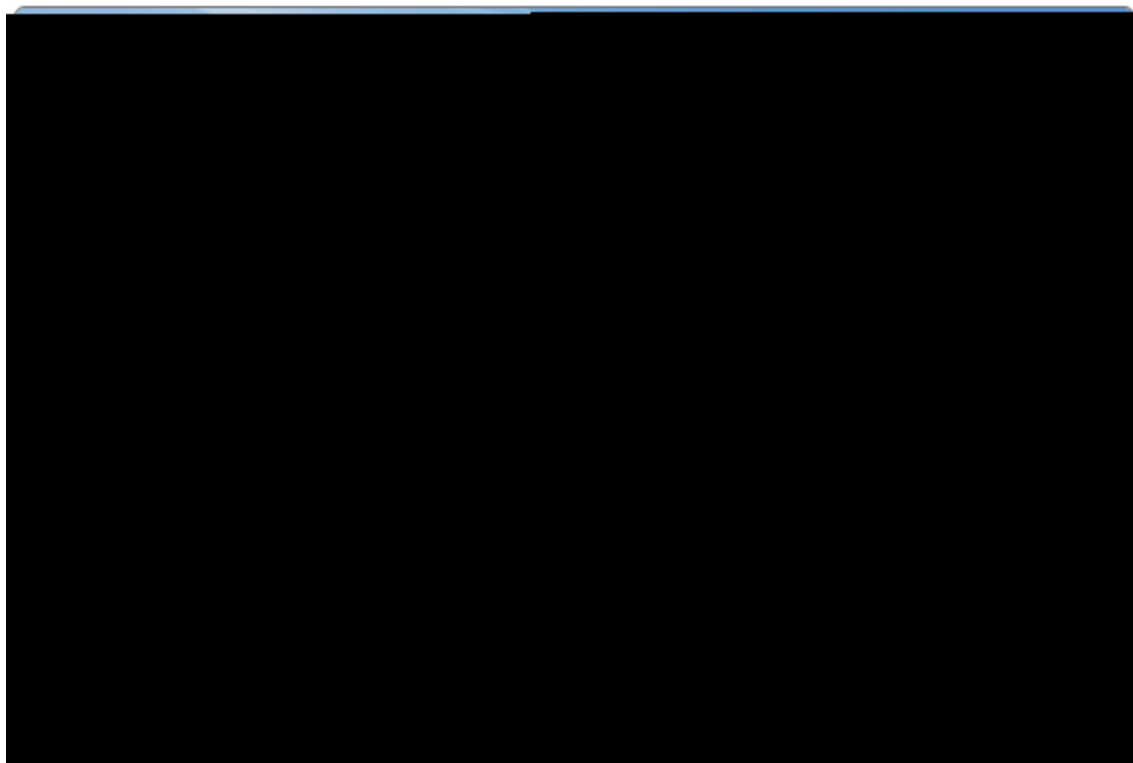


5-10 WAN

WAN

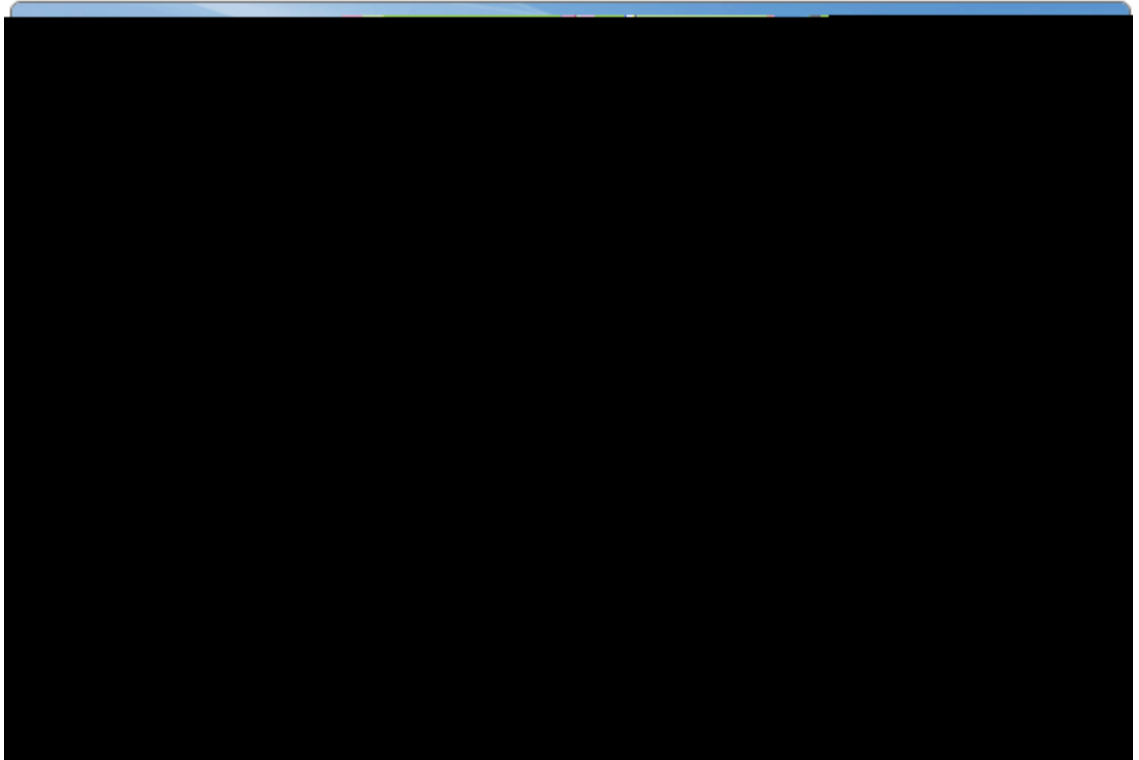
" "

WAN



5-11

" "



5-12

LAN IP

IP

Web

6. NBR

NBR

NBR

NBR



6-2 LAN

- i. NBR
- ii. IN NBR LAN NBR OUT
- iii.
- iv.
- v. NBR NBR

6.2.2

RJ45