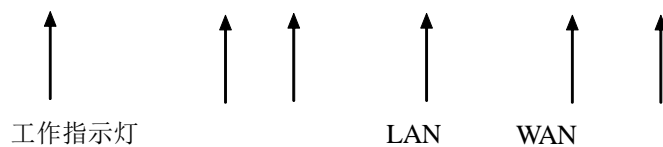


RG-NBR1200

1.	NBR	2
1.1	NBR1200	2
2.		4
3.		8
3.1		8
3.2		8
3.3		8
4.		9
4.1	IP	9
4.2	PPPoE	13
4.3	DHCP IP	16
5. Web		21
5.1	Web	21
5.2		22
6. NBR		29
6.1	NBR	29
6.1.1	WAN	29
6.1.2	LAN	29
6.1.3		29
6.2		30
6.2.1		30
6.2.2		31

1. NBR

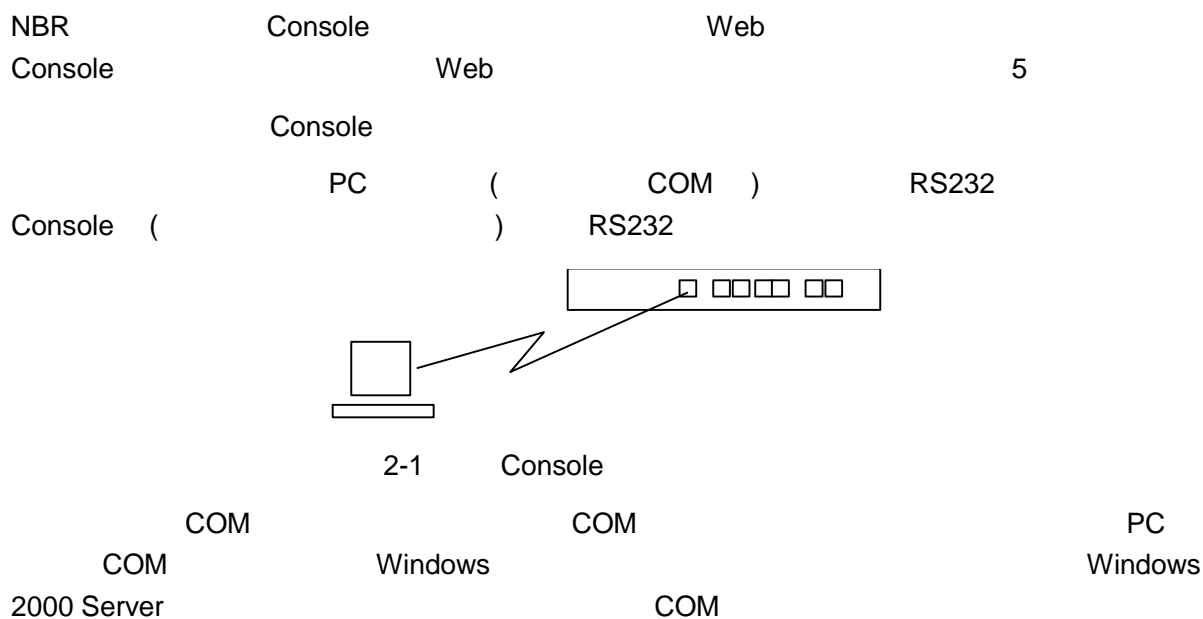
1.1 NBR1200

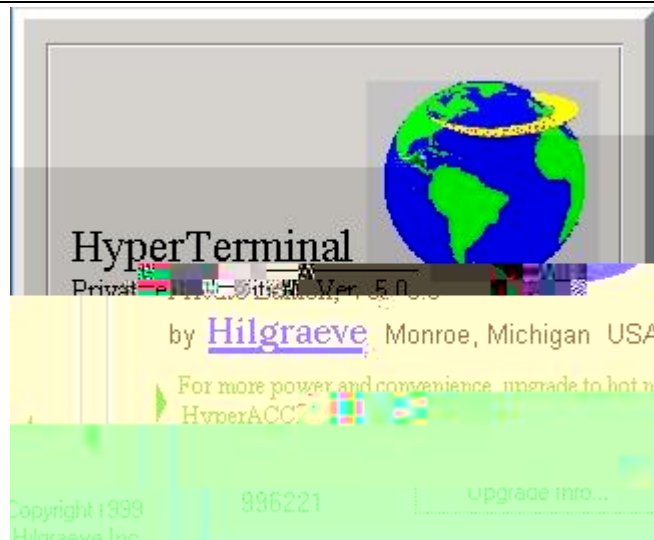


1-3 RG-NBR1200

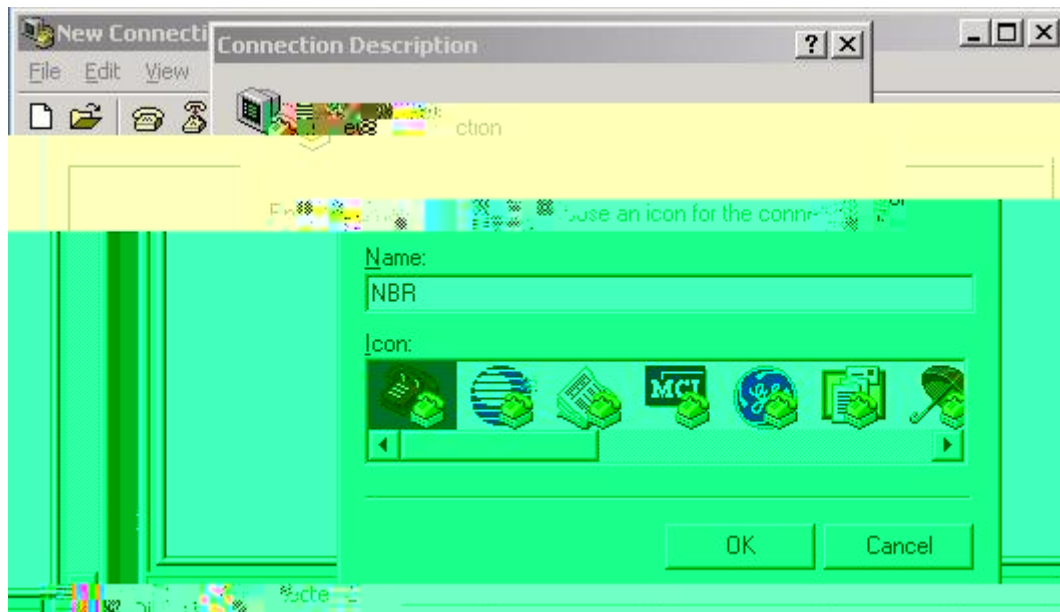
NBR1200

2.





2-3



2-4

3.

3.1

-
-



A

3.2

3.3

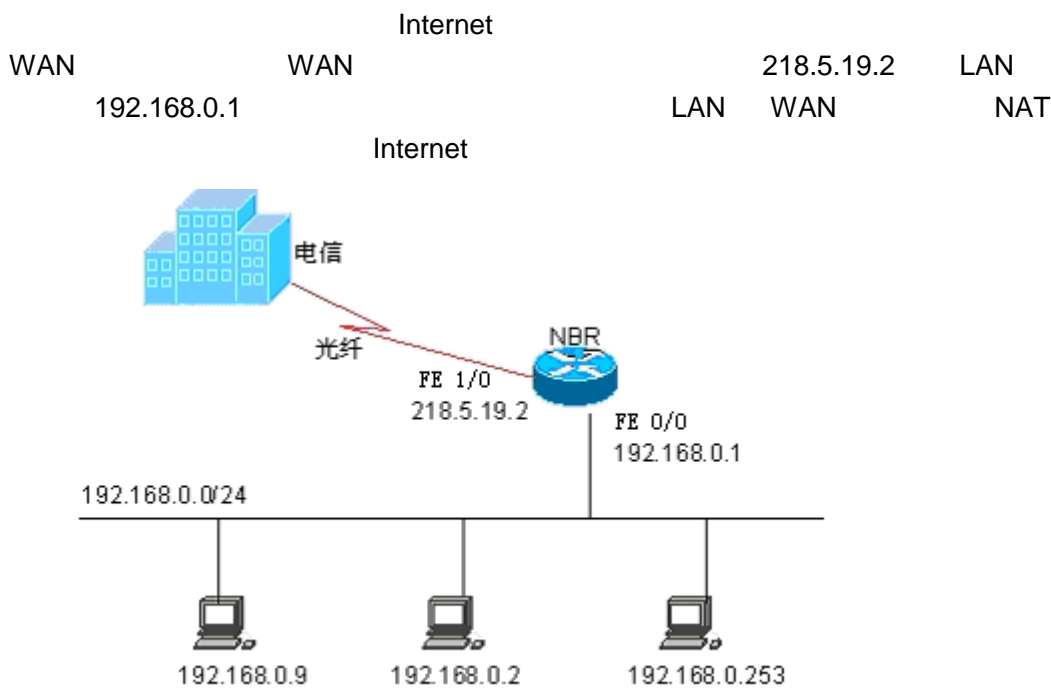
-
-

4.

```

WEB
Console
enable
enable
NBR>
NBR>enable
Password:      <=
NBR# setup    <=
                    setup
                    NBR  setup
                    NBR  RGOS
                    CD-ROM
RGOS
www.ruijie.com.cn
                    NBR  setup
    
```

4.1 IP



4-1 IP

NBR (NBR1200)

```

NBR>enable
!
NBR#setup
    
```

```

-----
ctrl-c          '['

:
[NBR]:

telnet
WAN (1- ,2 - ,3- , ) [1]:

internet WAN :
0. WAN 0
1. WAN 1
(0 - 1)[0]:

:
1. IP
2. PPPoE
3. DHCP IP
(1 - 3)[1]:
WAN IP:
WAN [255.255.255.252]:
IP :
ISP [no]:
ISP Mbps (1-100)[ 100]:
ARP[no]:

: telnet LAN IP
LAN
LAN IP[192.168.1.1]:
LAN [255.255.255.0]:
ARP[yes]:
(1 - 3600)[1]:
1 (1 -100)[5]:

[no]:

(LAN):
(0 - 3):

(LAN):
(0 - 3) ', ' :

:
0.
1.
2.
(0 - 2):

[yes]:
[yes]:

:

```

```

1.
2.
3.
    (1 - 3)[3]:
        [yes]:
WAN    ping    [no]:
        IP      [no]:

        DNS     (DNS   ) [no]:

        :
        :
        :admin
telnet      :remoteuser
        :
WAN 0:     IP
        : 218.5.19.2 255.255.255.0
        :218.5.19.1
NAT       :
        : 100 Mbps
        :
        : 192.168.0.1 255.255.255.0
        ARP: 1 Seconds
        :
        : LAN0           : LAN3
        :
        :
        :
WAN    ping    :
        DNS     (DNS   ):
        [yes]:

LAN    IP           telnet LAN    IP           !

!
.
NBR1#show running-config
Building configuration...
Current configuration : 1962 bytes

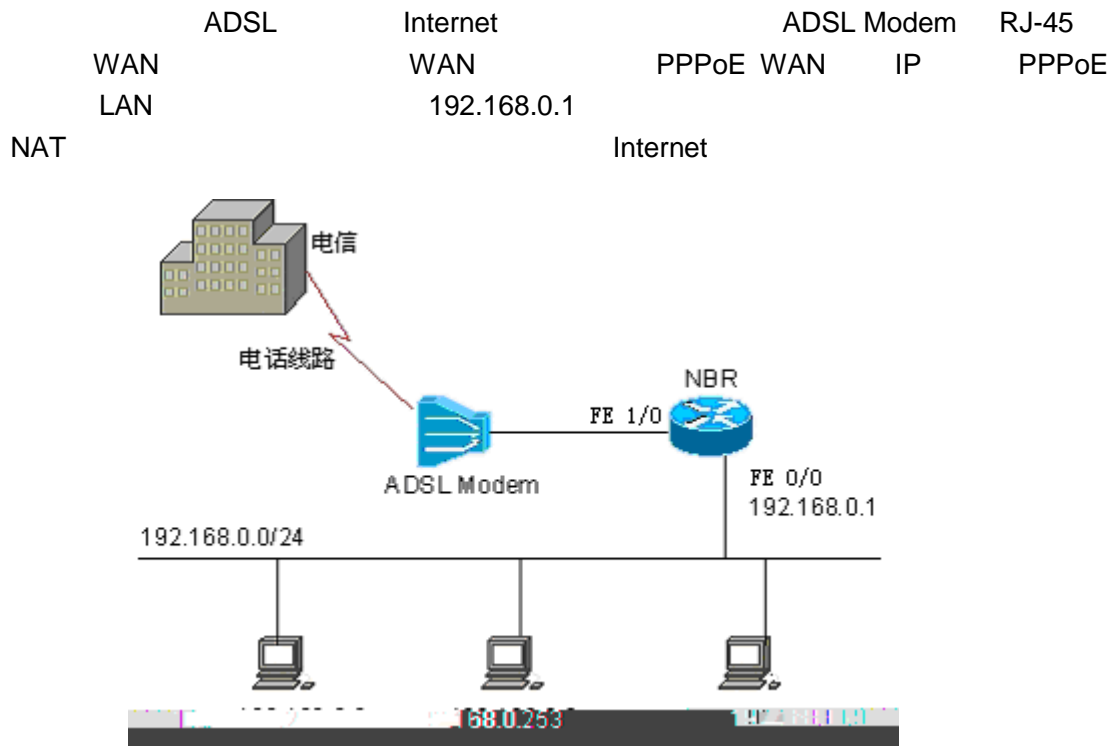
!
version 9.17 (building 9) for NBR
enable password 7 073f07221c1c
!
access-list 3198 deny tcp any any eq 135
access-list 3198 deny tcp any any eq 445
access-list 3198 permit ip any any
access-list 3199 deny icmp any any echo
access-list 3199 deny tcp any any eq 135
access-list 3199 deny tcp any any eq 445
access-list 3199 permit ip any any
access-list 99 permit any
dialer-list 1 protocol ip permit
mirror master lan 0 slave lan 3 all
!
!
!
service sequence-numbers

```

```
service timestamps debug datetime
service timestamps log datetime
no service password-encryption
!
interface FastEthernet 0/0
 ip nat inside
 ip access-group 3198 in
 no ip redirects
 no ip mask-reply
 no ip proxy-arp
 ip address 192.168.0.1 255.255.255.0
 arp gratuitous-send interval 1 5
!
interface FastEthernet 1/0
 ip nat outside
 ip access-group 3199 in
 no ip redirects
 no ip mask-reply
 no ip proxy-arp
 ip address 218.5.19.2 255.255.255.0
 duplex auto
 speed auto
!
interface FastEthernet 1/1
 duplex auto
 speed auto
 shutdown
!
interface Null 0
!
ip nat pool nbr_setup_build_pool prefix-length 24
 address 218.5.19.2 218.5.19.2 match interface FastEthernet 1/0
!
ip nat inside source list 99 pool nbr_setup_build_pool
ip nat translation max-entries 7000
ip nat translation per-user 0.0.0.0 1000
ip nat translation udp-timeout 150
ip nat translation icmp-timeout 30
ip nat translation tcp-timeout 600
ip nat translation finrst-timeout 20
ip nat translation dns-timeout 30
security anti-wan-attack level high
security anti-lan-attack
!
ip route 0.0.0.0 0.0.0.0 FastEthernet 1/0 218.5.19.1
!
line con 0
line vty 0
 login
 password 7 110022081d5e0834012e3e
line vty 1
 login
 password 7 072c06221a062210014f1f
line vty 2
 login
 password 7 093d101f2811175f1e2400
line vty 3
 login
 password 7 050a03330c3b1007340000
line vty 4
 login
 password 7 08112a181d330007590833
```

```
!
!
end
```

4.2 PPPoE



4-2 PPPoE

```
NBR ( NBR1200 )
```

```
!
NBR>enable
!
```

```
NBR#setup
```

```
-----
ctrl-c      '['
```

```
:
```

```
[NBR]:
```

```
telnet
```

```
WAN (1- , 2 - , 3- , ) [1]:
```

```
internet WAN :
```

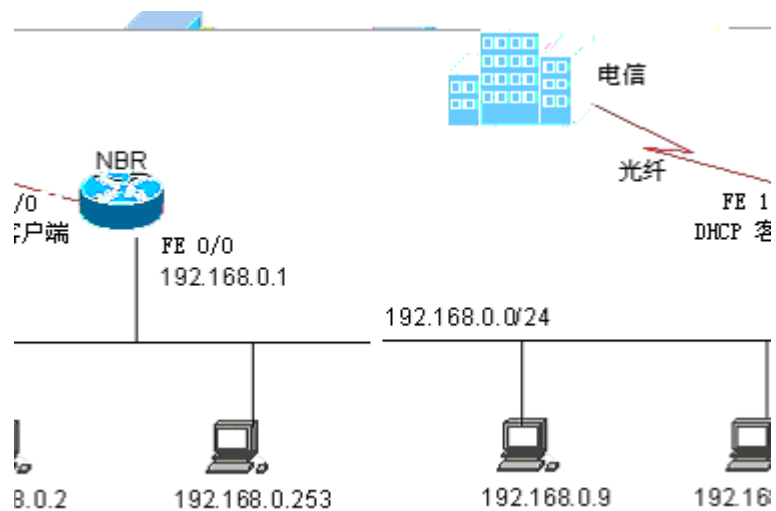
```
0. WAN 0
```

```
1. WAN 1
```

```
(0 - 1)[0]:
```

```
!  
interface Null 0  
!  
!  
ip nat pool nbr_setup_build_pool prefix-length 24  
address interface dialer 0 match interface dialer 0  
!  
ip nat inside source list 99 pool nbr_setup_build_pool  
ip nat translation max-entries 7000  
ip nat translation per-user 0.0.0.0 1000  
ip nat translation udp-timeout 150  
ip nat translation icmp-timeout 30  
ip nat translation tcp-timeout 600  
ip nat translation finrst-timeout 20  
ip nat translation dns-timeout 30  
security anti-wan-attack level high  
security anti-lan-attack  
!  
ip route 0.0.0.0 0.0.0.0 dialer 0  
!  
line con 0  
line vty 0  
login  
password 7 04220b032c  
line vty 1  
login  
password 7 1000012217  
line vty 2  
login  
password 7 08163c1000  
line vty 3  
login  
password 7 072b102a07  
line vty 4  
login  
password 7 050d153b11  
!  
!  
end
```

PC



4-3 DHCP IP

NBR (NBR1200)

```
NBR >enable
!
NBR#setup
```

```
-----
ctrl-c          '[']

:

[NBR]:

telnet
WAN (1- , 2 - , 3- , ) [1]:

internet WAN :
0. WAN 0
1. WAN 1
(0 - 1)[0]:

:
1. IP
2. PPPoE
3. DHCP IP
(1 - 3)[1]:3
ISP Mbps (1-100)[ 100]:
ARP[no]:

: telnet LAN IP
LAN
LAN IP[192.168.0.1]:
LAN [255.255.255.0]:
ARP[yes]:
(1 - 3600)[1]:
```

```

1 (1 -100)[5]:

[no]: NBR

[yes]:
[yes]:

:
1.
2.
3.
(1 - 3)[3]:
[yes]:
WAN ping [no]:
IP [no]:

DNS (DNS ) [no]:

:
:
:admin
telnet :remoteuser

:
WAN 0: DHCP IP.
: 100 Mbps
:
: 192.168.0.1 255.255.255.0
ARP: 1 Seconds
:
:
:
WAN ping :
DNS (DNS ):
[yes]:
NBR#
!
NBR#show running-config
Building configuration...
Current configuration : 1870 bytes

!
version 9.17 (building 9) for NBR
enable password 7 034233150f30

!
access-list 3198 deny tcp any any eq 135
access-list 3198 deny tcp any any eq 445
access-list 3198 permit ip any any
access-list 3199 deny icmp any any echo
access-list 3199 deny tcp any any eq 135
access-list 3199 deny tcp any any eq 445
access-list 3199 permit ip any any

```

```
access-list 99 permit any
dialer-list 1 protocol ip permit
!
service sequence-numbers
service timestamps debug datetime
service timestamps log datetime
no service password-encryption
!
interface FastEthernet 0/0
 ip nat inside
 ip access-group 3198 in
 no ip redirects
 no ip mask-reply
 no ip proxy-arp
 ip address 192.168.0.1 255.255.255.0
 arp gratuitous-send interval 1 5
!
interface FastEthernet 1/0
 ip nat outside
 ip access-group 3199 in
 no ip redirects
 no ip mask-reply
 no ip proxy-arp
 ip address dhcp
 duplex auto
 speed auto
!
interface FastEthernet 1/1
 duplex auto
 speed auto
 shutdown
!
interface Null 0
!
!
ip nat pool nbr_setup_build_pool prefix-length 24
 address interface FastEthernet 1/0 match interface FastEthernet 1/0
!
```

```
security anti-wan-attack level high
security anti-lan-attack
!
!
line con 0
line vty 0
  login
  password 7 131717470235173e3f0057
line vty 1
  login
  password 7 04251d0b31172a00012217
line vty 2
  login
  password 7 0132464e380c032b102a07
line vty 3
  login
  password 7 08112a181d330007590833
line vty 4
  login
  password 7 03513215092a063a061735
!
!
end
```

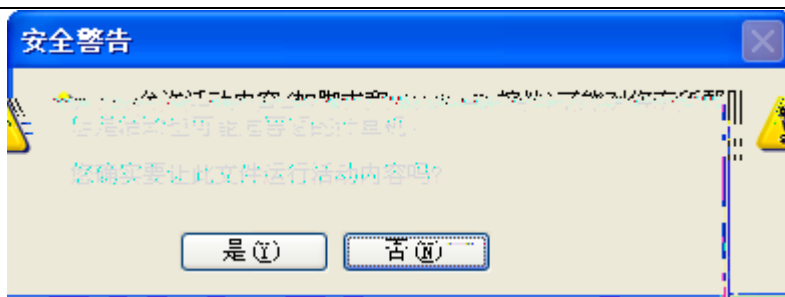
5. Web

Web

CD-ROM

5.1 Web

LAN WAN IP



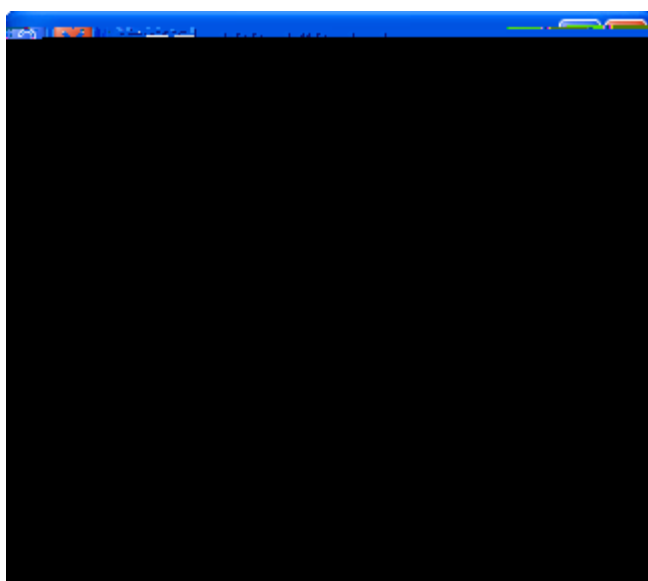
5-2

(Y)

WEB

WEB

admin



5-3

web

flash

web

htm js

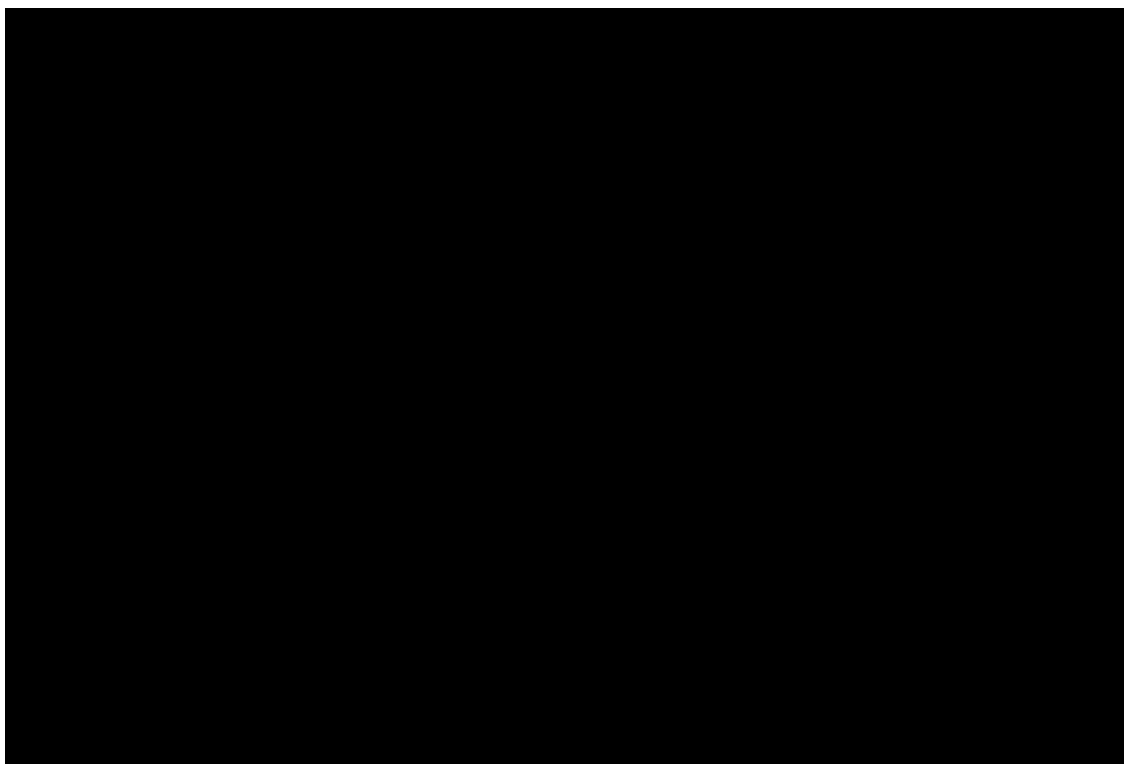
Web

WED

5.2

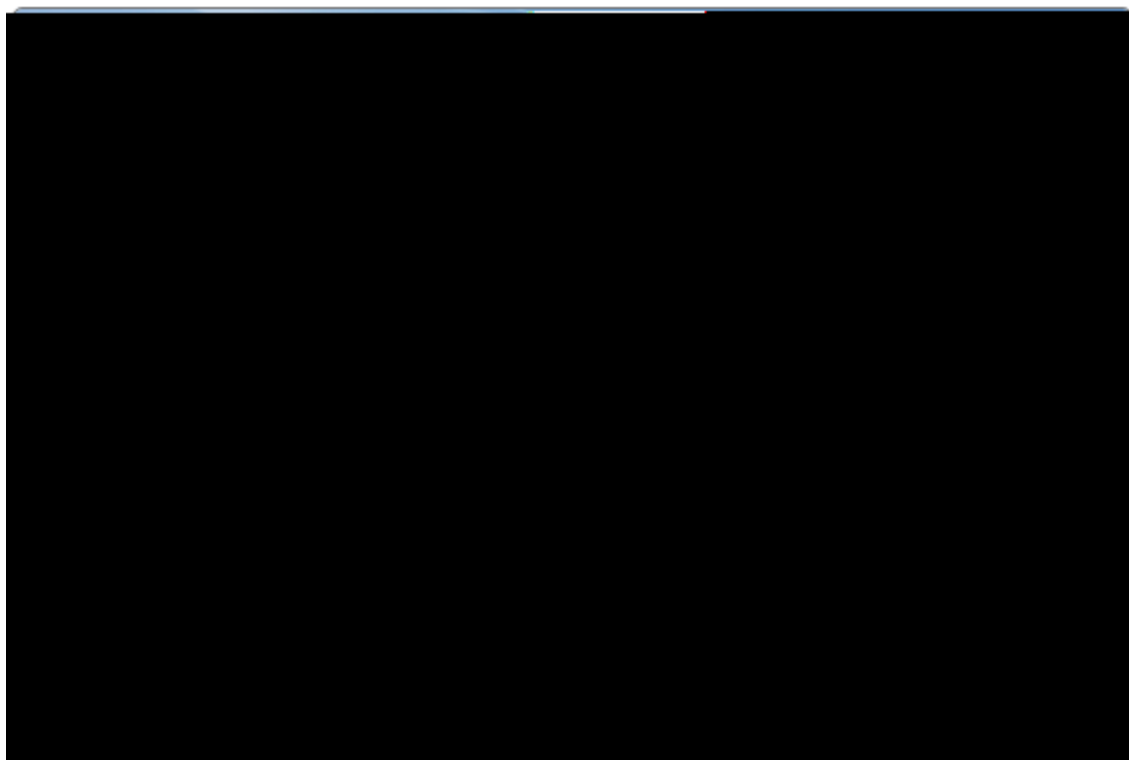
NBR

NBR



5-4

LAN



5-5 LAN

LAN IP LAN IP WAN IP Web



5-7 WAN0 IP

PPPoE



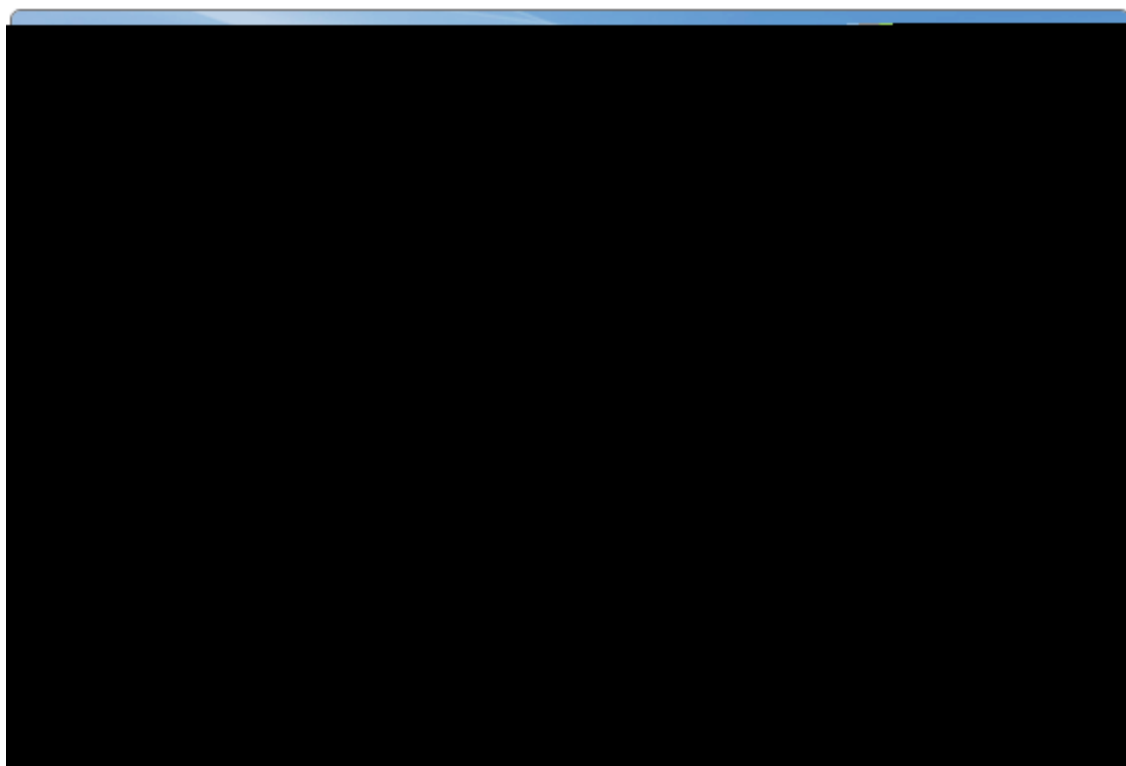
5-8

ADSL

1-1000M

WAN0

WAN0



5-9 WAN0 PPPoE

WAN0

WAN1

(wan1)

LAN IP

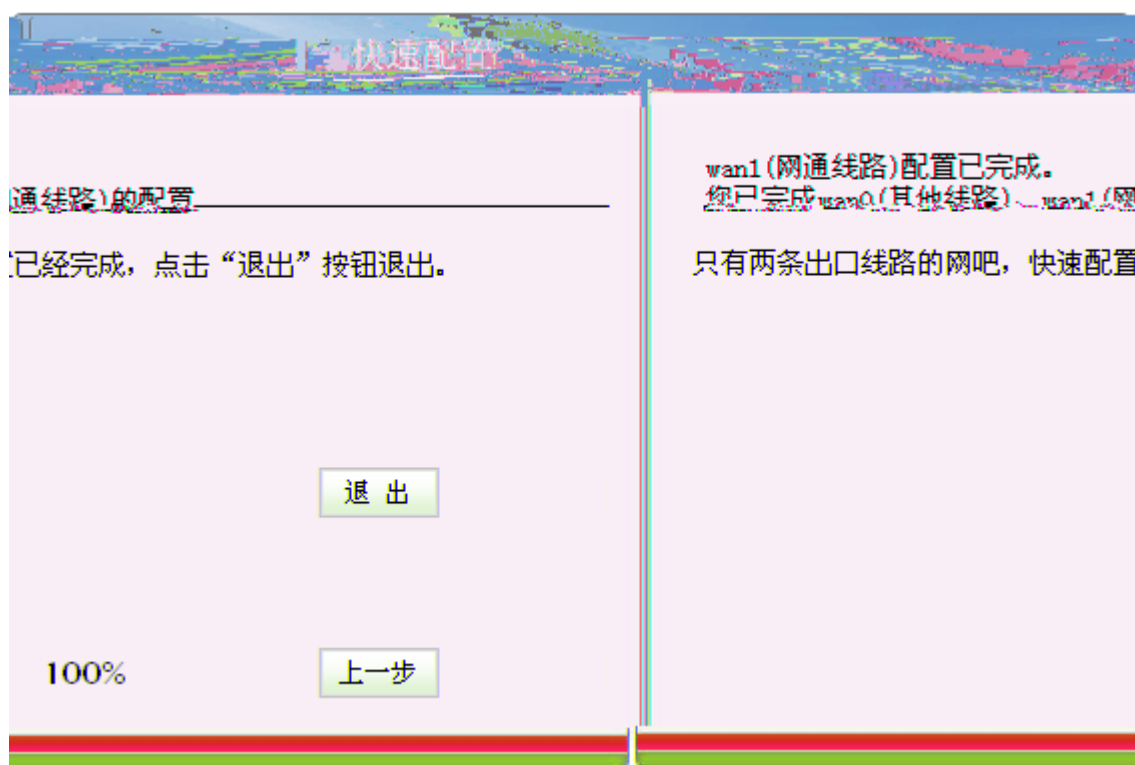
IP

Web

WAN WAN1

WAN

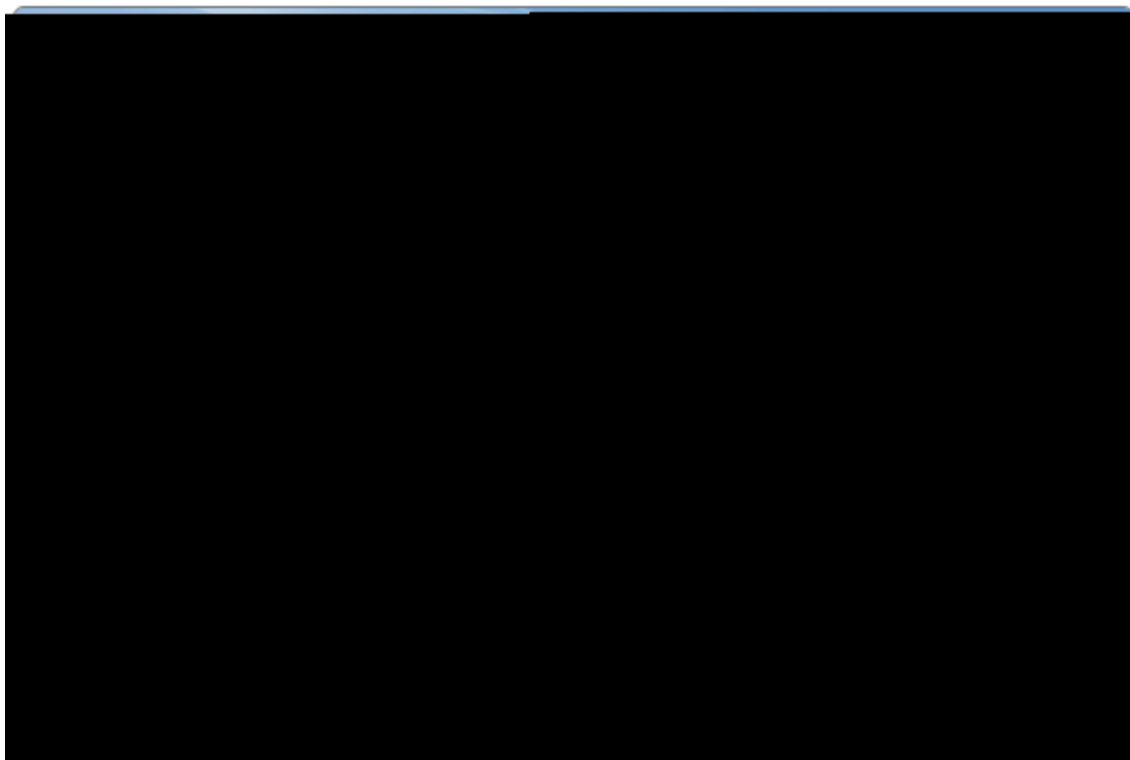
WAN



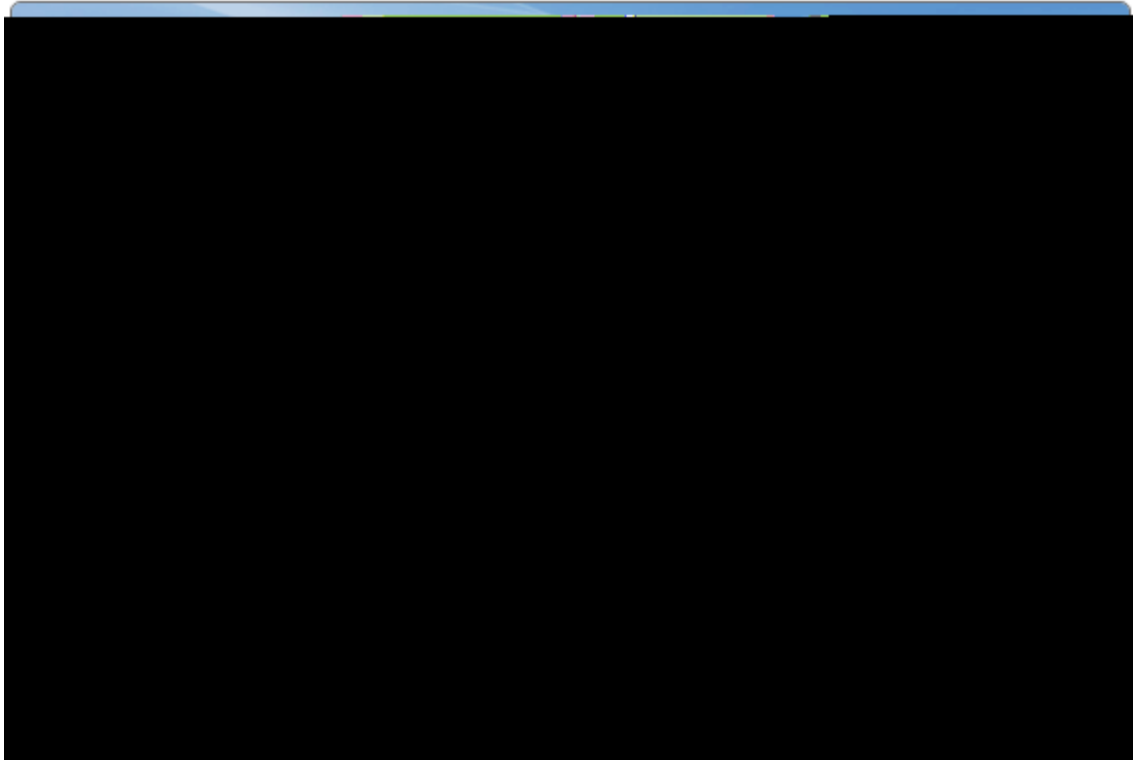
5-10 WAN

WAN

WAN



5-11



5-12

LAN IP

IP

Web

6. NBR

NBR

NBR

NBR

3

4

GB50174-93

4

4

5

6.2

6.2.1

IN OUT

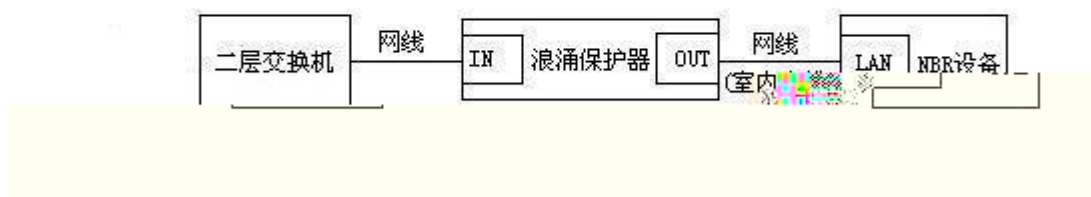
1 WAN



6-1 WAN

- i. ADSL Modem NBR ADSL Modem
 IN NBR WAN OUT
- ii.
- iii.
- iv. ADSL Modem NBR

2 LAN



6-2