



**RG-NBR300**

©2009

RGOS RGNOS®

®



NBR NBR80, NBR300, NBR1100, NBR1200, NBR2000,  
NBR2500 NBR3000

NBR



Z

NBR

Z

Z

Z

Z

LED

Z

DHCP

NAT IP

PPPoE

Z

NBR

---

NBR

RG-NBRxxx

NBRxxx

---

z  
z  
z

**1**

5

Terminal Display  
8.5

Terminal Display

Courier New

2

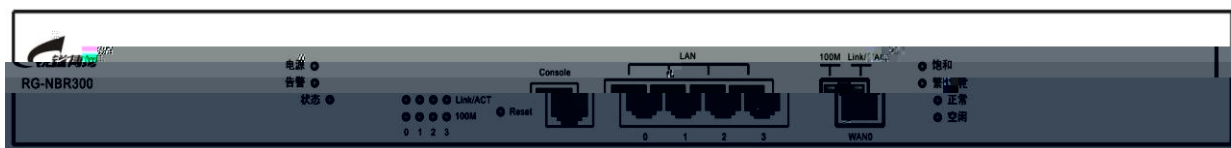
		.....	1
1.1	NBR	.....	1
1.1.1	NBR300	.....	1
1.2		.....	2
1.2.1		.....	2
1.2.2		.....	3
1.2.3		.....	3
1.2.4		.....	3
1.2.5		.....	3
1.3		.....	3
		.....	7
2.1		.....	7
2.2		.....	7
2.2.1	/	.....	7
2.2.2		.....	8
2.2.3		.....	8
2.2.4		.....	9
2.2.5		.....	9
2.2.6		.....	10
2.2.7		.....	11
2.3		.....	12
		.....	13
3.1		.....	13
3.2		.....	13
3.2.1		.....	13
3.2.2		.....	14
3.3		.....	14
3.4		.....	14
3.5		.....	15
		.....	16
4.1		.....	16
4.1.1		.....	16
4.1.2		.....	16
4.1.3		.....	19
4.1.4		.....	19
4.1.5	Setup	.....	21
4.2	Web	.....	23
4.3	Web	.....	24

NBR

## 1.1 NBR

### 1.1.1 NBR300

#### 1.1.1.1 NBR300



1-1 NBR300



1-2 NBR300

#### 1.1.1.2 NBR300

NBR300

	SDRAM 64MB
	FLASH 8MB
I/O	WAN 1 10/100M
	LAN 4 10/100M
	1
	10Base-T/100Base-TX
	RS-232
( × × )	44.4mm× 437mm× 210mm

	200-240V~;50Hz
	20W
	0~45
	10~90%

SDRAM

FLASH

**1.1.1.3 NBR300**

	NBR
LINK/ACT	
100M	100M 10M
Reset	5 5
CPU	

**1.2**

**1.2.1**

- z RJ45 ARP
- z TCP/IP IP ICMP IGMP TCP UDP
- z IP RIP(V1/V2)
- z SNMP
- z TELNET
- z DHCP Relay
- z PPPoE
- z X-MODEM
- z NAT
- z TFTP

## 1.2.2

z  
z

## 1.2.3

z  
z  
z  
z Console  
z TELNET  
z TFTP

## 1.2.4

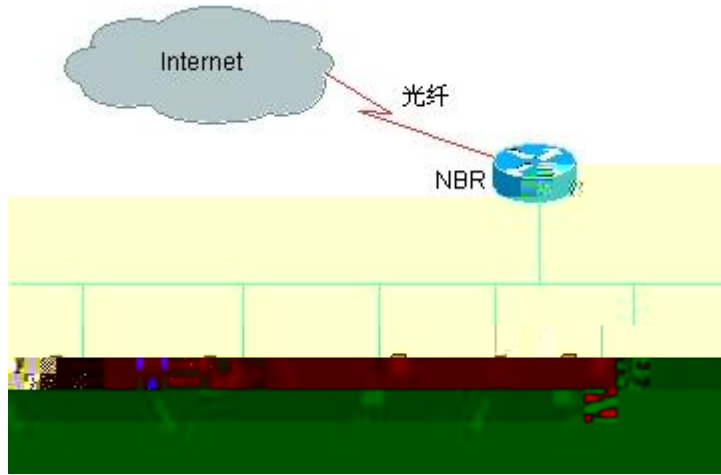
z IP  
z PPP PAP CHAP  
z MAC  
z NAT

## 1.2.5

z X-MODEM ( Windows 95 Windows NT  
z UNIX DOS ) Console  
z TFTP  
z BOOTROM

## 1.3

z **NBR**  
NBR NBR80,NBR200,NBR1000E



1-15 NBR

1

NBR

Internet

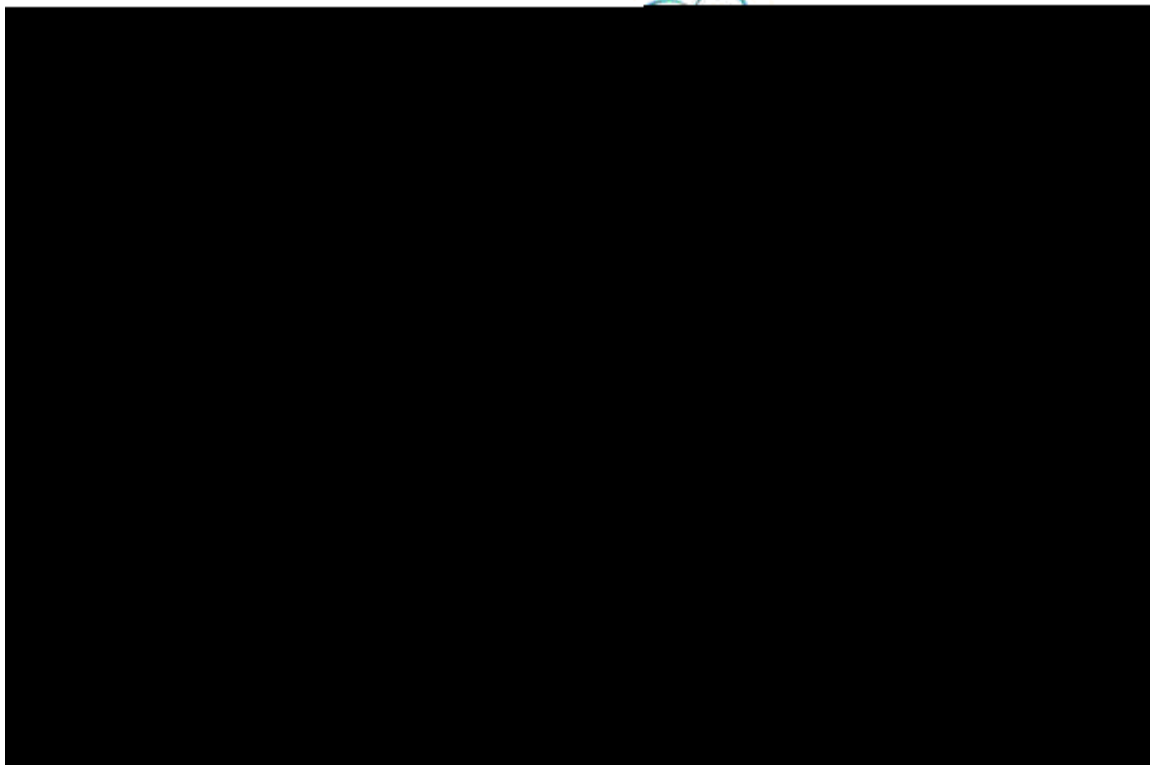
1

2

3

DDOS

Z



1-16 NBR

2

1000M

100M

200

2

3

2

NBR2000

2

3

3

3

3

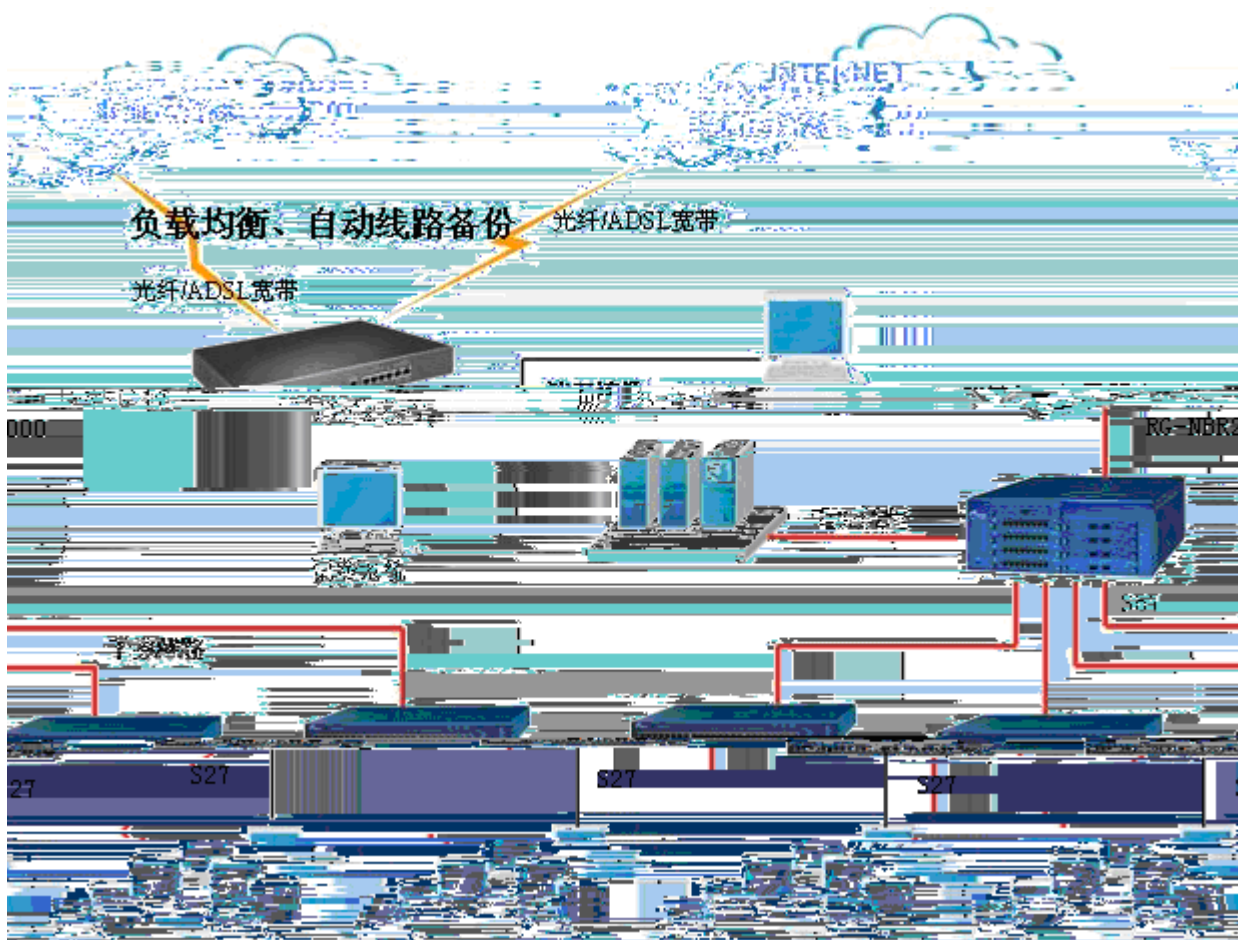
3

4

301

<http://www.ruijie.com.cn>

- 1
- 2 100M
- 3
- 4 DDOS
- Z



1-17 NBR

3

NBR2000

1000M

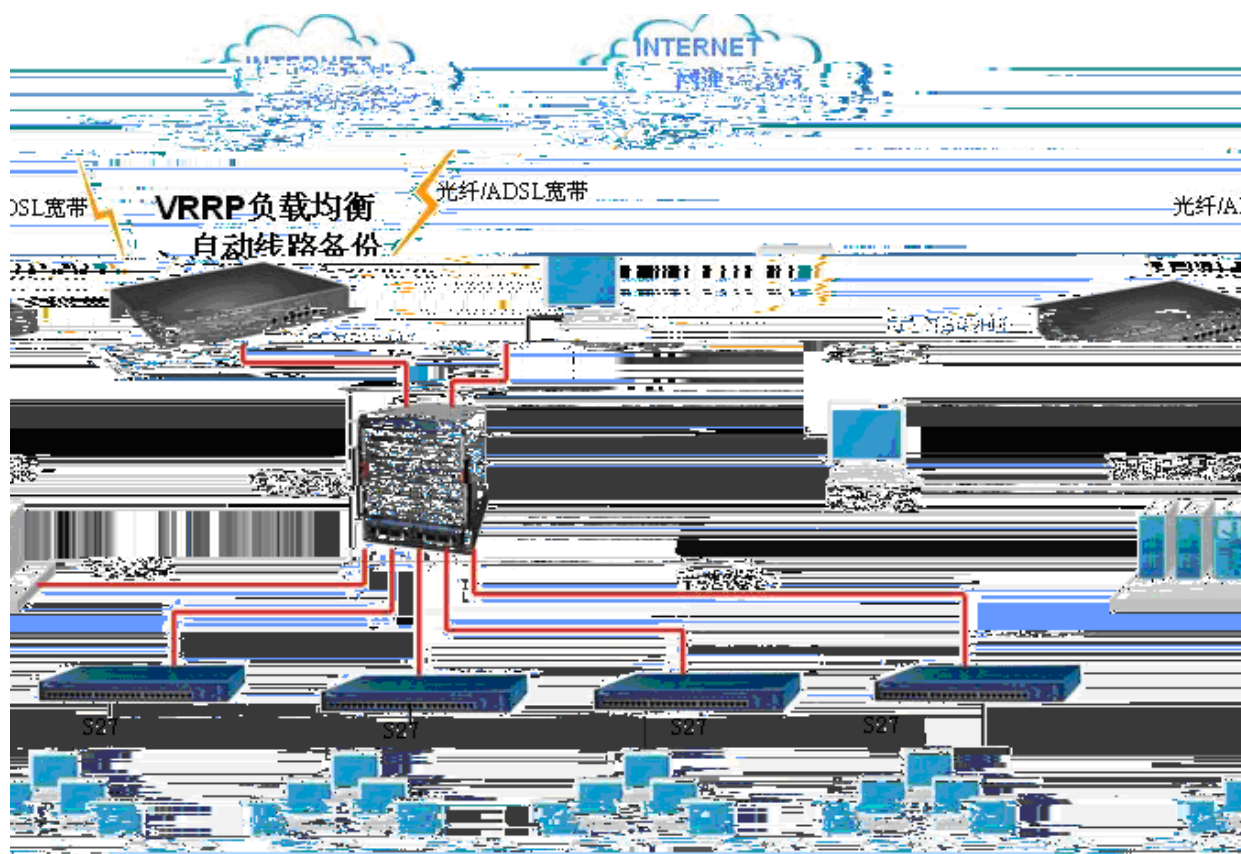
3

3

3

NBR2000

- 1 3
- 2
- 3
- 4
- 5 DDOS
- Z



1-18 NBR

4

400

S65

## 2.1

---

0.4m			1.5m
	48	15	
			5

## 2.2.2

( $\mu$ m)	0.5	1	3	5
( )	$1.4 \times 10^7$	$7 \times 10^5$	$2.4 \times 10^5$	$1.3 \times 10^5$

NBR

---

Z  
Z  
Z  
Z

## 2.2.4

Z  
Z  
Z  
Z

## 2.2.5

NBR

NBR

### 2.2.5.1 WAN

WAN      ADSL Modem  
10/100M      WAN      10/100M      1000M WAN      ADSL Modem  
10/100M  
WAN

### 2.2.5.2 LAN

LAN  
10/100M      LAN      10/100M      1000M      LAN

### 2.2.5.3

1

GB50174-93      IEC 61312-2      GB50057-94

2

GB50057-94

LPZ0 LPZ1

IEC

LPZ1 LPZ2

LPZ2 LPZ3

3

4

GB50174-93

4



## 2.3

z

z

z

z

z

z

z

z

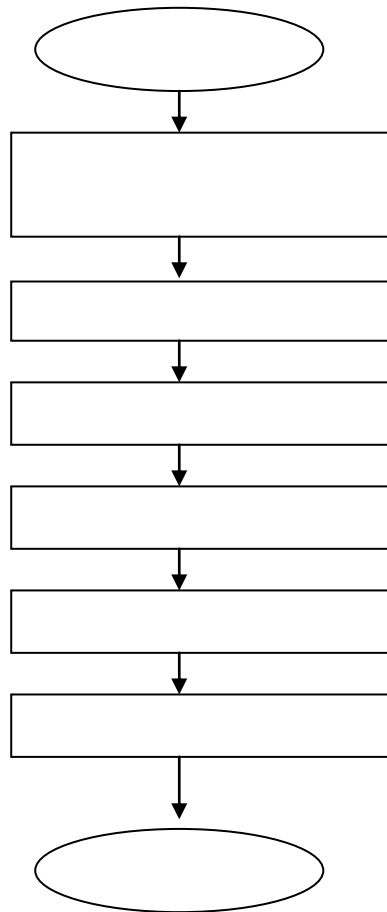
z

z HUB

z ( Windows PC)

z

### 3.1



### 3.2

z  
z

#### 3.2.1

### 3.2.2

Z

Z

Z

10cm

DB-9 Ä DB-25

NBR

NBR

NBR

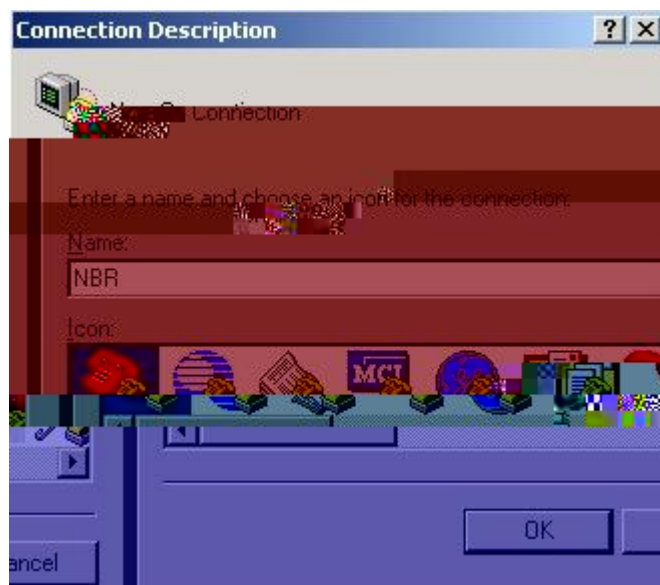
NBR

## 4.1

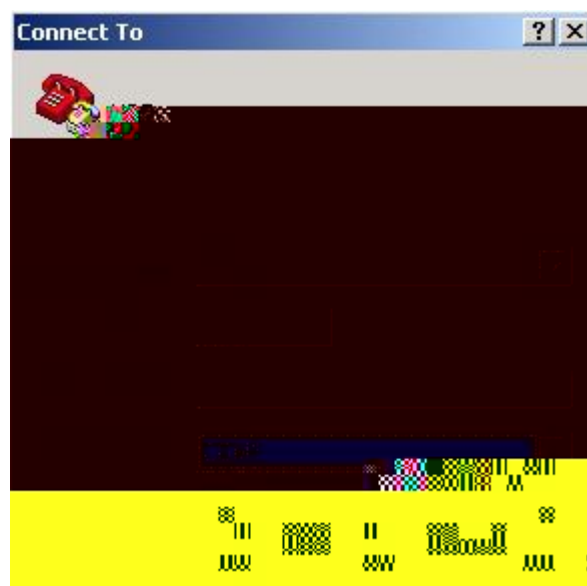
### 4.1.1

NBR

IP

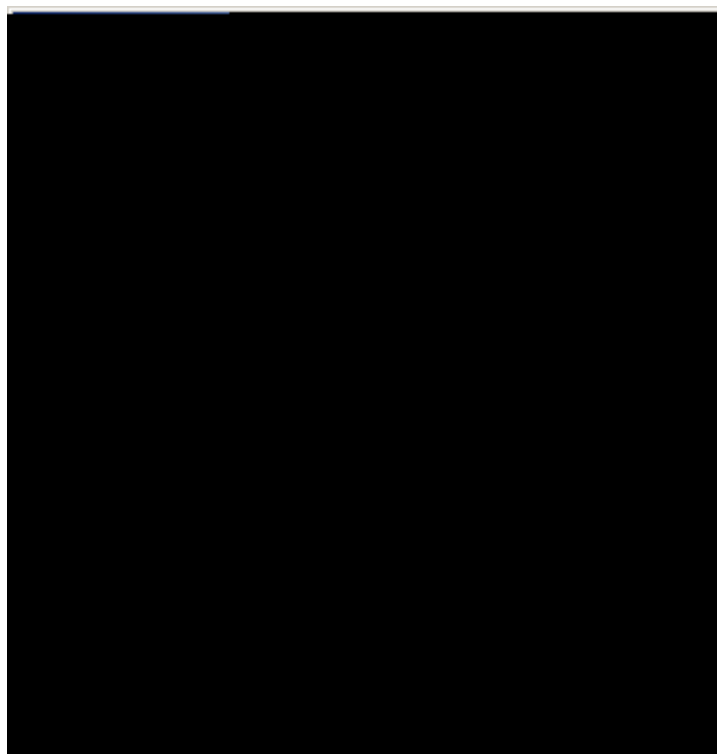


4- 2

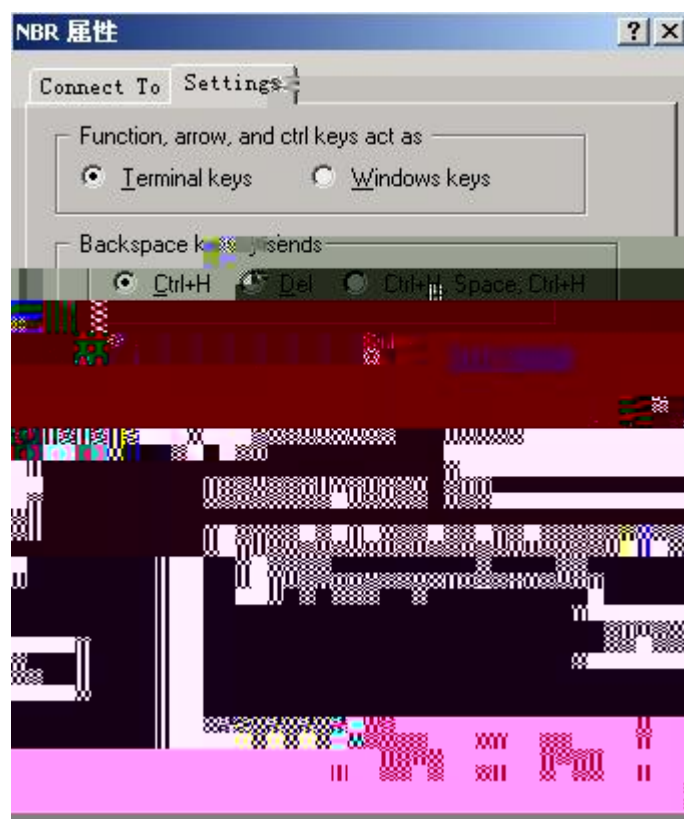


4- 3

Console



4- 4



4- 5

### **4.1.3**

#### **4.1.3.1**

z

z

z

#### **4.1.3.2**

```
!!!!!!!!!!!!!!!!!!!!!!!!!!!!!!!!!!!!!!!!!!!!!!!!!!!!!!!!!!!!!!!!!!!!!!!!!!!!  
!!!!!!!!!!!!!!!!!!!!!!!!!!!!!!!!!!!!!!!!!!!!!!!!!!!!!!!!!!!!!!!!!!!!!!!!!!!!  
Red-Giant Operating System Software  
RGOS (tm) RELEASE SOFTWARE, Version 9.15 building 6
```

## 4.1.5 Setup

```

setup
WAN1      PPPoE
NBR#

-----

ctrl-c      '[]'

:

:aaa      :nbr

telnet      :bbb

internet WAN :
0. WAN 0
1. WAN 1
   (0 - 1):0

:
1. IP
2. PPPoE
3. DHCP IP
   (1 - 2):1
WAN IP:202.101.1.1
WAN      :255.255.255.0
IP      :202.101.1.254
ISP      [no]:yes
         :202.101.1.1
         :202.101.1.3
WAN      [yes]:

(1. DNS ;2. ping ):1
IP      :202.101.98.55
ISP      Kbits (1-1000000):10000

WAN [no]:yes

internet WAN :
0. WAN 0
1. WAN 1
   (0 - 1):1

:
1. IP

```

```

2. PPPoE
3. DHCP IP
   (1 - 2):2
   PPPoE :user
   PPPoE :user
   ISP Kbits (1-1000000):500

   WAN [no]:

: telnet LAN IP
LAN LAN

LAN [no]:

[no]:

(LAN):
(0 - 3):

(LAN):
(0 - 3) ', ' :

:
0.
1.
2.
(0 - 2):

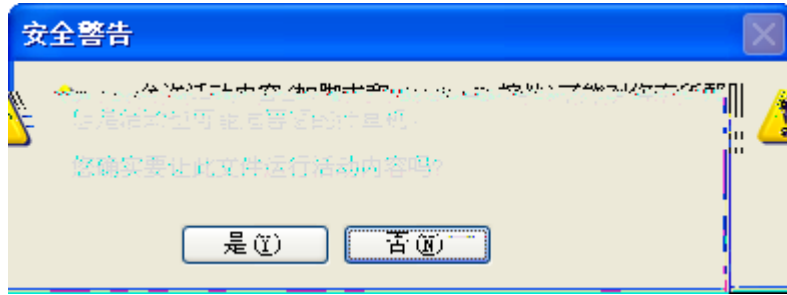
[yes]:
WAN ping [yes]:

:
:nbr
:aaa
telnet :bbb
:
WAN 0: IP
: 202.101.1.1 255.255.255.0
:202.101.1.254
NAT :202.101.1.1 202.101.1.3
: DNS 202.101.98.55
: 10000 Kbits
WAN 1: PPPoE
:user
:user
: 500 Kbits
:
: LAN0 : LAN3
:
WAN ping :

[yes]:

```





4-7 " (Y)"

" WEB

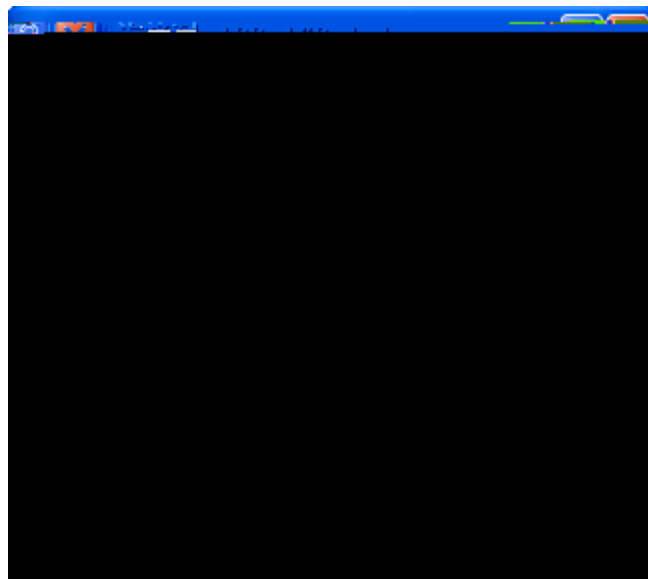
" "

"

WEB

admin

admin



4-8

js web flash web htm

" " " WED  
" Web

### 4.3 Web

web WEB  
.doc