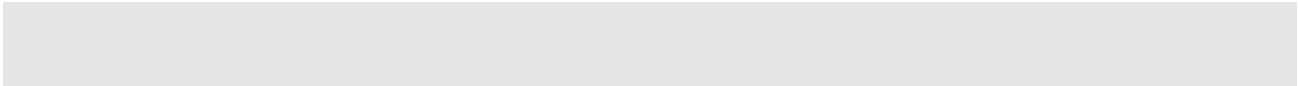




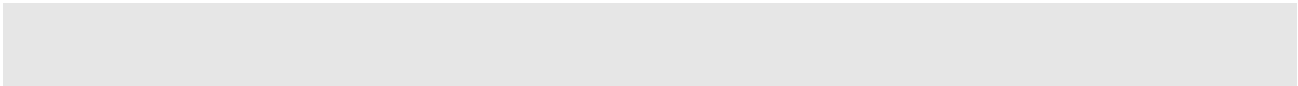
P-780

©2008





,
,
,



Arial

[] []

{ x|y|... }

[x|y|...]

//

1.



2.



3.

a

Enter a

" "

1+ 2
" Alt" " A"

Ctrl+Alt+A " Ctrl"

1 2

Alt F Alt

F

1	3
1.1	3
1.2	3
1.3	BSSID	4
1.4	4
2	5
2.1	Super Brige	5
2.2	Super AP	5
2.2.1	5
2.2.2	Multiple BSSID (32 BSSID)	5
2.2.3	AAA.....	6
2.2.4	6
2.2.5	6
3	7
3.1	FCC	7
3.2	IC	8
4	9
4.1	AP + Bridge	9
4.2	AP + AP	9
4.3	Bridge+ Bridge	10
5	11
5.1	11

6.2.3	Wireless	22
6.2.4	System.....	22
6.3	Status	23
6.3.1	Status Device Status.....	23
6.3.2	Status Wireless Status	23
6.4	Network	25
6.4.1	Network Interface	25
6.4.2	Network RADIUS Servers.....	27
6.4.3	Network DHCP Settings	28
6.4.4	Network NTP Settings	32
6.4.5	Network Time Settings.....	35
6.5	Wireless	35
6.5.1	Wireless Basic.....	35
6.5.2	Wireless Advance.....	43
6.5.3	Wireless WEP	49
6.5.4	Wireless MAC ACL.....	50
6.6	System	53
6.6.1	System Security	53
6.6.2	System SNMP.....	53
6.6.3	System Telnet.....	55
6.6.4	System Configuration	55
6.6.5	System Reset.....	57
6.6.6	System Upgrade.....	58
7	59
7.1	59
7.2	RG-P-780	60
7.3	...308.....11.1.455.....542DC	0 10

1

RG-P-780

5GHz 2.4GHz



1.3

BSSID

32	BSSID	BSSID		BSSID	
SSID			RADIUS	VLAN ID	BSSID
	802.1p tag	802.11e	EDCA		

2

2.1 Super Brige

- 802.11a/b/g
- 108Mbps
- 20
- RF
- WPA/PSK

2.2 Super AP

2.2.1

- DCA Dynamic Channel Allocation

2.2.2 Multiple BSSID (32 BSSID)

- BSSID SSID
- BSSID SSID
- BSSID AAA 802.1x web
- 802.1x Web
- BSSID
- WPA
- BSSID RADIUS
- BSSID



2.2.3 AAA

- RADIUS
- 802.1x EAP/TLS EAP/TTLS EAP/PEAP EAP/SIM

2.2.4

- 64/128 WEP
- WPA/TKIP WPA/AES
- MAC ACL

3



48

MSS


5.15 } 5.25GHz
u

5GHz

34

3.1 FCC

5.15 5.25GHz

 RG-P-780 2.4GHz
1 11 u

3.2 IC

Industry Canada

50

EIRP

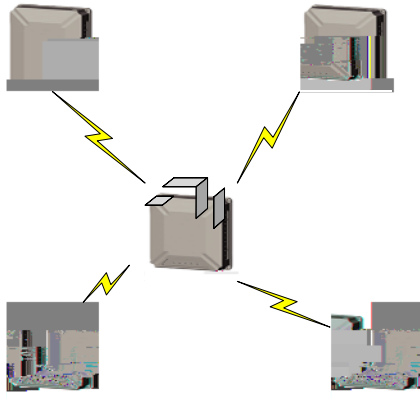
5250-5350 MHz

RG-P-780

4.3 Bridge+ Bridge

Bridge + Bridge

11a Bridge + 11a Bridge



5.2

5.2.1



RG-P-780

3

RG-P-780

Reset

RG-P-780

Reset 5

Reset 5 u

5.2.2

RG-P-780

RG-P-780

LAN	RJ45	
Reset		M5

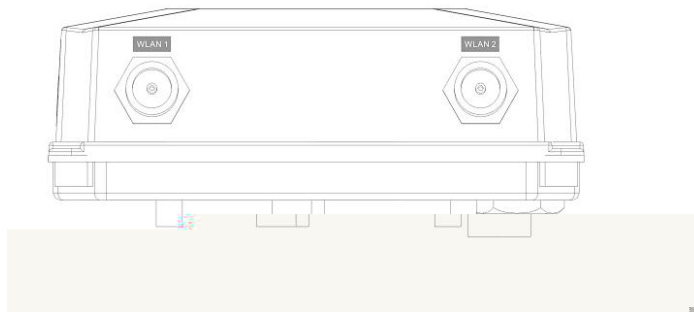
5.2.3 LEDs

RG-P-780 3

	LED		
1	LAN		RG-P-780
			RG-P-780
2	WLAN1		RG-P-780 WLAN1
			RG-P-780 WLAN1
3	WLAN2		RG-P-780 WLAN2
			RG-P-780 WLAN2

5.2.4 RF

RG-P-780 N RF



1	WLAN1	WLAN1
2	WLAN2	WLAN2

5.3

5.3.1 RG-P-780

RG-P-780

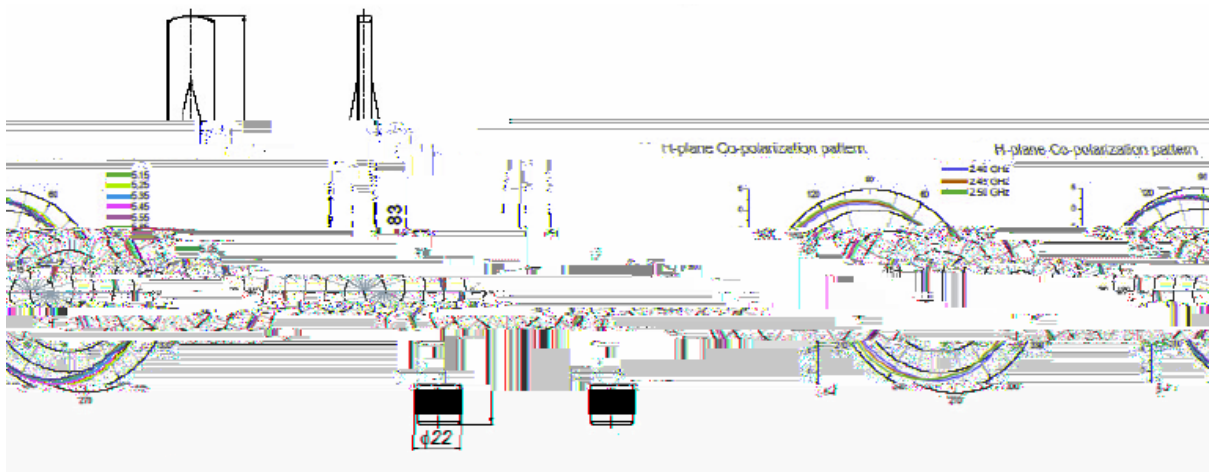
IEEE802.3af POE RG-E-120 RG-P-780 u

1. RG-P-780

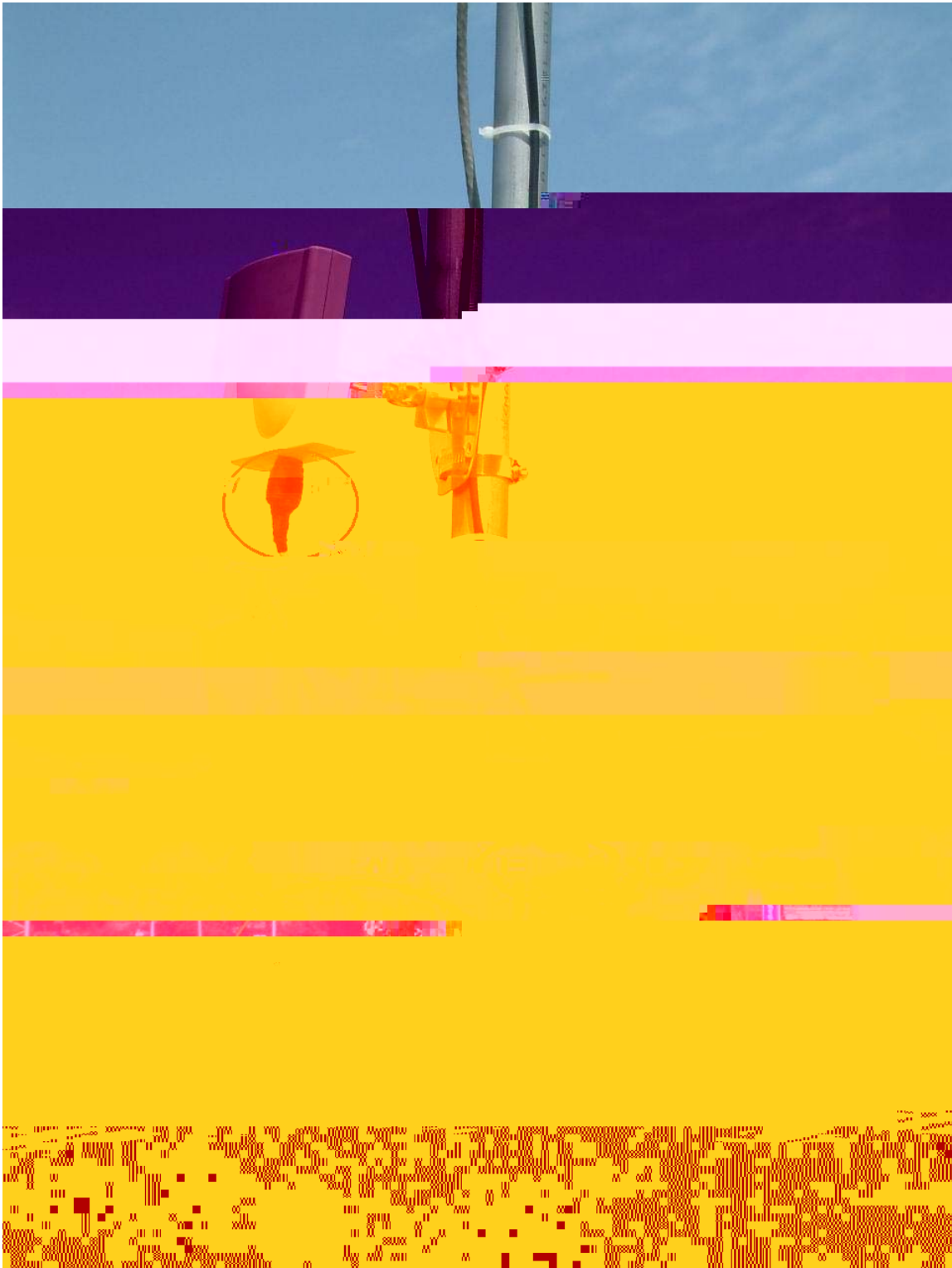


Bridge	20 bridge link
LAN	10/100Mb RJ-45
WLAN1	N
WLAN2	N
	HTTPs Telnet SSHv2 SNMP
	HTTPs
	/
	180 mm x 160 mm x 58 mm
	1.5kg

Electrical Specification		Electrical specification	
Frequency range	2.400 GHz ~ 2.483 GHz	Frequency range	2.400 GHz ~ 2.483 GHz
Gain	17.0 dBi	Peak gain	14.3 dBi
Gain @ 2.45 GHz	5.0 dBi	Average gain	2.0 dBi
VSWR	2.0 : 1 Max.		
Polarization	Linear, vortical		
Power handling	2 W (cw)	Power handling	2 W (cw)
Impedance	50 Ohms	Impedance	50 Ohms
Connector	RP-N plug	Connector	RP-N plug
Color	Gray	Color	Gray
Weight	70 g	Weight	70 g



5.6



6 Web

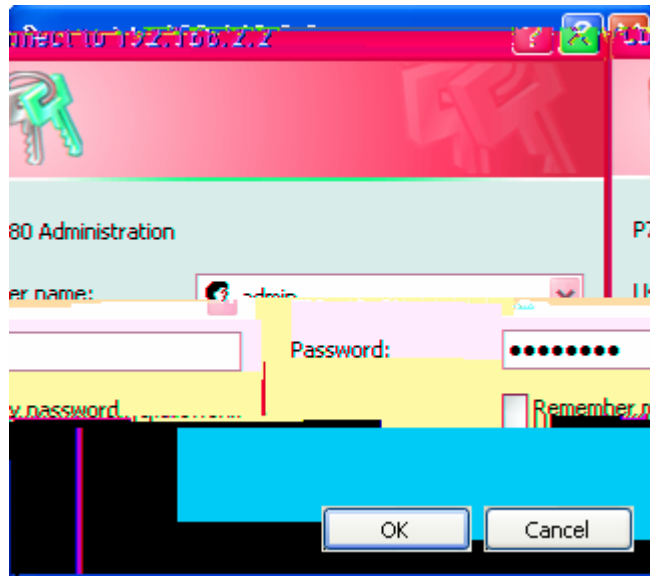
6.1 Web

Web RG-P-780

1. IP RG-P-780
P-780 IP

<https://192.168.2.2/a.rg>





3. RG-P-780 Web



Web

- **Status** –
- **Network** –
- **Wireless** – RG-P-780
- **System** – RG-P-780
- **Exit** – exit web web

6.2 Web

6.2.1 Status

- **Device Status** –
- **Wireless Status** –

6.2.2 Network

- **Interface** – RG-P-780 LAN Bridge TCP/IP
- **RADIUS Server** – 802.1x WPA RADIUS
- **DHCP Settings**– DHCP server DHCP relay
- **NTP Settings** – NTP
- **Time Settings** –

6.2.3 Wireless

- **Basic** –
- **Advance** –Mutiple BSSID Bridge
- **WEP** – WEP WEP
- **MAC ACL** – RG-P-780 MAC ACL

6.2.4 System

- **Security** – RG-P-780
- **SNMP** – SNMP
- **Telnet** – Telnet/SSH
- **Configuration** –
RG-P-780
- **Reset** –
- **Update** –

u

6.3 Status

6.3.1 Status | Device Status

Device Status RG-P-780

System	
System Version	P-780.WHT.2.26.3428
Uptime	0 day(s) 00:00
System Time	2021/04/01/ 01:15
Wlan1	

System Version AP

firmware

u

Uptime – [day(s) hours:minutes]

System Time – RG-P-780

Wlan1 MAC / Wlan 2 MAC – RG-P-780 MAC

Free System Memory –

Total System Memory – RG-P-780

LAN Mode – RG-P-780 IP IP DHCP IP

LAN IP – RG-P-780 IP

LAN Mask – RG-P-780

Gateway – RG-P-780

6.3.2 Status | Wireless Status

Wireless Status RG-P-780

Radio1		
Channel	11	
Domain	WORLD	
Mode	AP	
Band	2.4GHz(Mixed 11g)	
Layer2 Isolation	disabled	
Total Connected Clients	0	
Antenna Gain	4dBi	
	Total Output Power(EIRP)	14dBm
	MAC ACL	disabled
Radio2		
Channel	60	
Domain	WORLD	
Mode	AP	
Band	5GHz(11a)	
Layer2 Isolation	disabled	
Total Connected Clients	0	
Antenna Gain	7dBi	
	Total Output Power(EIRP)	17dBm
	MAC ACL	disabled
Note:		

- **Radio1 / Radio2** –
 - **Channel** –
 - **Domain** – RG-P-780 regulatory domain
 - **Mode** – AP Bridge
 - **Band** –
 - **Layer2 Isolation** – 2
 - **Total Connected Clients** –
 - **Antenna Gain** – RG-P-780 A-807
2.4GHz 4dBi 5GHz 7dBi
0dBi
 - **Total Output Power (EIRP)** – RG-P-780 EIRP
- $$EIRP = \text{Antenna Gain} + RF$$
- **MAC ACL** – MAC ACL



6.4 Network

Apply Changes – Interface

Discard Changes –

Apply Changes

RG-P-780

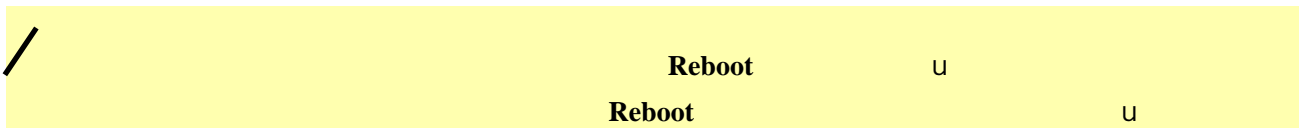
Network Interface Configuration				
IP Address	Netmask	Gateway Address	Protocol	Action
192.168.123.73	255.255.255.0	192.168.123.1	static	Edit

Note:

[Reboot](#)

Server needs to be restarted. Please reboot.

Reboot – RG-P-780



Reboot

Status	Network	Wireless	System
System Is Rebooting Now. Please Wait			
Note:			

6.4.2 Network | RADIUS Servers

RADIUS servers

32

RADIUS Serveru

RADIUS

RADIUS Server				
Name	ServerIP	ServerPort	Secret	Action
Note:				

Add – RADIUS

Add RADIUS

RADIUS Server			
Name	ServerIP	ServerPort	Secret
<input type="text" value="profile1"/>	<input type="text" value="192.168.123.152"/>	<input type="text" value="1812"/>	<input type="text" value="test"/>
<input type="button" value="Save"/>		<input type="button" value="Cancel"/>	
Note:			

Name – RADIUS

Server IP – RADIUS IP []

Server Port – RADIUS [1-65535]

RFC 2138 , Remote Authentication Dial-in User Service RADIUS ...
RADIUS 1812u

Secret –

DHCP Settings	
Name	Value
Status	Disabled

[Edit](#)

Note:

Edit –

DHCP server Edit DHCP relay DHCP

DHCP Settings	
Name	Value
Status	Disabled

Status – DHCP

Disabled – DHCP

DHCP Server – DHCP Server

DHCP Relay – DHCP Relay

DHCP Server

DHCP Server
IP DHCP

DHCP Settings	
Name	Value
Status	DHCP Server
IP Address from	192.168.123.2
IP Address to	192.168.123.254
Netmask	255.255.255.0
Gateway	192.168.123.1
WINS Address	0.0.0.0
lease time(seconds)	864000
Domain	
DNS Address	0.0.0.0
DNS Secondary Address	0.0.0.0

[Save](#) [Cancel](#)

Note:



/ RG-P-780 DHCP serveru

IP Address from / IP Address to – DHCP server IP

DHCP Settings	
Name	Value
Status	DHCP Server
IP Address from	192.168.123.2
IP Address to	192.168.123.254
Netmask	255.255.255.0
Gateway	192.168.123.1
WTNS Address	0.0.0.0
lease time(seconds)	864000
Domain	
DNS Address	0.0.0.0
DNS Secondary Address	0.0.0.0
	Edit

Note:

[Reboot](#)

Server needs to be restarted. Please reboot.

Reboot – RG-P-780

/	Reboot	U
	Reboot	U
⚡	RG-P-780	DHCP IP DHCP server U

RG-P-780 DHCP IP

Warning: DHCP server and DHCP relay cannot be set when AP as a DHCP client itself.

DHCP Settings	
Name	Value
Status	Disabled

Note:

DHCP Relay

Server IP – DHCP IP

DHCP Relay DHCP u

Save

DHCP Settings	
Name	Value
Status	DHCP Relay
Server IP	192.168.2.1
	Edit
Apply Changes Discard Changes	
Note:	

Web

RG-P-780

Apply Changes

Reboot – RG-P-780

Reboot u

Reboot u

RG-P-780 DHCP IP DHCP relay u

6.4.4 Network | NTP Settings

NTP Network Time protocol

NTP

Network| NTP Settings

NTP

NTP Server		
Ntp Status:	enable	
Time Zone:	GMT+08:00	
Name	ServerIP	Action
Ntpserver-1	107.46.103.100	<input type="button" value="Delete"/> <input type="button" value="Edit"/>
<input type="button" value="Add"/>		
Note:		

- **NTP status** – NTP
 - **Time Zone** – NTP
 - **Delete** – NTP
 - **Edit** – NTP
 - **Add** – NTP
- Add** NTP

NTP Server		
Name	ServerIP	Action
	207.46.103.100	Ntpserver-1
<input type="button" value="Save"/> <input type="button" value="Cancel"/>		
Note:		

RG-P-780 NTP NTP IP u

Save

NTP Server			
Ntp Status:	disable		
Time Zone:	GMT-12:00		
ServerIP	Action	Name	
207.46.103.100	<input type="button" value="Delete"/> <input type="button" value="Edit"/>	Ntpserver-1	
<input type="button" value="Add"/>			
<input type="button" value="Apply Changes"/> <input type="button" value="Discard Changes"/>			
Note:			



NTP Server

Ntp Status:

Time Zone:

Name	ServerIP	Action
Ntpserver-1	207.46.103.100	<input type="button" value="Delete"/> <input type="button" value="Edit"/>

Note:

Save

NTP Server

Ntp Status:

Time Zone:

Action	Name	ServerIP
<input type="button" value="Delete"/> <input type="button" value="Edit"/>	Ntpserver-1	107.46.103.100

Note:

Web

RG-P-780

Apply Changes

6.4.5 Network | Time Settings

Network | Time Settings

Date Configuration	
Date	2005/07/19
Time	13:51
<input type="button" value="Edit"/> <input type="button" value="refresh"/>	
Footer	

! â&• i3



/	5GHz 11a	5GHz Turbo Mode 11a		5GHz	802.11a
	u 5GHz	Turbo Mode 11a			108Mbps
	Bridge		Turbo Mode 11a	u	
/	2.4GHz	Mixed 11g	2.4GHz 11g only		2.4GHz
	u 2.4GHz	11g only	11g		2.4GHz Mixed 11g
	11b/11g	u			
/	2.4GHz	Mixed 11g WiFi	2.4GHz 11g only WiFi		WiFi
	u				

·	Total Output Power (EIRP) –					dBm		
	7	17dBm	16dBm	15dBm	14dBm	10dBm	4dBm	0dBm
		14dBm						
·	Antenna Gain –	RG-P-780				P-780		A-807
·	CELETT/	2.4GHz		4dBi				

Basic Wireless Setting	
Name	Value
Radio Name	wlan1
Domain	WORLD
Channel	11
Band	2.4GHz(Mixed 11g)
Total Output Power (EIRP)	14 dBm
Antenna	A-807
RTS Threshold	2347 bytes [0..2347]
DCA Threshold	0 mins <input type="checkbox"/> Enable DCA
DCA optional channel	<input type="checkbox"/> 1 <input type="checkbox"/> 2 <input type="checkbox"/> 3 <input type="checkbox"/> 4 <input type="checkbox"/> 5 <input type="checkbox"/> 6 <input type="checkbox"/> 7 <input type="checkbox"/> 8 <input type="checkbox"/> 9 <input type="checkbox"/> 10 <input type="checkbox"/> 11 <input type="checkbox"/> all
Layer2 Isolation	disabled
Mode	AP

Save Cancel

Note:

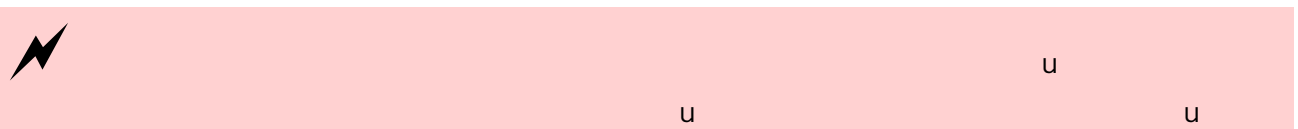
DCA

Basic Wireless Setting	
Name	Value
Radio Name	wlan1
Domain	WORLD
Channel	1
Total Output Power (EIRP)	14 dBm
Antenna	A-807
RTS Threshold	2347 bytes [0..2347]
DCA Threshold	10 mins <input checked="" type="checkbox"/> Enable DCA
DCA optional channel	<input checked="" type="checkbox"/> 1 <input type="checkbox"/> 2 <input type="checkbox"/> 3 <input type="checkbox"/> 4 <input checked="" type="checkbox"/> 5
Layer2 Isolation	disabled
Mode	AP

Save Cancel

Note:

- Radio Name P-780
- Domain regulatory domain
- 2.4 GHz 5 GHz



- Channels P-780
- Regulatory Domain

u DCA 2.4GHz u

DCA threshold DCA RG-P-780

DCA

u

DCA

u

u

DCA site survey

P-780 u

DCA optional channel DCA

DCA

DCA threshold

DCA optional channel

u

Layer 2 Isolation

MAC

[enabled/disabled]

Mode

AP

Bridge

Bridge

P-780

P-780

u

Bridge

P-780

u

Save –

Save

Basic Wireless Setting	
Radio :	wlan1
Name	Value
Domain	WORLD
Static Channel	11
Band	2.4GHz(Mixed 11g)
Total Output Power (EIRP)	14dBm
Antenna Gain	4dBi
RTS Threshold	2347 bytes
Layer2 Isolation	disabled
Mode	AP
Action	Edit
Site Survey	
Note:	

DCA

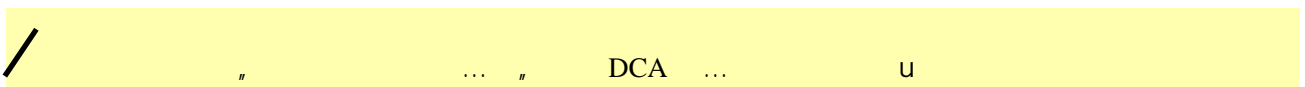
Basic Wireless Setting	
Radio :	wlan1
Name	Value
Domain	WORLD
Auto Channel	auto
Band	2.4GHz(Mixed 11g)
Total Output Power (EIRP)	14dBm
Antenna Gain	4dBi
RTS Threshold	2347 bytes
DCA Threshold	10 mins
Layer2 Isolation	disabled
Mode	AP
Action	Edit
Site Survey	
Discard Changes	Apply Changes
Note:	

Apply Changes –

Apply Changes

Discard Changes –

DCA



Basic Wireless Setting	
Radio :	wlan1
Name	Value
Domain	WORLD
Channel	11
Band	2.4GHz(Mixed 11g)
Total Output Power (EIRP)	14dBm
Antenna Gain	4dBi
RTS Threshold	2347 bytes
Layer2 Isolation	disabled
Mode	AP
<input type="button" value="Edit"/> <input type="button" value="Site Survey"/> <input type="button" value="Action"/>	
Note:	
<input type="button" value="Reboot"/>	
Server needs to be restarted. Please reboot.	

- **Edit** **Edit**
- **Reboot**

	Reboot	u	
	Edit	u Save	Reboot
	u		

6.5.2 Wireless | Advance

RG-P-780 Multiple BSSID 16

	Multiple BSSID	Multiple ESSID	
u	RG-P-780	S	S
u			
Bridge		20	

AP :



AP New Edit MBSSID

Advance Wireless Setting			
		Radio: wlan1	
		Interface:	wlan1_0
		Mode:	AP
		SSID:	P-780
		Hidden SSID:	<input type="checkbox"/> Need Hidden SSID
		VLAN and QoS	
			<input checked="" type="radio"/> SSID priority(Disable VLAN)
	<input type="text" value="0"/> (0~7)		priority:
			<input type="radio"/> Enable VLAN
	<input type="text" value="1"/> (1~4094)		VLAN ID
Tag	<input type="text"/> (0~7)		802.1p

- Radio – [wlan1/wlan2]
- Mode – RG-P-780 [AP/Bridge]
- Interface – MBSSID | Bridge
- SSID – 32
 - SSID P-780 AP SSID
 - AP SSID

MBSSID	BSSID	SSIDu	BSSID	SSIDu
SSID	" -... "	" _..u		

- Hidden SSID – SSID Beacon SSID AP
- SSID

- **Dynamic Key Length** – [64-bits / 128-bits]
- **WPA – Wi-Fi Protected Access,** WPA RADIUS
- **WPA2 – WPA** WPA2 RADIUS
- **WPA2 MIXED –** WPA2 WPA
- **RADIUS Server Profile –** RADIUS

Network | RADIUS Servers

- **Algorithm –** WPA WPA2 [TKIP/AES]
- **Group Key Rekey interval –** 10

<input type="radio"/> WPA-PSK		
	Use Pre-Shared Key:	<input type="text"/>
	Algorithm:	TKIP <input type="button" value="v"/>
	Group Key Rekey Interval:	<input type="text"/> Minutes
<input type="radio"/> WPA2-PSK		
	Use Pre-Shared Key:	<input type="text"/>
	Algorithm:	TKIP <input type="button" value="v"/>
	Group Key Rekey Interval:	<input type="text"/> Minutes
<input type="radio"/> WPA2-PSK MIXED		
	Use Pre-Shared Key:	<input type="text"/>
	Algorithm:	TKIP/AES
	Group Key Rekey Interval:	<input type="text"/> Minutes
		<input type="radio"/> MAC Auth
<input type="button" value="v"/>		RADIUS Server Profile:
RADIUS Server is NULL. Click here to add profile...		
		<input type="radio"/> Disabled

- **WPA-PSK –** RADIUS WPA PMK
- **WPA2-PSK –** RADIUS WPA2 PMK
WPA2 PSK AP WPA PSK
- **WPA2-PSK MIXED –** WPA2-PSK WPA-PSK AP
- **Use Pre-Shared Key –** 8-64 WPA
- **Algorithm –** TKIP, AES

Advance Wireless Setting	
Radio:	wlan2
Interface:	bridge2_1
Mode:	Bridge
Remote MAC:	00:90:4B:0C:42:06
Security:	WEP [KeyIndex: 1]
Return	
Note:	

Edit

bridge link

New

bridge link

Advance Wireless Setting	
Radio:	wlan2
Interface:	bridge2_0
Mode:	Bridge
Remote MAC:	00:00:00:00:00:00
Security:	<input type="radio"/> WEP(Wired Equivalent Privacy) <input type="radio"/> WPA-PSK
	WEP KeyIndex: 1
	Algorithm: TKIP
	Rekey Interval: []
<input checked="" type="radio"/> Disabled	
Save Cancel	
Note:	

Remote MAC –

Bridge link

MAC

Security –

WEP

WPA-PSK(TKIP

AES)

WEP

aaaa.u

Radio Setting		
Radio:	wlan1	
WEP Configuration		
Index	Key	Action
Key 1	*****	<input type="button" value="Edit"/>
Key 2	*****	<input type="button" value="Edit"/>
Key 3	*****	<input type="button" value="Edit"/>
Key 4	*****	<input type="button" value="Edit"/>
The network password needs to be 64bits or 128bits depending on your network configuration. This can be entered as 5 or 13 ascii characters or 10 or 26 hexadecimal characters.		
Note:		

Radio – [wlan1/wlan2]

Edit – WEP

WEP , aaaa.U U

Radio Setting		
Radio:	wlan1	
WEP Configuration		
Action	Index	Key
<input type="button" value="Save"/> <input type="button" value="Cancel"/>	Key 1	<input type="text"/>
<input type="button" value="Edit"/>	Key 2	*****
<input type="button" value="Edit"/>	Key 3	*****
<input type="button" value="Edit"/>	Key 4	*****
s depending on your network configuration. This can be entered as 5 or 13 ascii		The network password needs to be 64bits or 128bit characters or 10 or 26 hexadecimal characters.
Note:		

6.5.4 Wireless | MAC ACL

MAC ACL RG-P-780

Wireless | MAC ACL

Radio Setting	
Radio:	wlan1
Policy Setting	
Policy	disabled Edit
MAC ACL Configuration	
MAC List	Action
Add	
Note:	

Radio – MAC ACL [wlan1/wlan2]

AP MAC ACLu Bridge MAC
ACL u

Policy Setting – edit Allow Deny Disable
ACL disabled P-780
ACL

Allow MAC MAC list AP
APu
Deny MAC MAC list AP
APu
Disabled ACLu

Radio Setting	
Radio:	wlan1
Policy Setting	
Policy	Disabled Save Cancel
MAC ACL Configuration	
MAC List	Action
Add	
Note:	

ACL MAC

Radio Setting	
Radio:	wlan1
Policy Setting	
Policy	deny <input type="button" value="Edit"/>
MAC ACL Configuration	
MAC List	Action
<input type="text"/>	MAC XX:XX:XX:XX:XX:XX is accepted <input type="button" value="Save"/> <input type="button" value="Cancel"/>

MAC Address – MAC [00:AA:A2:5C:89:56]
 Save – MAC

Radio Setting	
Radio:	wlan1
Policy Setting	
Policy	deny <input type="button" value="Edit"/>
MAC ACL Configuration	
MAC List	Action
9	<input type="button" value="Delete"/> [REDACTED] 00:90:4B:00:02:19
<input type="button" value="Add"/>	
<input type="button" value="Apply Changes"/> <input type="button" value="Discard Changes"/>	

Apply Changes –
 Discard Changes –

RG-P-780 Apply Changes
 Apply Change

Radio Setting	
Radio:	wlan1
Policy Setting	
Policy	deny <input type="button" value="Edit"/>
MAC ACL Configuration	
MAC List	Action
00:90:4B:00:02:19	<input type="button" value="Delete"/>
<input type="button" value="Add"/>	
Note:	
<input type="button" value="Reboot"/>	
Server needs to be restarted. Please reboot.	

Reboot – Reboot

Reboot	U
Reboot	U

6.6 System

6.6.1 System | Security

System | Security

The screenshot shows a web interface for setting the administrator password. It includes the following elements:

- UserName:** A text input field containing the value "admin".
- Old Password:** A text input field.
- New Password:** A text input field.
- Confirm Password:** A text input field.
- Buttons:** "Save" and "Cancel" buttons.
- Note:** A grey bar at the bottom contains the text "Note: Administrator Password Setting".

User Name –	RG-P-780	Web	CLI	[1-32]
-------------	----------	-----	-----	--------

Old Password –

New Password –	[4-8]
----------------	-------

Confirm Password –

Save –

admin	admin01
4-8	U

6.6.2 System | SNMP

SNMP	Internet	SNMP
SNMP		



System | SNMP

SNMP

General Configuration		
Name	Value	Action
Readonly community	public	<input type="button" value="Edit"/>
Readwrite community	private	<input type="button" value="Edit"/>
DefaultTrap community	public	<input type="button" value="Edit"/>

Trap Configuration		
Trap Type	Host IP	Host Port
		<input type="button" value="Add"/>

Note: SNMP Configuration

- **Readonly community** – SNMP v1 MIB SNMP v2c Read-only public MIB
[1-32 ASCII]
- **Readwrite community** – SNMP v1 MIB SNMP v2c MIB Read-write
private [1-32 ASCII]
- **Default Trap community** – Trap SNMP SNMP NMS
public trap [1-32 ASCII]

table [1-32 ASCII]

Save –

Cancel –

6.6.3 System | Telnet

System | Telnet RG-P-780 telnet/SSH

Telnet		
Name	Status	Action
Telnet Service	Enabled	Edit
SSH Service	Enabled	Edit
Note:		

Telnet Service – RG-P-780 telnet

SSH Service – RG-P-780 SSH

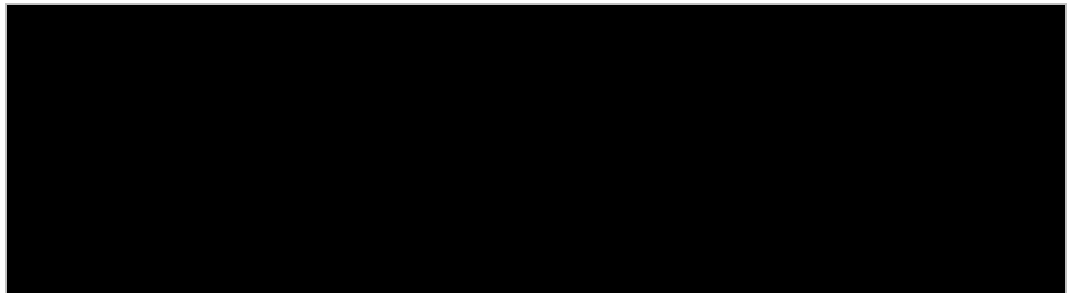
Enabled telnet/CLISH RG-P-780
IETF SSH SSHv2

6.6.4 System | Configuration

System | Configuration

Backup –

Upload/Restore –



Preparation

Configuration Backup	
Description Message	Action
P-780.GSI.2.25.2919	<input type="button" value="Preparation"/>

.cfg

Description Message

Preparation

Download

PC

Configuration Backup		
Message	Action	Description
Please store Configuration backup file in safe place. Configuration file name should only include English characters or numbers.	<input type="button" value="Download"/>	Download and Warning: Co
System Configuration		Note: Syst

U

RG-P-780u

Browse

RG-P-780

Configuration Upload	
Description Message	Action
Configuration file to upload	<input type="text"/> <input type="button" value="Browse..."/>
<input type="button" value="Upload"/> <input type="button" value="Cancel"/>	
Note: System Configuration Upload.	

Upload

Configuration Upload	
Configuration File Information	
HOST IP	192.168.2.2
HOST VERSION	P-780.GSI.2.25.2919
Create Time	Tue Jul 19 14:32:20 2005
Description	P-780.GSI.2.25.2919
Check it and Press OK, then device will reboot and the new configuration will take effect	
<input type="button" value="OK"/> <input type="button" value="Cancel"/>	
Note: System Configuration	

HOST IP –

IP

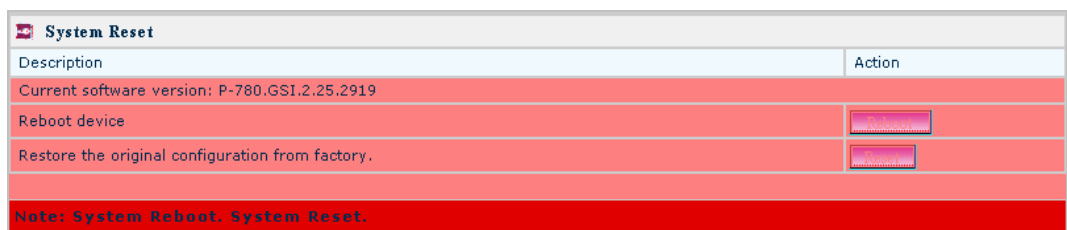
/ IP u

HOST VERSION –

OK –

OK

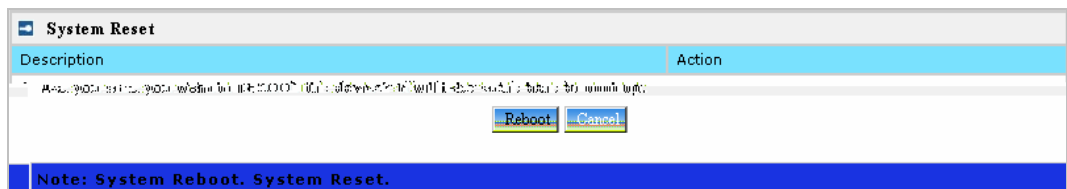
6.6.5 System | Reset



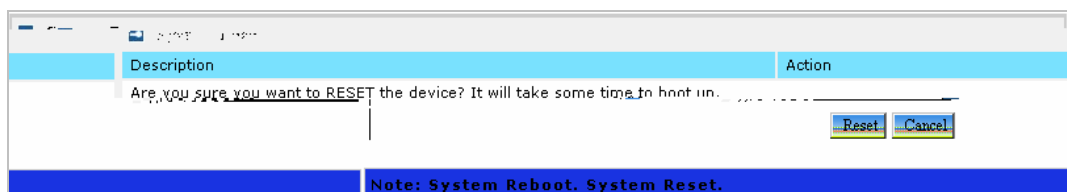
Reboot –

Reset –

Reboot



Reset



/ u

6.6.6 System | Upgrade



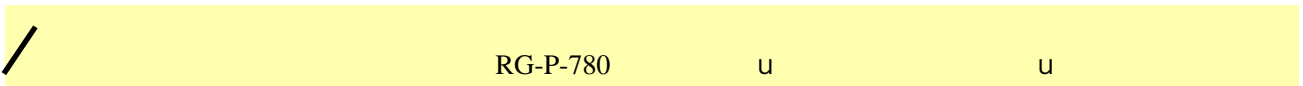
Upload – firmware

Firmware Upgrade	
Description	Action
Current software version: P-780.GSI.2.25.2919	
Upgrade the firmware	<input type="button" value="Upgrade"/>
Note: Firmware Upgrade	

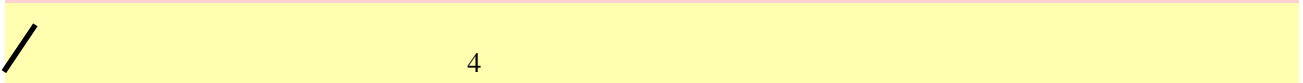
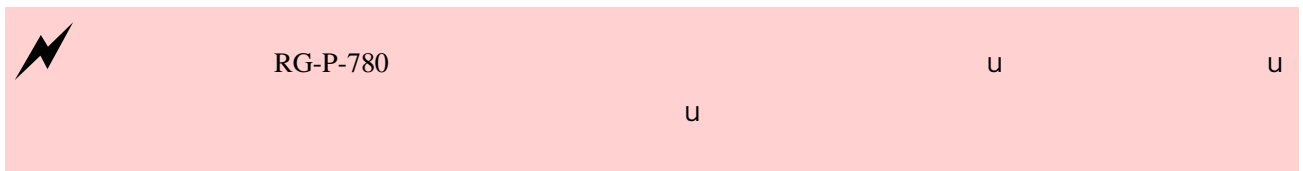
Upload firmware image
Upload

Firmware Upgrade	
Description	Action
<input type="button" value="Browse..."/> Firmware image	
<input type="button" value="Upload"/> <input type="button" value="Cancel"/>	<input type="button" value="U"/>
Note: Firmware Upgrade	

Upgrade firmware image flash



Firmware Upgrade	
Description	Action
Firmware image successfully uploaded to server. Press Upgrade button to Upgrade image now and reboot server.	
	<input type="button" value="Upgrade"/> <input type="button" value="Cancel"/>
Note: Firmware Upgrade	



7

7.1

	IEEE 802.11b DSSS	IEEE 802.11g OFDM	IEEE 802.11a OFDM
--	-------------------	-------------------	-------------------



	/
--	---



DHCP	Disable
DHCP	Disable
NTP	Disable
Telnet	Enable
SSH	Enable
WLAN1	
	11g
Regulatory Domain	World
SSID	RG-P-780
	11
RTS	2347 bytes
RF	14dBm

7.3

7.3.1 802.11g

	(MHz)	USA, (FCC)	Canada	European Union (CE/ETSI)	WORLD (CE/FCC)	Japan (TELEC)
1	2412					
2	2417					
3	2422					



40

5200