

# RSR820

**V1.06**

**2022-06-30**

copyright © 2022







/

**2.**

# 1

RSR820

32 RISC  
RSR820

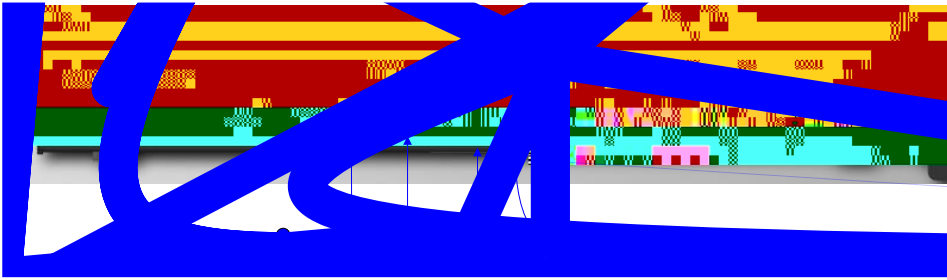
## 1.1 RSR820

	RSR820
	5

RSR820

1-1

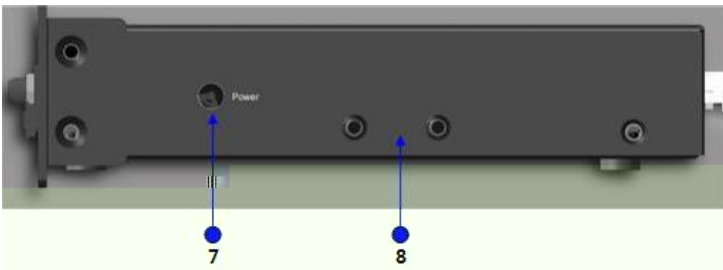
1-1 RSR820



RSR820

1-2

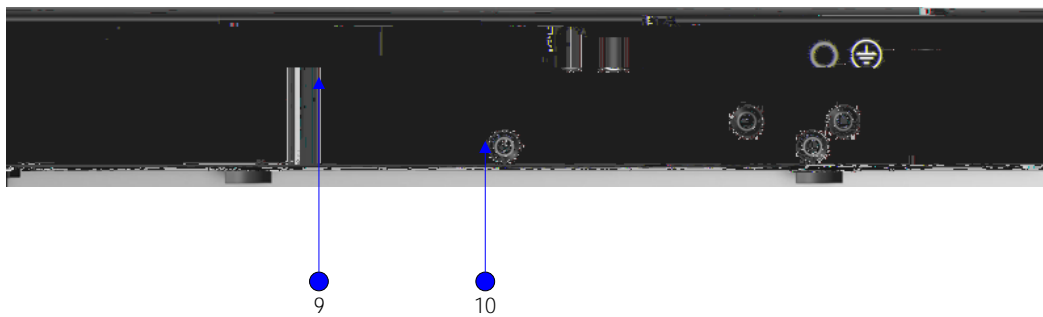
1-2 RSR820



RSR820

1-3

1-3 RSR820




1	FUNC	7
2	SYS	8
3	USB      USB	9
4	Console	10
5	GEO	
6	GE 1—4	

RSR820

100 240V 50~60Hz

12V 1.5A

	SYS		
USB			USB
			USB
			USB
	GEO-GE4		link
			link

RSR820

FUNC

FUNC

USB



U

FUNC



U

FUNC

U



U

FUNC

RGOS

---

## 1.2 RSR820

---



: RSR820

---

### 1.2.1

- RSR820
- RJ45 ARP 802.1Q
- X.25 HDLC PPP SLIP
- TCP/IP IP ICMP IGMP TCP UDP
- IP RIP V1/V2 OSPF V1/V2
- SNMP
- TELNET TELNET
- DHCP Server DHCP Client DHCP Relay TFTP
- VRRP
- PPPOE
- DNS DDNS
- X-MODEM
- NAT ACL AAA
- IPSEC L2TP PPTP

### 1.2.2

### 1.2.3

- 
- 

### 1.2.4

- DEBUG
-

- 
- SNMP
- 

- 1) Console
- 2) TELNET
- 3)

### 1.2.5

- IP
- AAA RADIUS
- PPP PAP CHAP callback
- 
- OSPF RIP V2
- NAT
- IPSEC/IKE
- GRE
- VLAN

### 1.2.6

- X-MODEM ( Windows XP Windows NT UNIX DOS )  
Console
- TFTP
- BOOTROM
- U



RSR820

- -10 ~60
- 10%~90%



1.5m

0.4m



### 2.2.2

( $\mu\text{m}$ )	0.5	1	3	5
( )	1.4 $\times$ 10 <sup>7</sup>	7 $\times$ 10 <sup>5</sup>	2.4 $\times$ 10 <sup>5</sup>	1.3 $\times$ 10 <sup>5</sup>

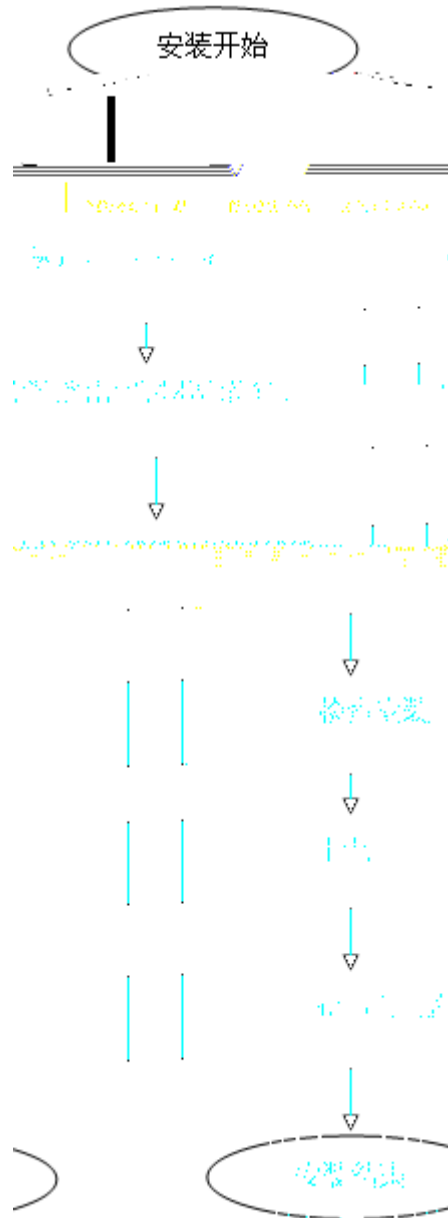
SO<sub>2</sub> H

6)

- 
- 
- 
-

### 3

#### 3.1



#### 3.2

■

- 
- 
- 

### 3.2.1

30mm

2

RSR820

3-1 RSR820



### 3.2.2

RSR820

30mm

2

3-1

### **3.2.3**

19

### 3.4

EIA/TIA-232

Console

	RJ-45
	EIA/TIA-232
	9600bps
	1
	2

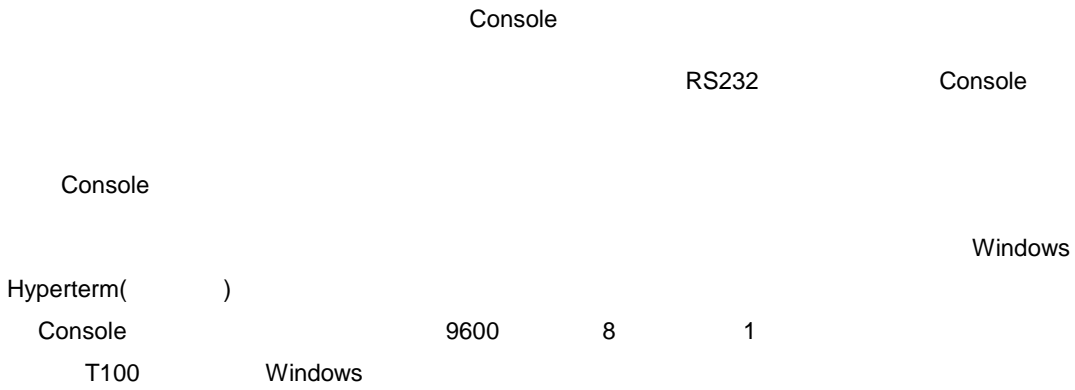
RJ45

DB-9

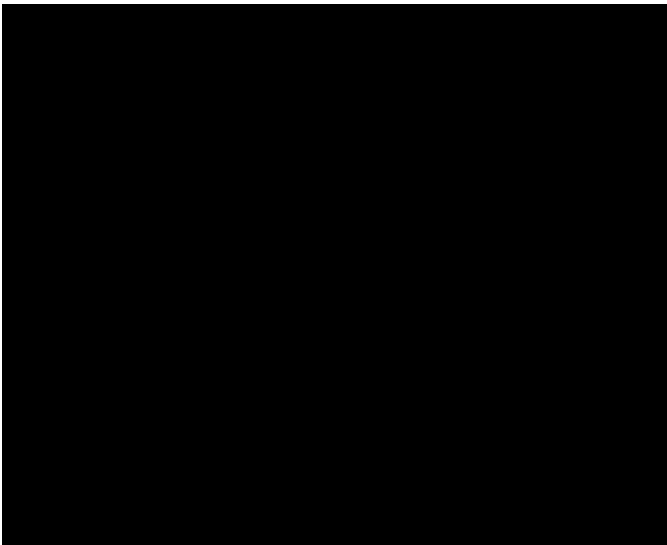
# 4

## 4.1

### 4.1.1



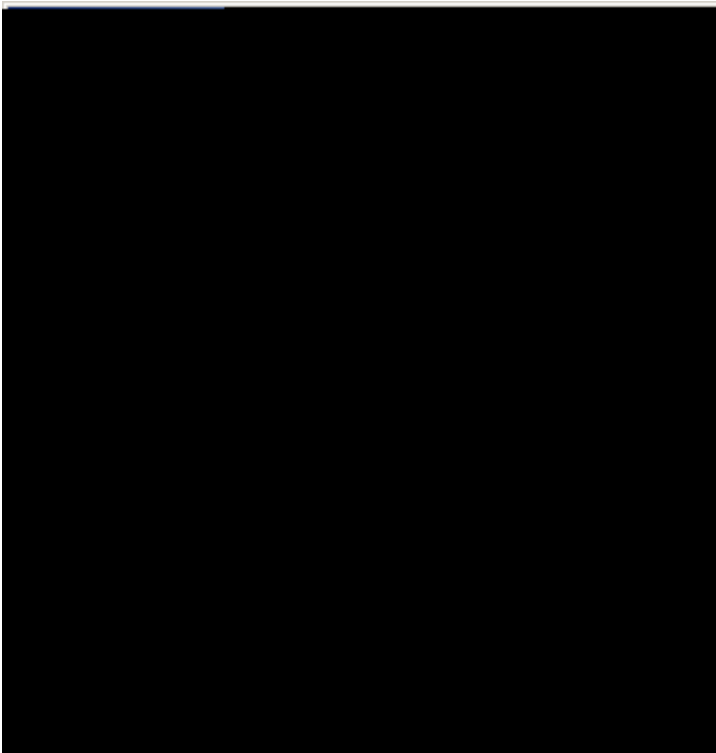
4-1



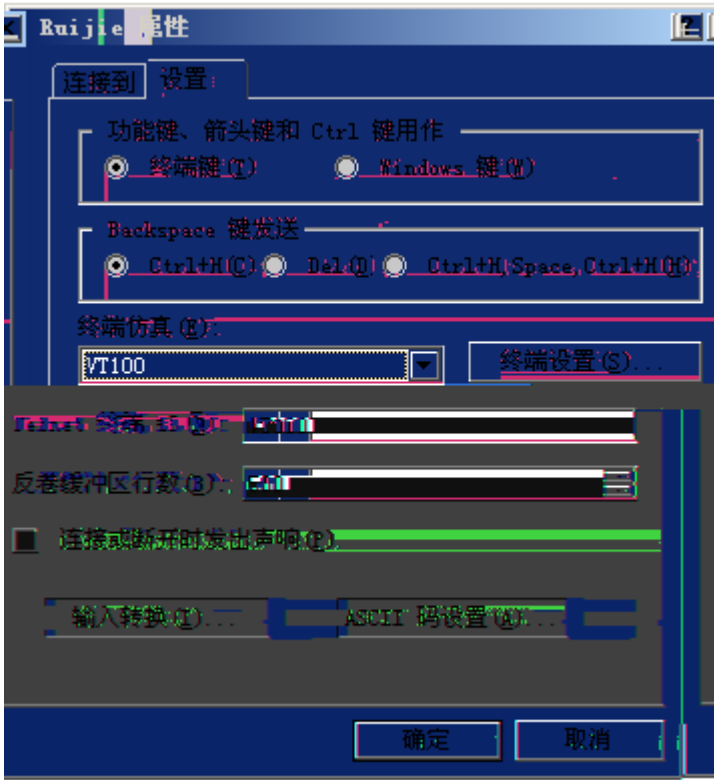
4-2 Console



4-3



4-4



## 4.2

### 4.2.1

- 
- 
- 

### 4.2.2

### 4.2.3

-

- SYS
- 
- 

#### 4.2.4

D+aEdXAc44#1E38FCD+cEd036pro1 115.1 572.86 Tm[(-)] TJET EMC /P <</MCID 45>> BDC BT1 0 0 1 118.1 448 pMTD\_NAND\_FOU

```
System bootstrap ...
Boot Version: RGOS 10.4(3b13) Release(166021)
Nor Flash ID: 0x0102194D, SIZE: 33554432Bytes
MTD_DRIVER-5-MTD_NAND_FOUND: 1 NAND chips(chip size : 134217728) detected
Post-EMC+G main Boot ET.E0 1 83 Tmn3 Tm0 10(ZE:7 61977.02s)-9554433333
Verify the image ..[ok]
Loading main program ...
Loading main program 'rgos.bin'.
```

Copyright (c) 1998-2013s by Ruijie Networks.

All Rights Reserved.

Neither Decompiling Nor Reverse Engineering Shall Be Allowed.

\*Jan 1 00:54:20: %MTD\_DRIVER-5-MTD\_NAND\_FOUND: 1 NAND chips(chip size : 134217728) detected

\*Jan 1 00:54:38: %DEVICE-5-CHANGED: Device RSR820 (1) changed state to up.

\*Jan 1 00:54:38: %USB-5-MODEM\_FOUND: Modem <XXXX> bind with tty 1.

\*Jan 1 00:55:24: %SYS-5-WARMSTART: System coldstart.



## 4.3

# 5

## 5.1

RSR820

SYS

- 
- 
- 
- 

---

SYS

---

## 5.2

- 
- 
- 
- 

1

VT100

9600

8





# A

## 1000BASE-T/100BASE-TX/10BASE-T

1000BASE-T/100BASE-TX/10BASE-T

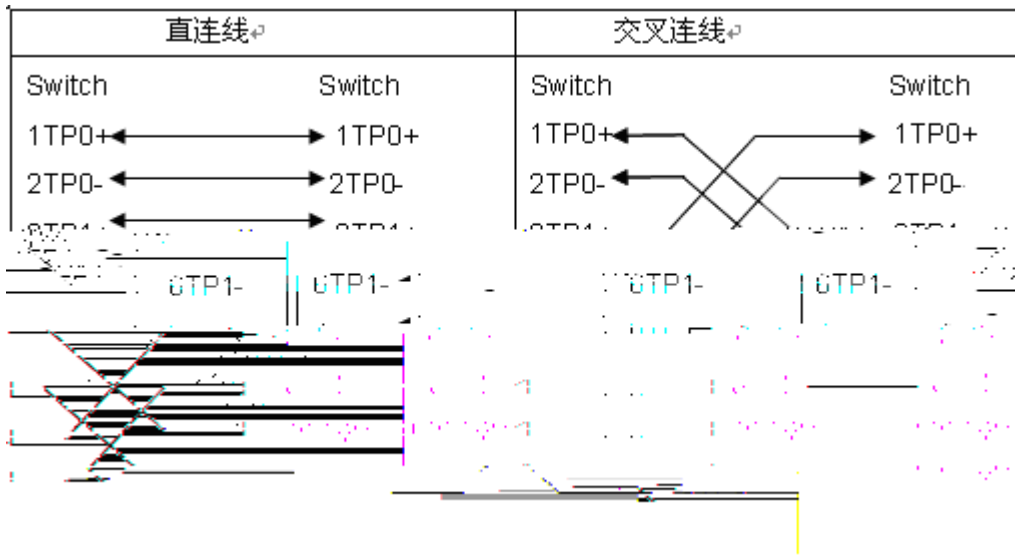
MDI/MDIX

Crossover

1000BASE-T IEEE 802.3ab 100-ohm 5 5 UTP 4 STP  
 100 1000BASE-T 4

1000BASE-T

A-1 1000BASE-T



100BASE-TX/10BASE-T

10Mbps

100-ohm 3,4,5

100Mbps

100-ohm 5

100

100BASE-TX/10BASE-T

A-2 100BASE-TX/10BASE-T

Pin	插座	插头
1	Input Receive Data+	Output Transmit Data+
2	Input Receive Data-	Output Transmit Data-

100BASE-TX/10BASE-T

A-3 100BASE-TX/10BASE-T

