



RG-AP220-SI

V1.13

©2000-2013



” <http://www.ruijie.com.cn/>

” <http://webchat.ruijie.com.cn>

8:30 6 “ ”

” <http://www.ruijie.com.cn/service.aspx>

” 7× 24 4008-111-000

” <http://support.ruijie.com.cn>

” service@ruijie.com.cn

WEB	WEB

1 C | O ”

RG-AP220-SI

AP220-SI

AP220-SI

AP Fit AP

/

AP Fat AP

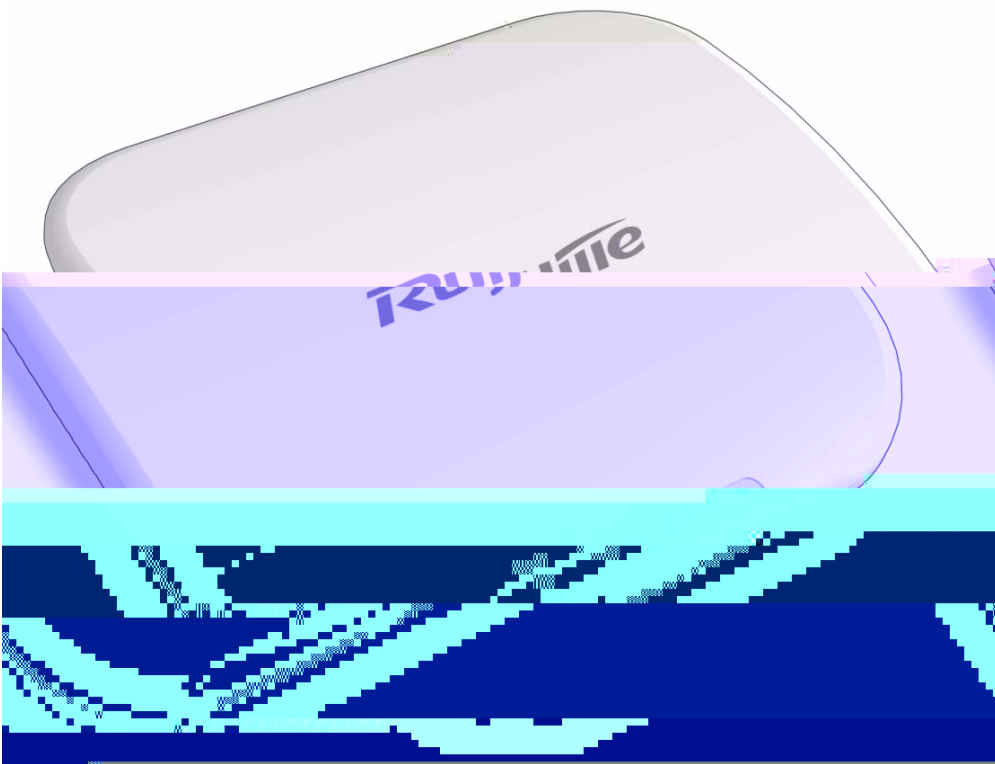
1.1 RG-AP220-SI

P á ? d

 RG-AP220-SI

RG-AP220-SI 1 1

1-1 RG-AP220-SI



1-2 RG-AP220-SI

Ce

	Status		AP
			AP
			AP
			AP
2.4G	2.4G		2.4G
			2.4G
			2.4G
	Ethernet		link down
			link up
			/ link up
			/
			/

1-3 RG-AP220-SI

1 1000BASE-T/100BASE-TX/10BASE-T

PoE

2 Console

1-4 RG-AP220-SI

3.48V

Ô |

RG-AP220-SI

PoE

”

” PoE

802.3af

44-57V

0.19A

bCã q å

RG-AP220-SI

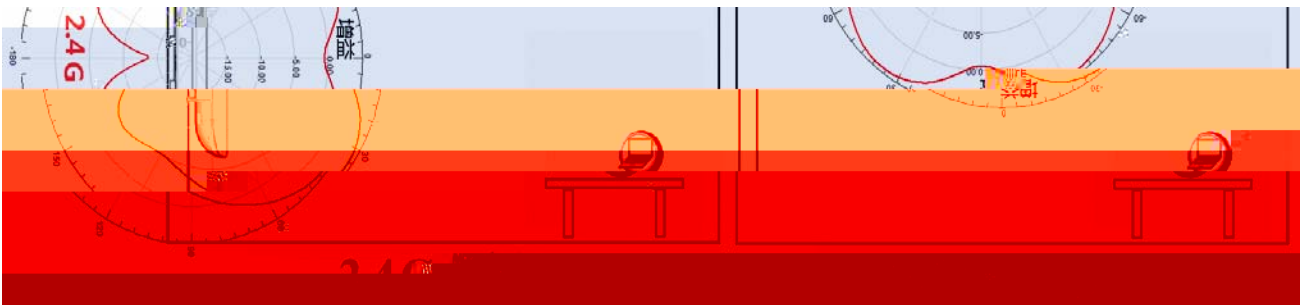
Ý Ž ì / q f ç

RG-AP220-SI

RG-AP220-SI

1-5

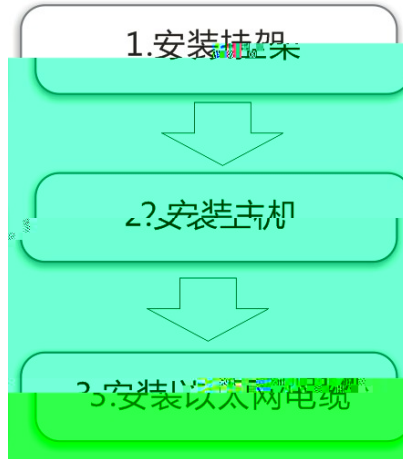
1-5 RG-AP220-SI



3 C | é G

È ò ½, < ... g` • Æ • ò • Æ N í ' Ð, < d

3.1 G W 8



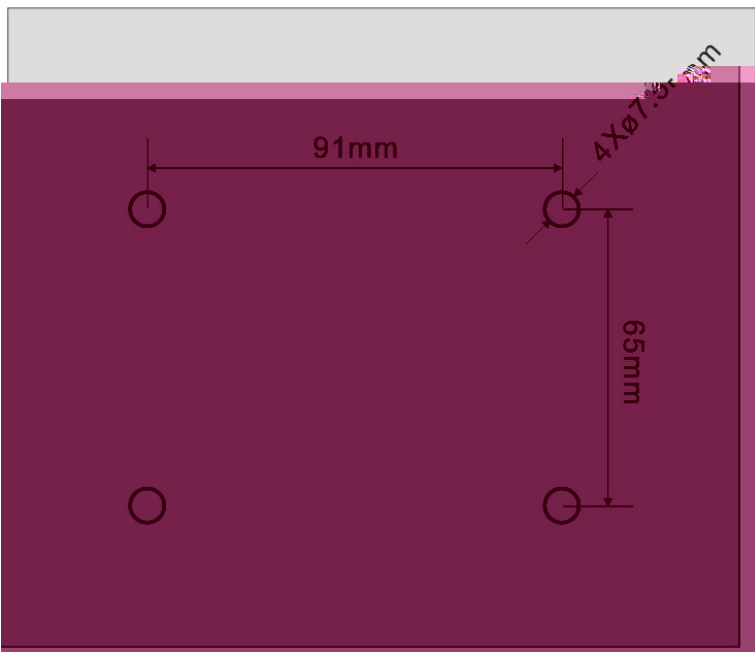
3.2 G ø \

”

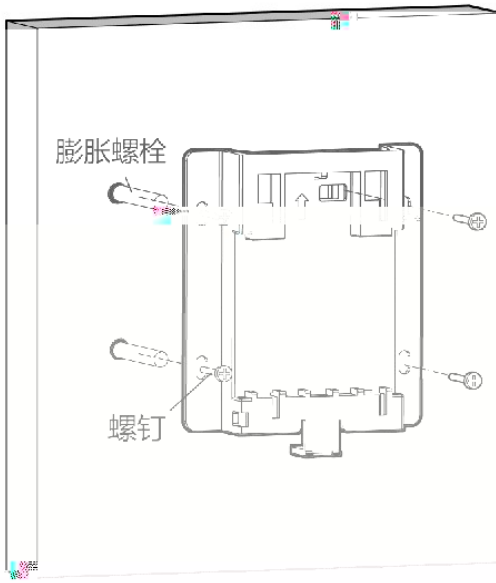
”
”
”
”
”
”

3.3 G 2

- 1) 4 91× 65mm
3-1



- 2)
3) 3-2
3-2



- 4) AP RJ45 .
- 5) AP 4 AP 3-4 AP

3-3

3-4

4 x ž • p

4.1 @ Ž ' ° Ê

PoE AP

4.2 Ô n

Ô ø é ó Ó

”

Ô d é ó Ó

” AP Status 30 Status
” 2.4G
” AP Ethernet 1000M Ethernet
100M/10M Ethernet link Ethernet
Ethernet

5 C|éñ0xçõ

5.1 ñ0 x

AP

Status

5.2 â8çõ

AP

AP

AP

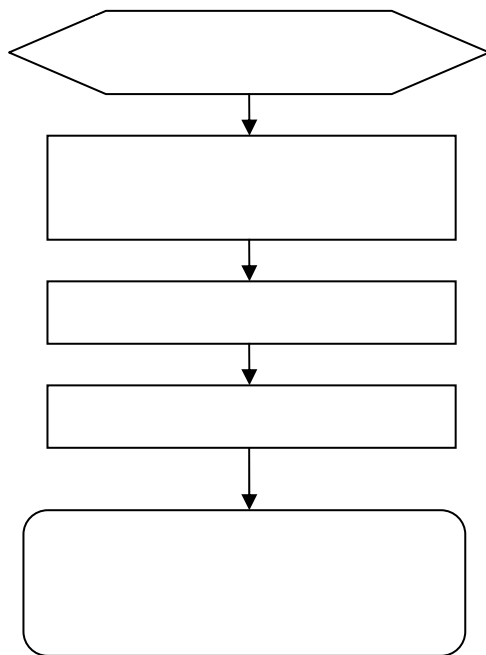
AP

AP

AC

6 G é n N \ m Ó Â

6.1 G \ m - Ó ù Ð W 8



\ çA ä / — x ä / O ” y f

1000BASE-T/100BASE-TX/10BASE-T O L

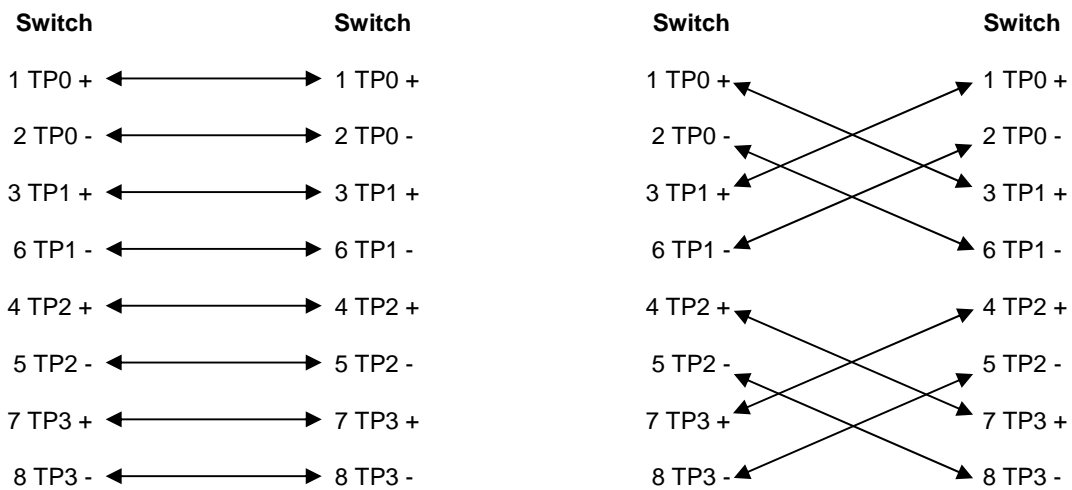
1000BASE-T/100BASE-TX/10BASE-T

MDI/MDIX Crossover

1000BASE-T IEEE 802.3ab 100-ohm 5 UTP STP
STP 100

1000BASE-T 4 4 1000BASE-T
A-1

A-1 1000BASE-T



100BASE-TX/10BASE-T

10Mbps 100-ohm 3 4 5 100Mbps

100-ohm 5 100

100BASE-TX/10BASE-T

A-2

A-2 100BASE-TX/10BASE-T

Pin		
1	Input Receive Data+	Output Transmit Data+
2	Input Receive Data-	Output Transmit Data-
3	Output Transmit Data+	Input Receive Data+
6	Output Transmit Data-	Input Receive Data-
4 5 7 8	Not Used	Not Used

100BASE-TX/10BASE-T

A-3

A-3 100BASE-TX/10BASE-T

