



S1908(16)+

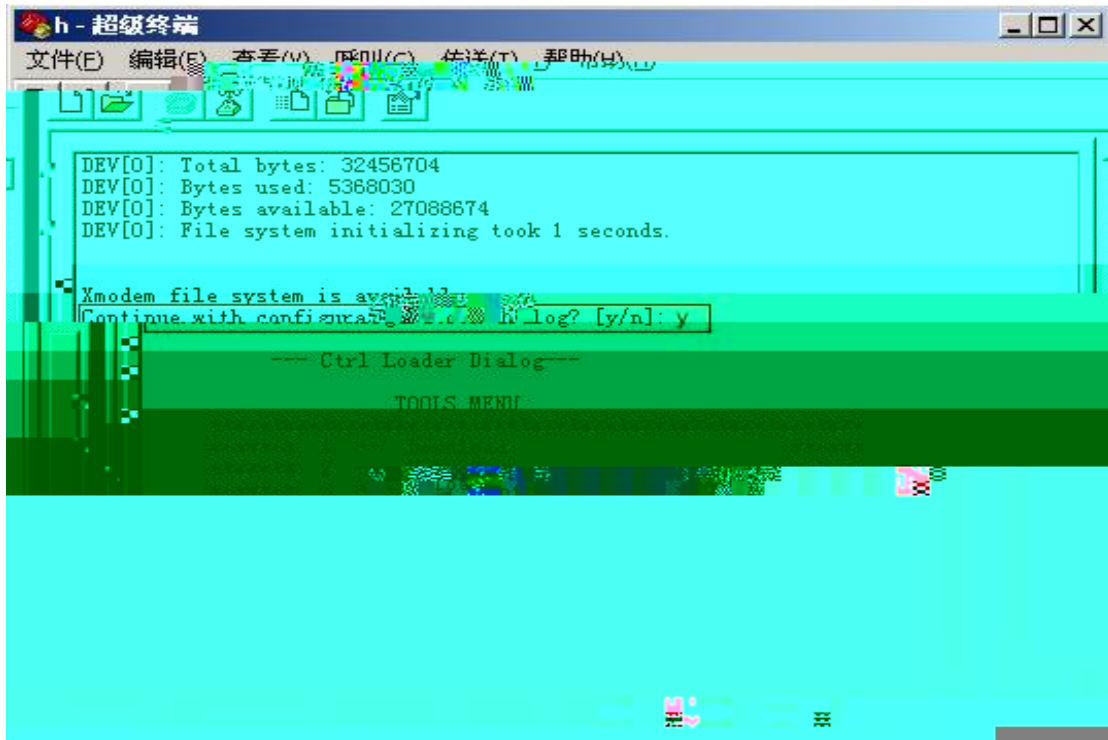
3

ESC

ctrl

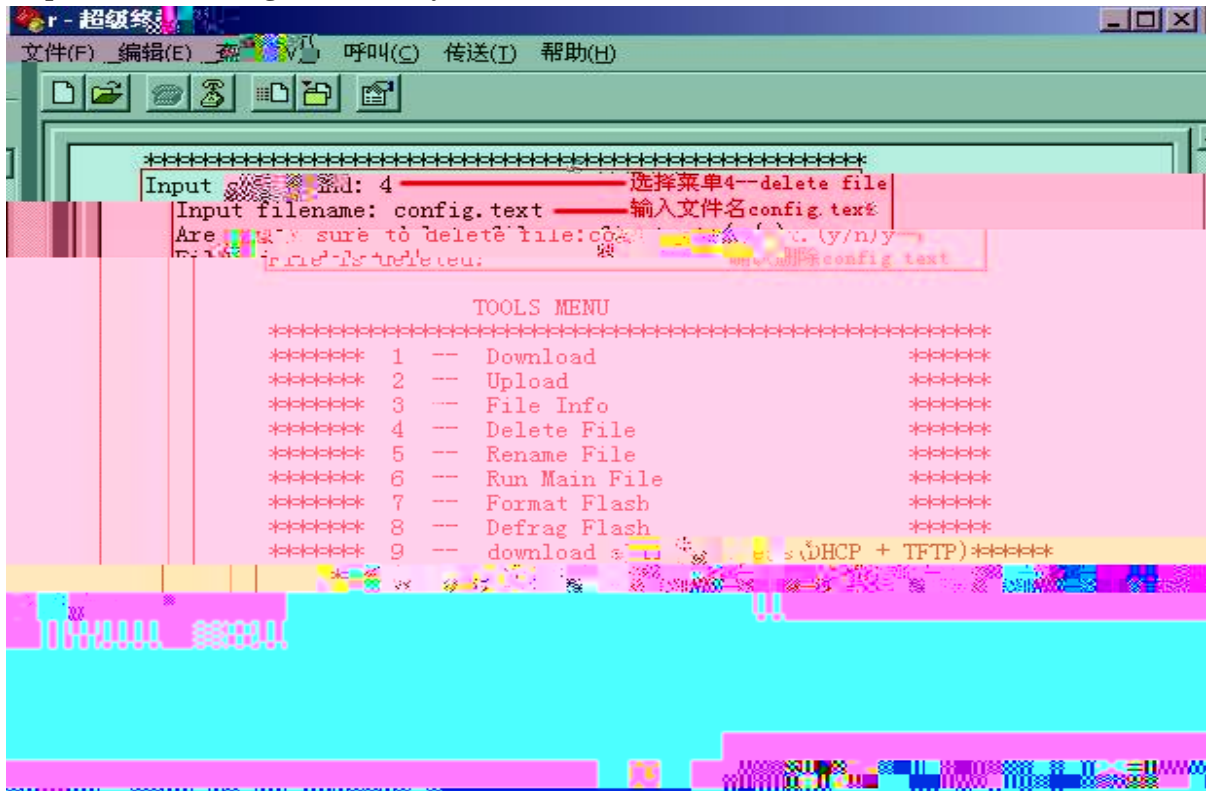
config.text

Continue with configuration dialog ?[y/n] y



4—delete file ;

input filename:config.text ; y 6



D. 6 Run Main File

E. 9600 console



F.

start: Enable sec level 15 0 start

G





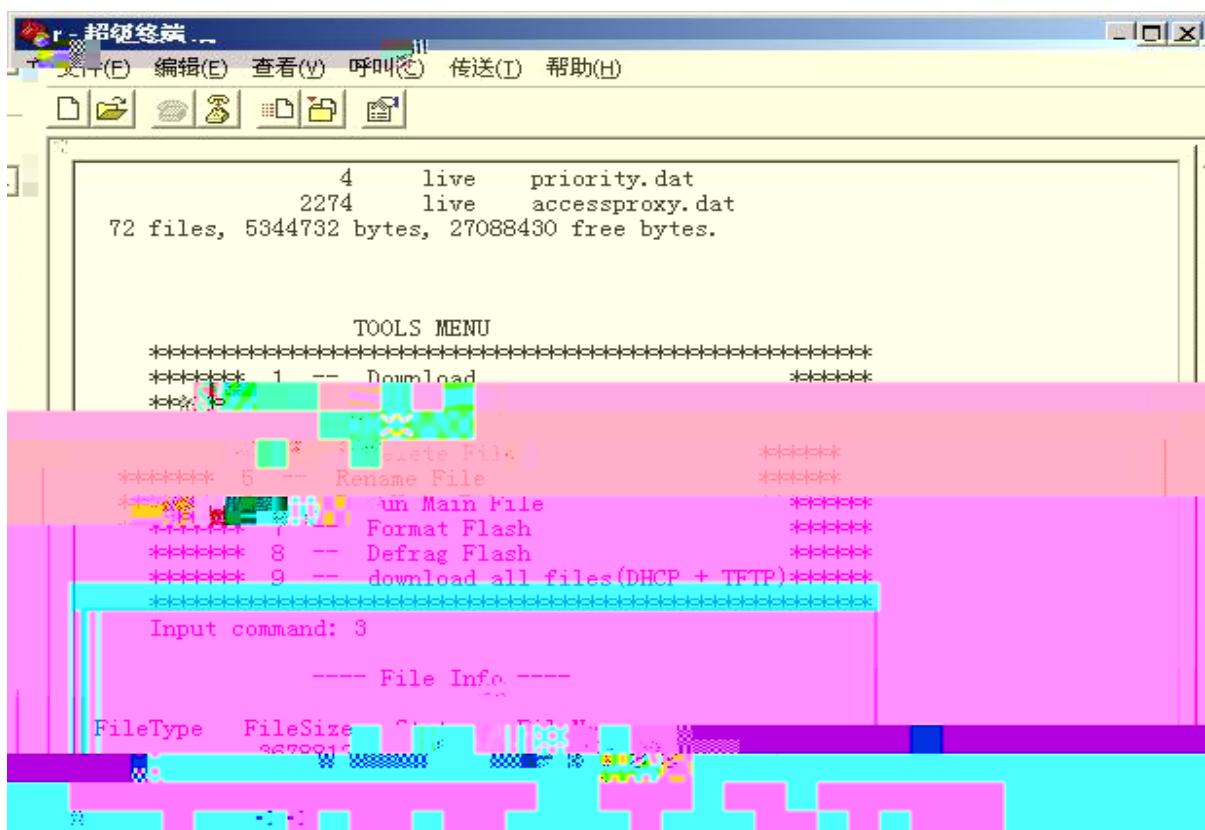
CTRL 3,

Input command: 3

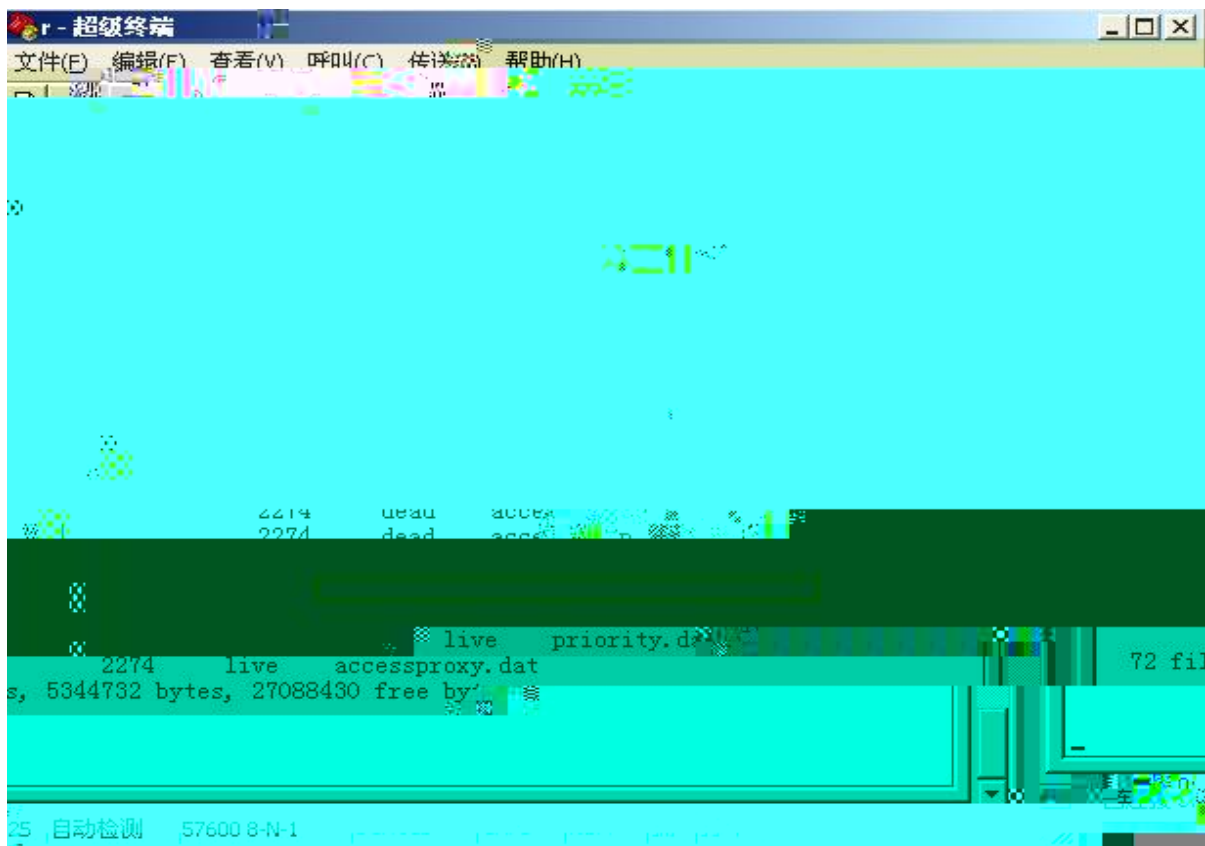
---- File Info ----

FileType	FileSize	Status	FileName
	3678812	live	S1908+26g.bin
	646	live	cli0.htm
	646	live	cli1.htm
	646	live	cli2.htm
	646	live	cli3.htm
	646	live	cli4.htm
	646	live	cli5.htm
	646	live	cli6.htm
	646	live	cli7.htm
	646	live	cli8.htm
	646	live	cli9.htm
	649	live	cli10.htm
	649	live	cli11.htm
	649	live	cli12.htm
	649	live	cli13.htm
	649	live	cli14.htm
	649	live	cli15.htm
	1147	live	index.htm
	2251	live	vms15.htm
	1285062	live	webclt.jar
	314192	live	image.jara
	2274	dead	accessproxy.dat
	2274	dead	accessproxy.dat
	133	dead	config.text
	48	dead	vlan.dat
	4	dead	priority.dat
	2274	dead	accessproxy.dat
	2274	dead	accessproxy.dat
	2274	dead	accessproxy.dat
	2274	dead	accessproxy.dat
	250	live	config.text
	48	live	vlan.dat
	4	live	priority.dat
	2274	live	accessproxy.dat

72 files, 5344732 bytes, 27088430 free bytes.

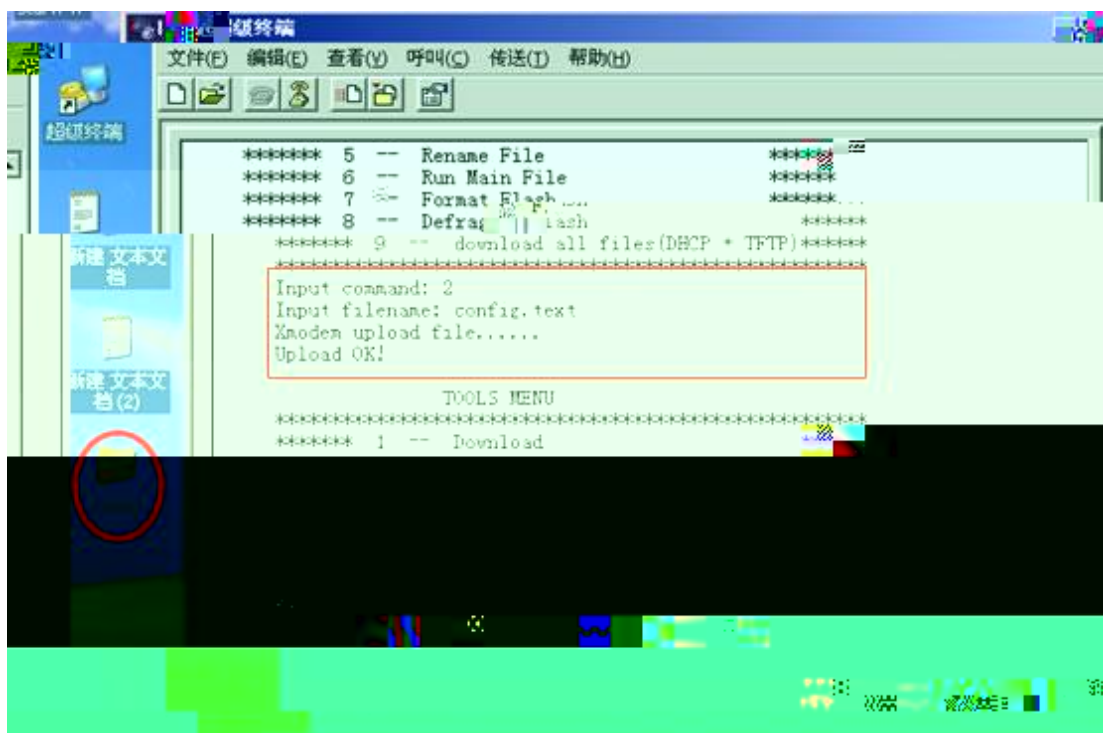


config.txt



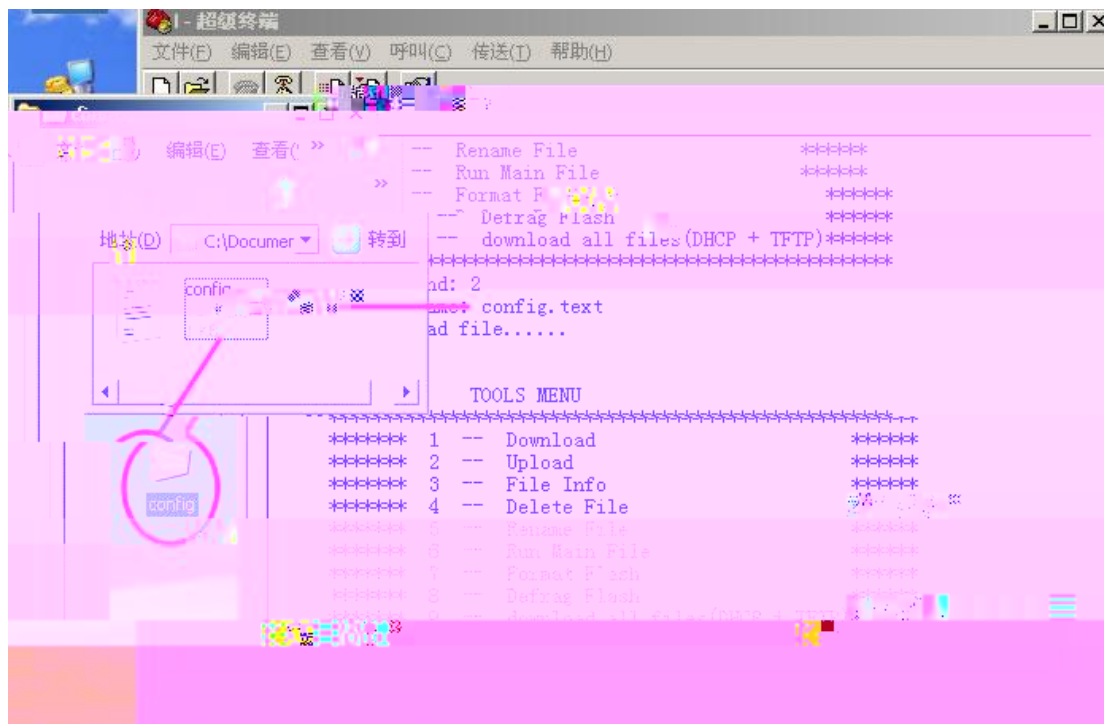
CTRL

1k Xmodem



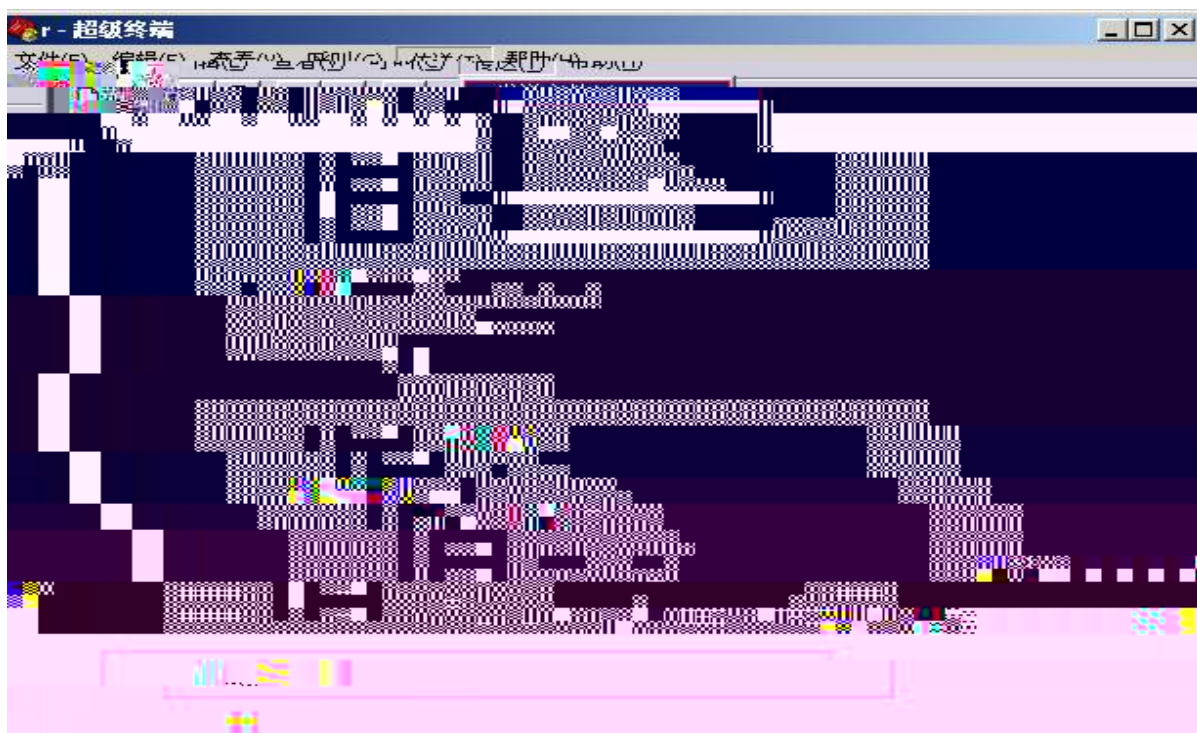
config

config.text



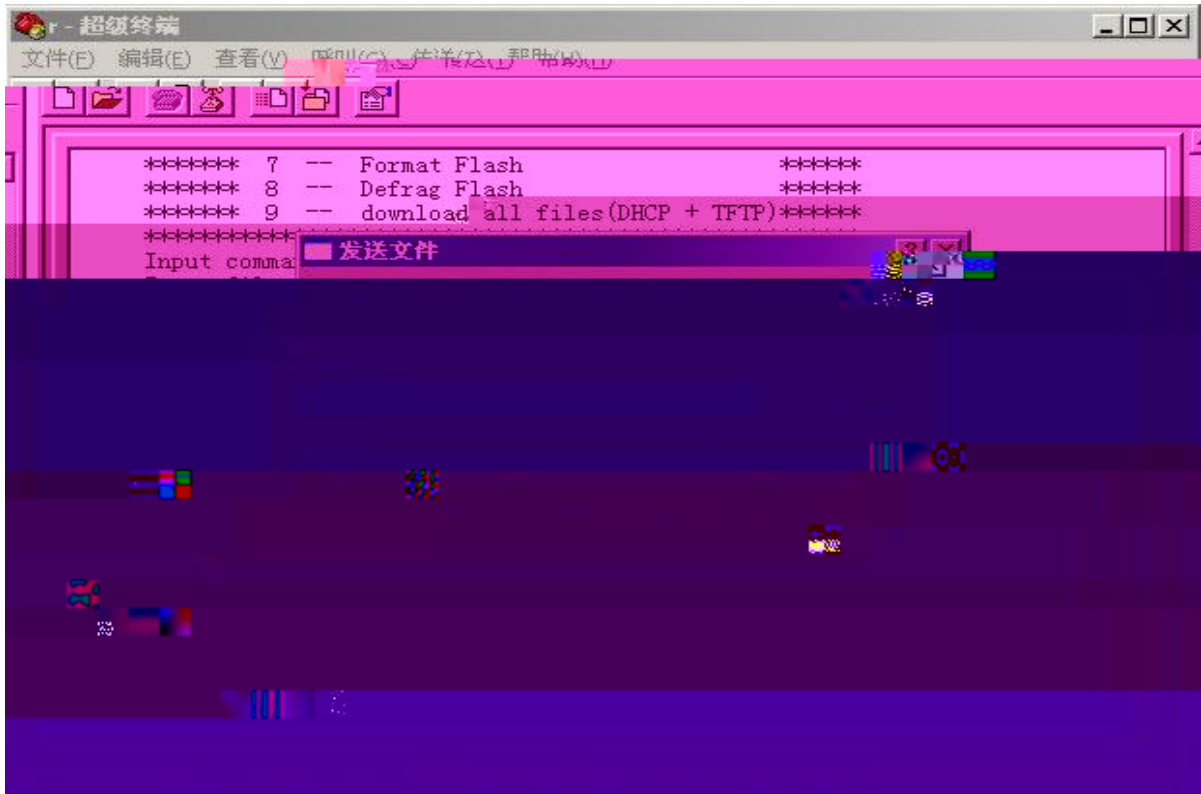
```
!  
  
vlan 1  
  
!  
interface vlan 1  
  no shutdown  
  ip address 192.168.26.49 255.255.255.0  
!  
End
```

```
config.text  
flash  
  
input command 1,  
input filename:config.text
```

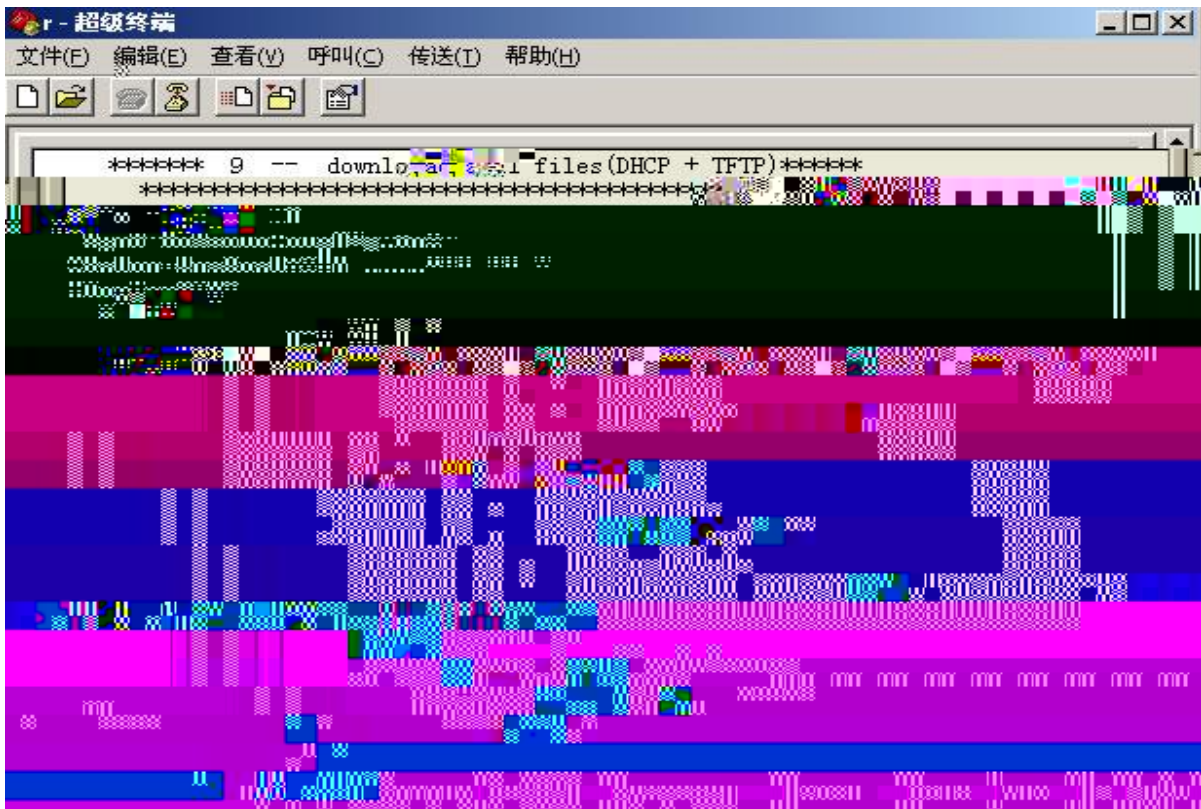


config.text,

config.text



download ok!





S1908+>**enable**

S1908+#**config t**

Enter configuration commands, one per line. End with CNTL/Z.

S1908+(config)#**enable sec level 15 0 star**

2006-03-14 10:07:58 @5-CONFIG:Configured from outband

S1908+(config)#**enable sec level 1 0 star**

2006-03-14