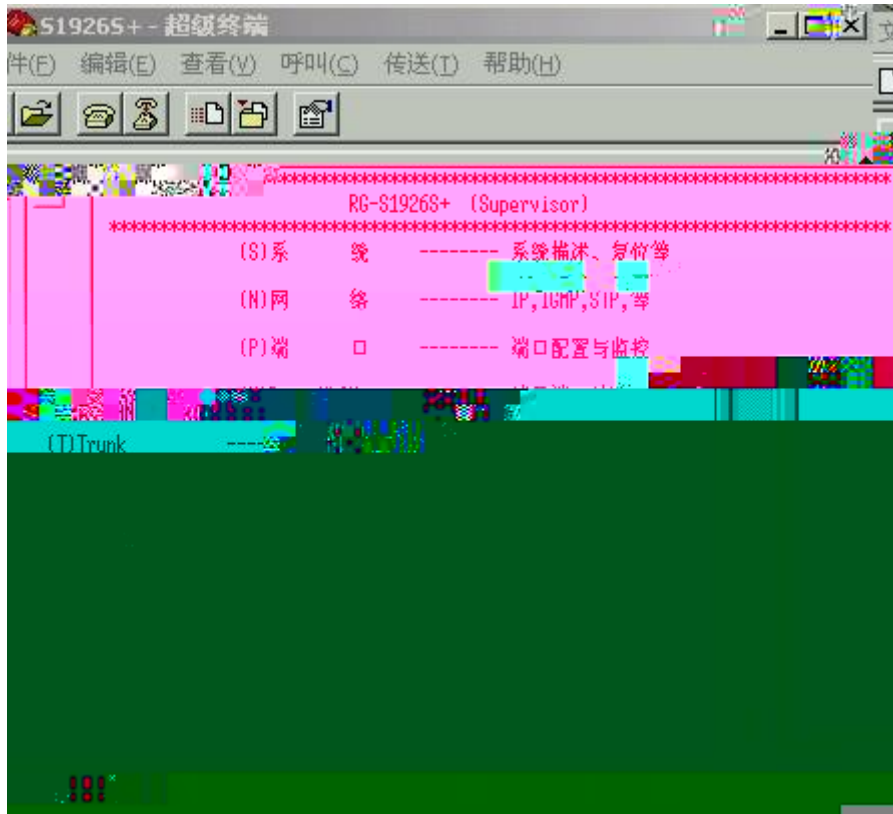
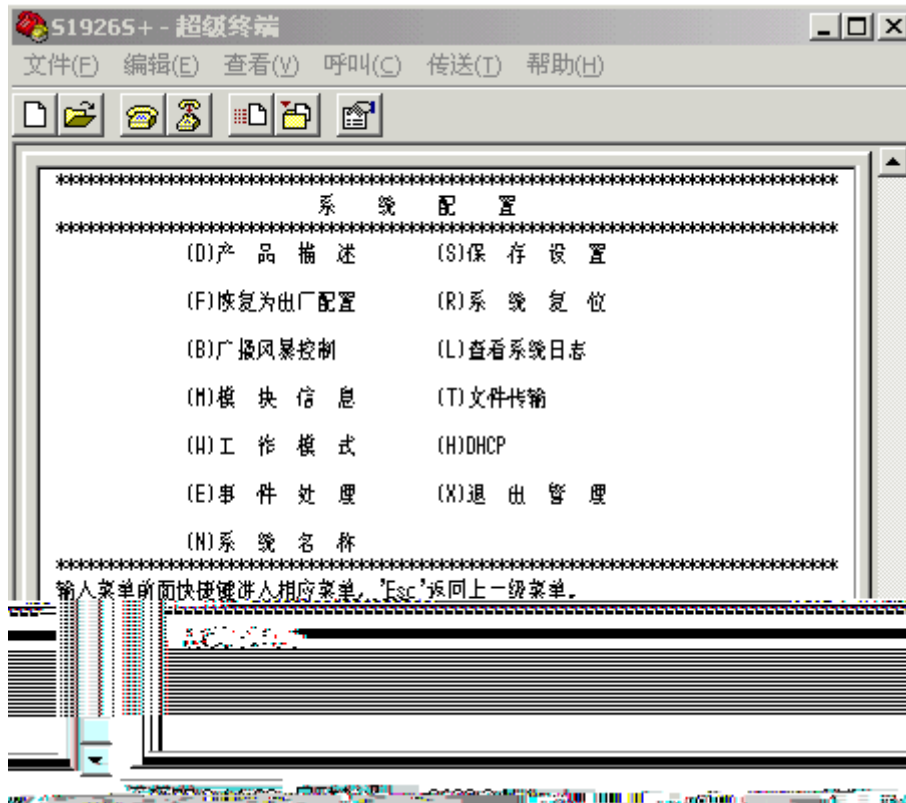


2

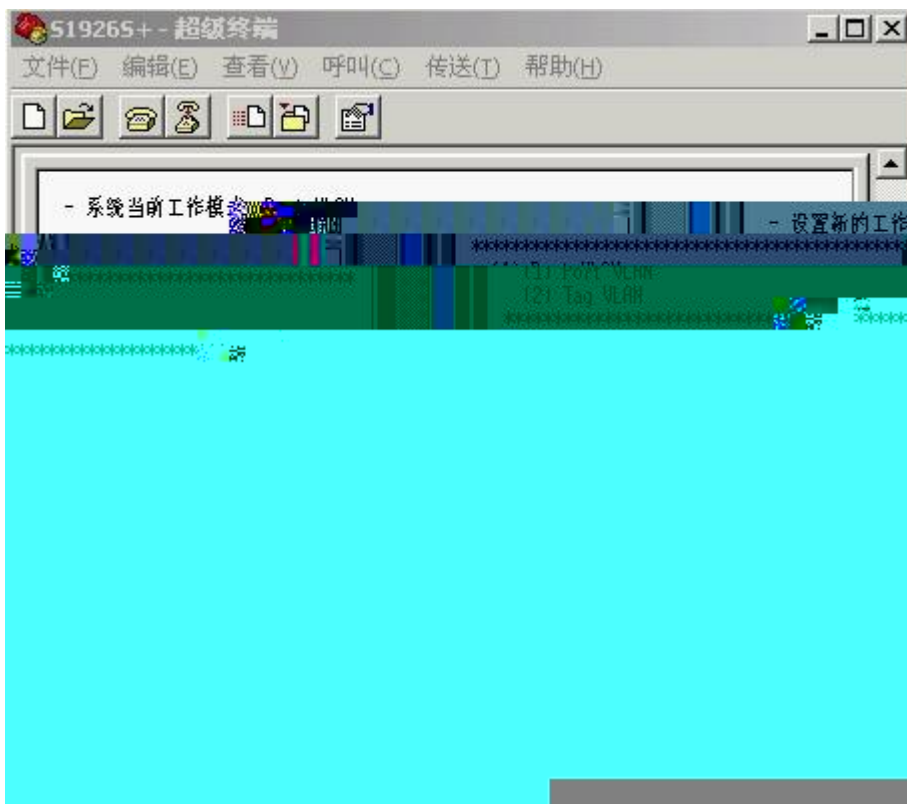
3 GB Chinese 1



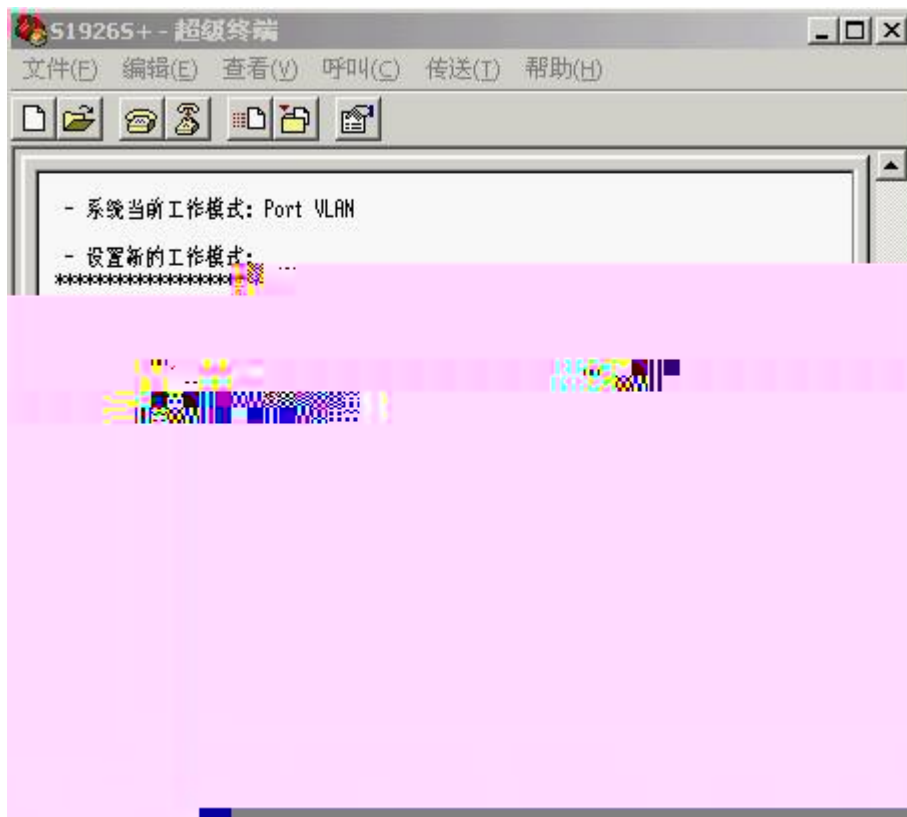
4 (S)



5 (W)



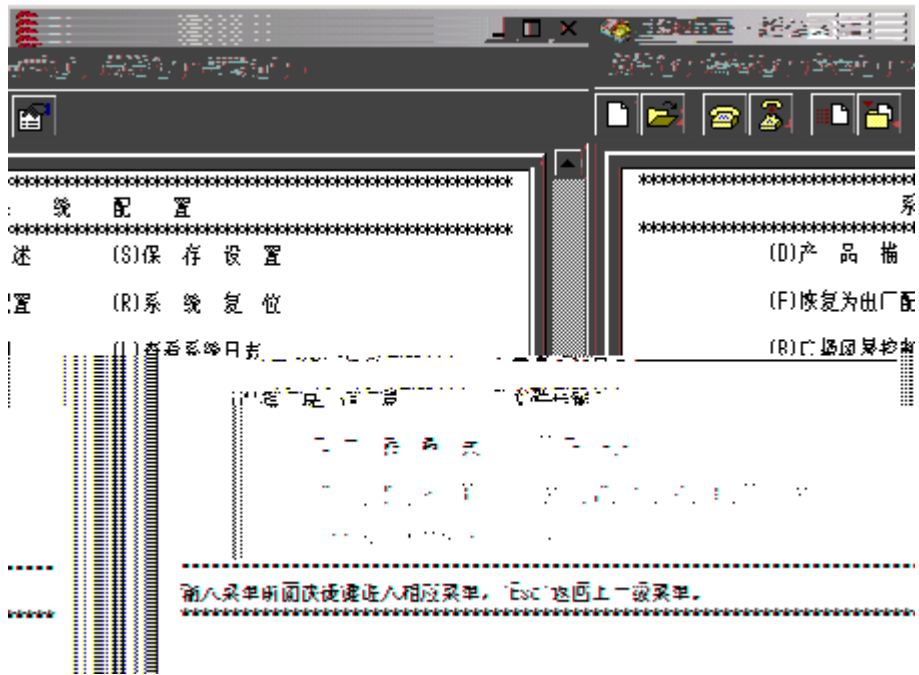
6 2 Tag VLAN



. ESC
VLAN 3 1-24 VLAN 3 2 ,
VLAN TAG CISCO TRUNK
UNTAG (CISCO access)

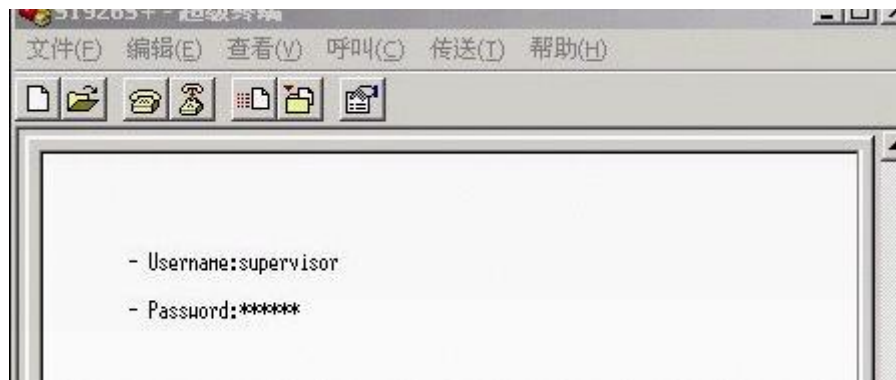
5	VLAN	1-24	1-24	vrrp
---	------	------	------	------

11 S

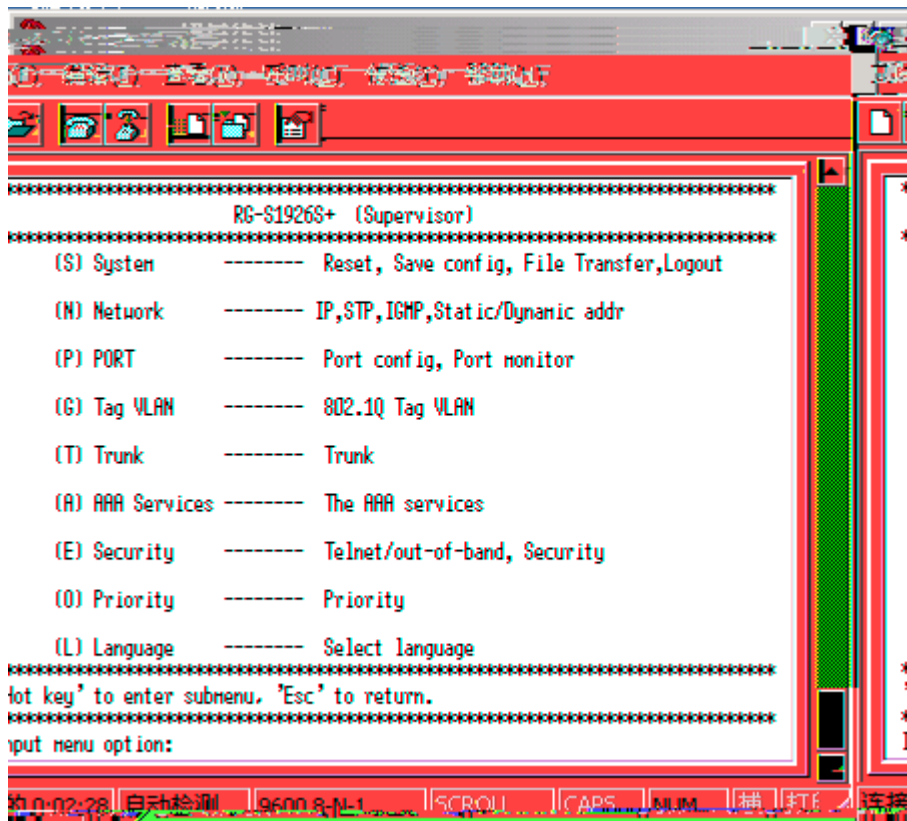


12 S

S1926S+ IP

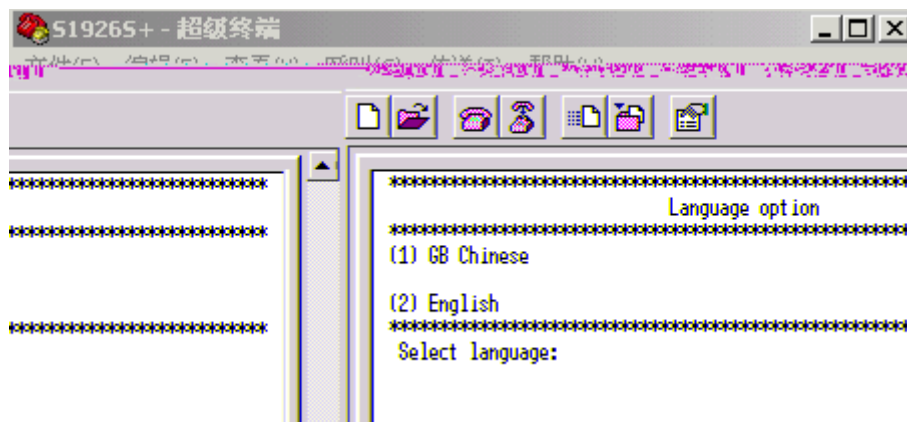


1 /



2

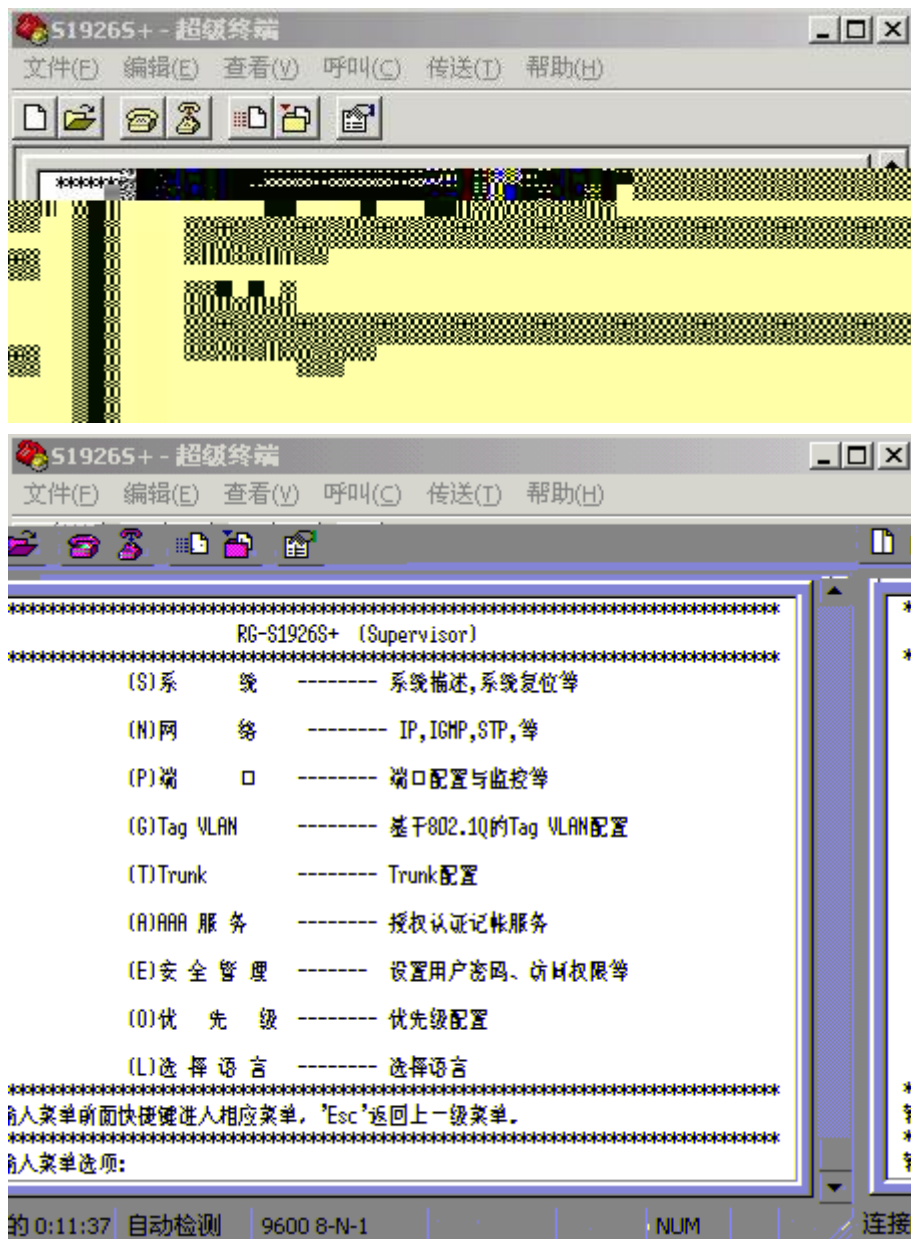
L



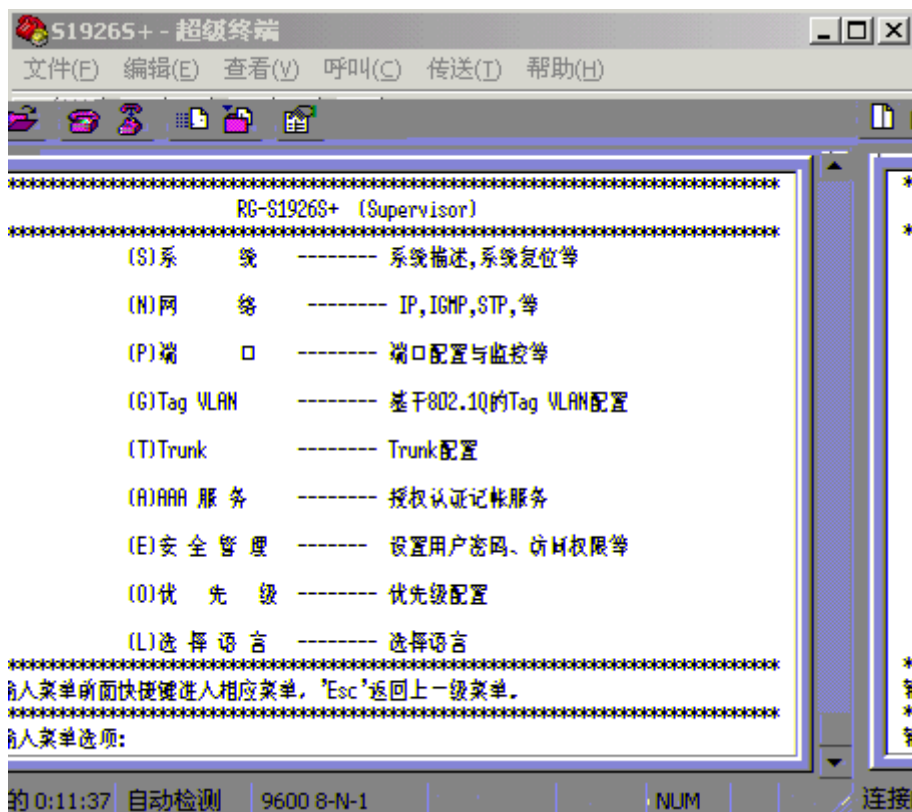
3

GB Chinese

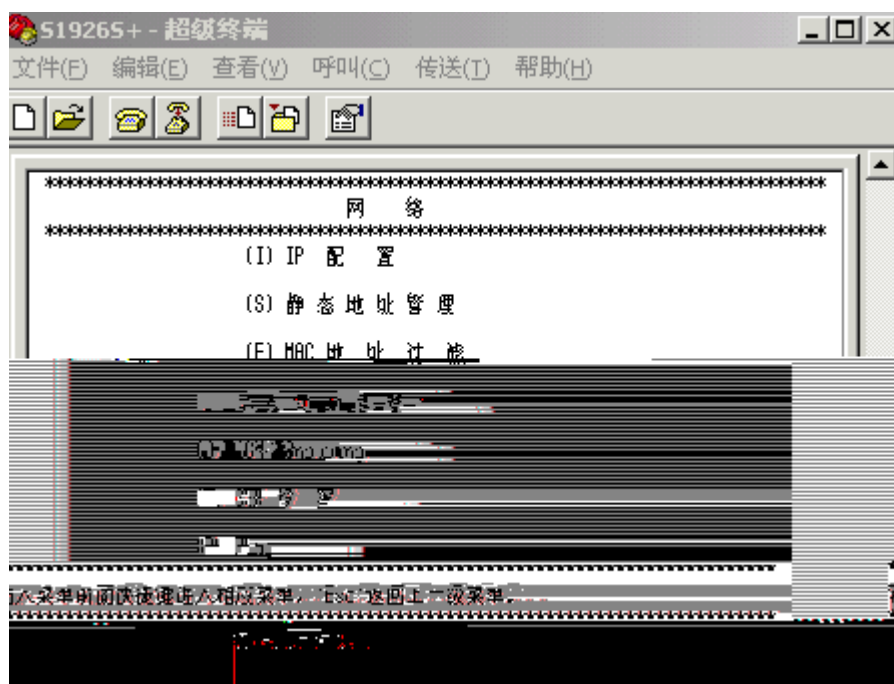
1



IP



1 N



2 I IP

