

SATA
POWER

11

11

-9/0=0»

copyright © 2021



<http://www.ruijie.com.cn/>

<http://webchat.ruijie.com.cn>

<http://www.ruijie.com.cn/service.aspx>

7× 24

4008-111-000

<http://bbs.ruijie.com.cn/portal.php>

<http://www.ruijie.com.cn/service/know.aspx>

4008111000@ruijie.com.cn

1

RG-NBS5710-E

00S

RG-NBS5710-E

RG-

	AC 100-240VAC 90-264VAC 50/60Hz 0.6A HVDC 192-290VDC 0.5-0.1A
	3.5mA
EEE	
POE	
	m24W
	0°C ~ 50°C
	-40°C ~ 70°C
	10% ~ 90% RH
	5% ~ 95% RH
EMC	GB/T 9254.1
	GB 4943.1
× × mm	440×268×43.6
kg	m3.5KG

RG-NBS5710-24GT4SFP-E

10/100/1000Base-T

4 SFP

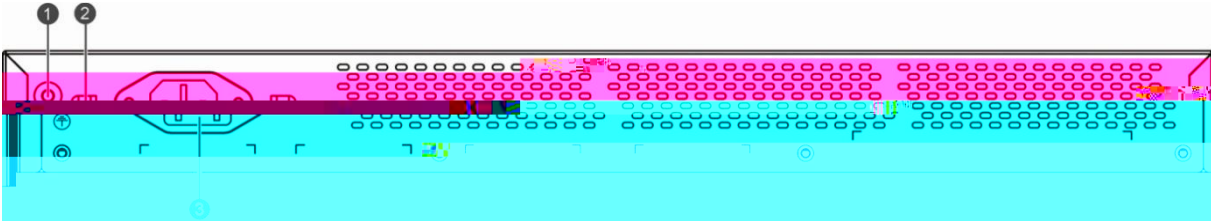
1 RJ45

Console

24

RJ45

1-1 RG-NBS5710-24GT4SFP-E



1	3
2	

RG-NBS5710-24GT4SFP-E

AC

100 240VAC,50/60Hz

90 264VAC,47Hz~63Hz

50/60Hz

0.6A

10A

HVDC

192-290VDC

0.5-0.1A

RG-NBS5710-24GT4SFP-E

10cm

3

1U 44.45mm

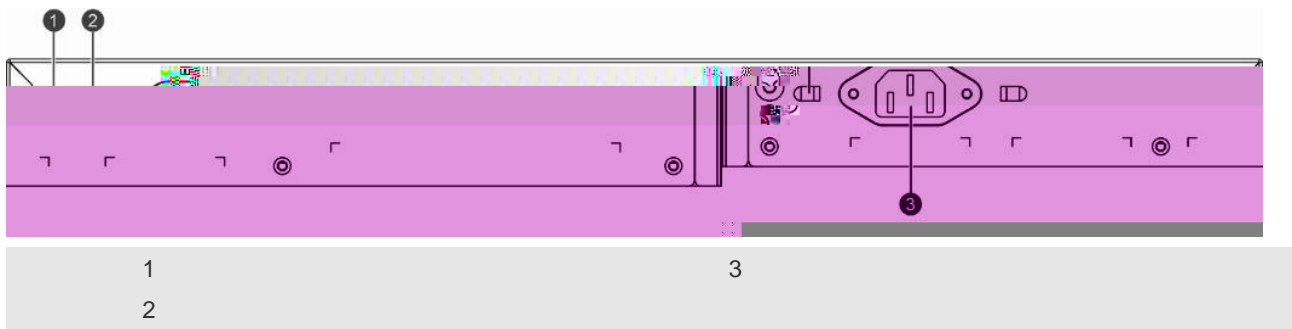
	Status		
			1) 2)
10/100/1000M	1~24		Link
			1000M Link Up
			10M/100M Link Up

SFP	25F~28F		Link
			Link Up

1.2 RG-NBS5710-48GT4SFP-E

 RG-NBS5710-48GT4SFP-E

1-6 RG-NBS5710-48GT4SFP-E V1.00



RG-NBS5710-48GT4SFP-E

AC

100 240VAC,50/60Hz

90 264VAC,47Hz~63Hz

50/60Hz

1.5A

10A

HVDC

154-308VDC

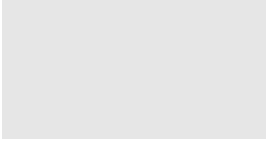
1.25-0.5A

RG-NBS5710-48GT4SFP-E

10cm

3

1-7 RG-NBS5710-48GT4SFP-E



SFP

EMC	GB/T 9254.1 EN 300 386 EN 61000-3-2 EN 61000-3-3 EN 61000-4-2 EN 61000-4-3 EN 61000-4-4 EN 61000-4-5 EN 61000-4-6 EN 61000-4-11 EN 55032 EN 55035 EN 61000-4-8
	GB 4943.1 EN 62368-1 IEC 62368-1

RJ45 PoE	1~24		PoE
			PoE
			PoE
SFP	25F-28F		Link
			Link Up

POE	RJ45	POE	30W	POE
	POE	POE	POE	
	PoE	POE	<57W	<1700W
	0°C	50°C		
	-40°C	70°C		
	10%	90% RH		
	5%	90% RH		
EMC	GB/T 9254.1			
	GB 4943.1			
x x mm	440x 360x44	RG-PA1150P-F		
kg	6.8			

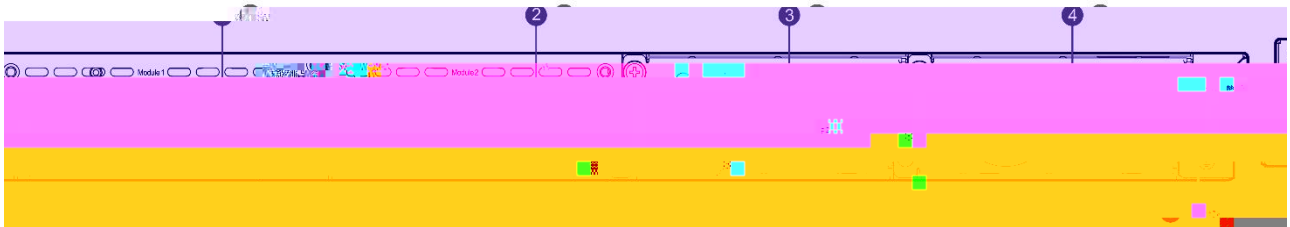
1-13 RG-NBS5710-48GT2XS-E-P



1		8	
2	1	9	LED
3	2	10	Console
4	1	11	USB Reserved
5	2	12	10/100/1000Base-T
6	LED	13	1000Base-X SFP
7		14	SFP+

LED	POE	2
-----	-----	---

1-14 RG-NBS5710-48GT2XS-E-P



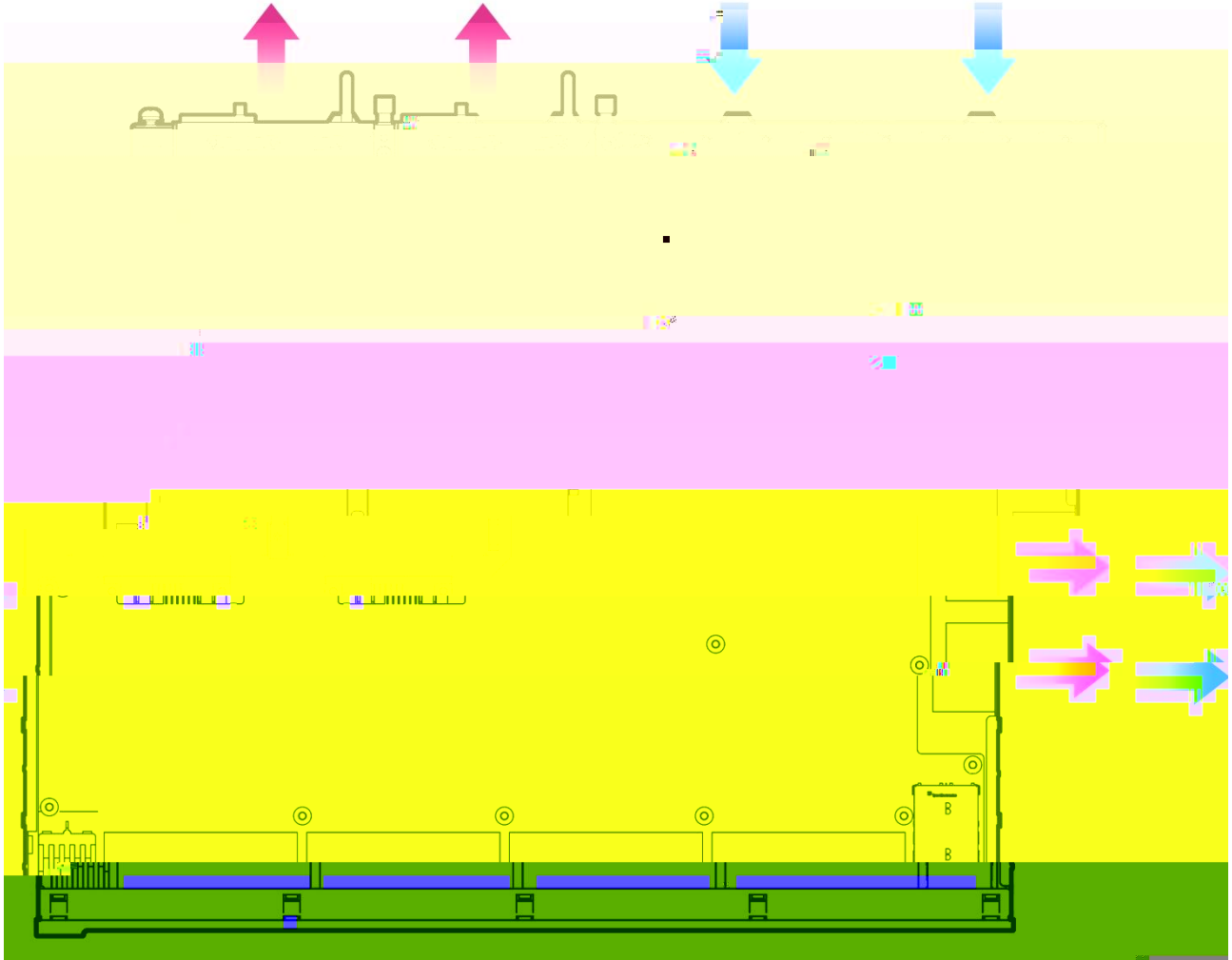
1	1	4	2
2	2	5	
3	1		

RG-NBS5710-48GT2XS-E-P

	RG-M5000E-AC500P	RG-M5000E-AC500P HVDC
	100~240VAC~ 50/60Hz	240VDC
	90~264VAC~ 50/60Hz	192~290VDC
	370W POE	POE 740W

	1+1
	54V -57~-60V 12V 13.4~16V
	54V 8~10A 12V

1-15



	Status		
			5.2
	M1/M2		
	PWR1/PWR2		
			AC

LED	LED Mode		PoE
1000Mbps RJ-45	1-48		Link
			1000M Link Up
			1000M
			100/10M Link Up
			100/10M
RJ45 PoE	1~48		PoE
			PoE
			PoE
1000Mbps SFP	47F-48F		Link
			1000M Link Up
			1000M

2

2.1

RG-NBS5710-E

2.1.1

2.1.2

2.1.3

15mA

15mA

/2>

30mA

30mA

2

30mA

2

30mA

1

2.1.4

PE

2.1.5

RG-NBS5710-E

I

2.2.1

RG-NBS5710-E

10cm

3

2.2.2

RG-NBS5710-E

0°C-50°C	10%-90%

1.5m

0.4m

2.2.3

0.5µ m	/ m ³	3.5× 10 ⁶
5µ m	/ m ³	3× 10 ⁴

	(mg/m ³)	(mg/m ³)
--	----------------------	----------------------

2.2.4

TN

PE

2.2.5

RG-NBS5710-E



1 16AWG

3

1

16AWG



1 RG-NBS5710-E

1

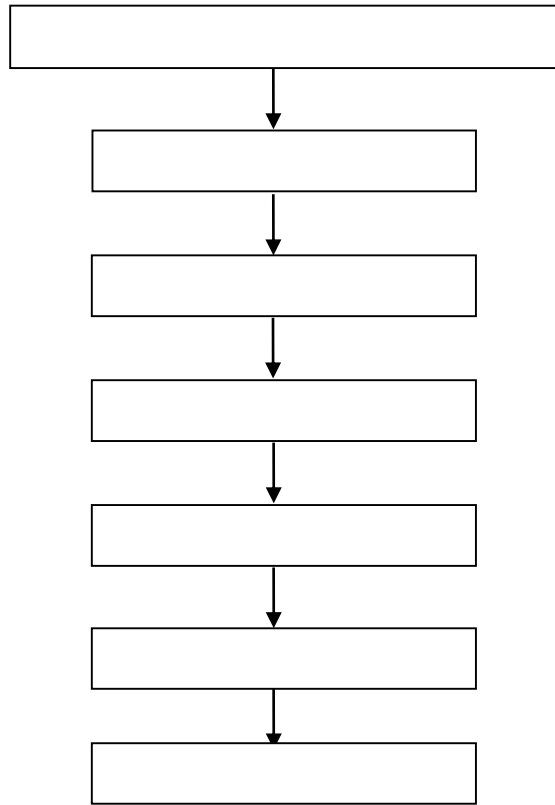
2-1



2-1 RG-

3

3.1



3.2

3.3 RG-NBS5710-E

RG-NBS5710-E

10

RG-NBS5710-E

3.3.1

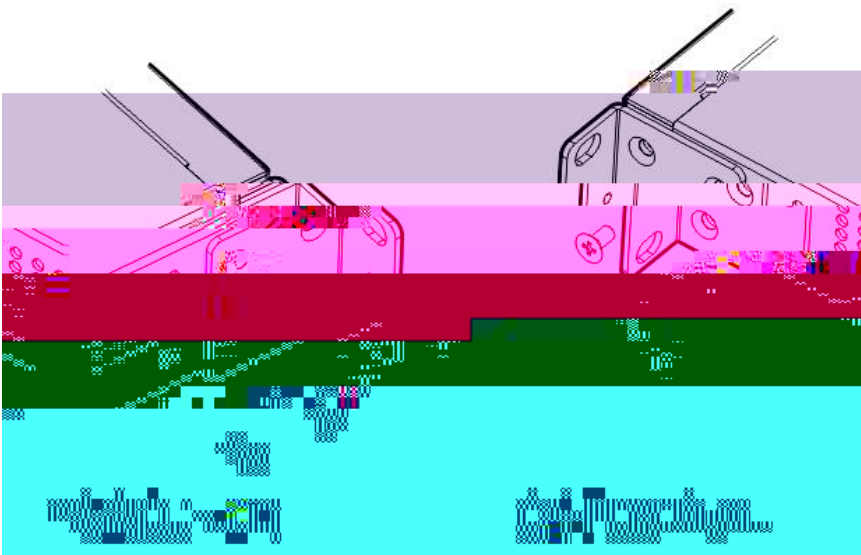
RG-NBS5710-E

EIA

19

3-1

3-1



3-2

M6

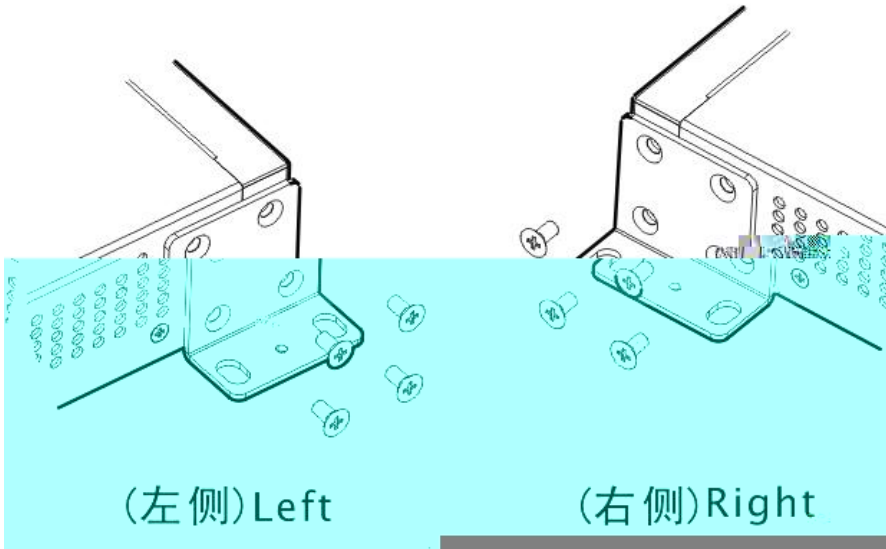
3-3

3-2

3-3

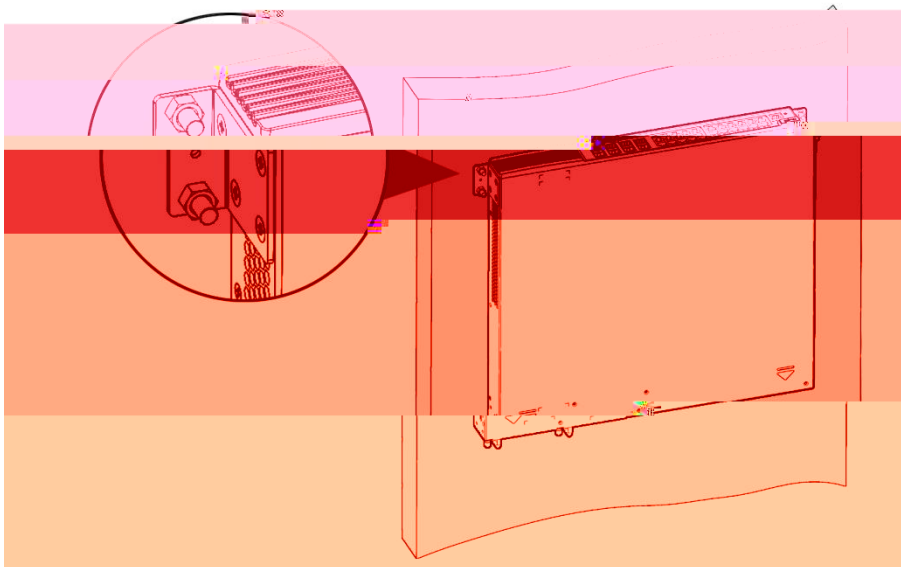
3.3.2

RG-NBS5710-E



3-5

3-5



3.3.3

19

4

3-6

3-6

3-7

3-7



3.4

RG-NBS5710-E



3.7



10

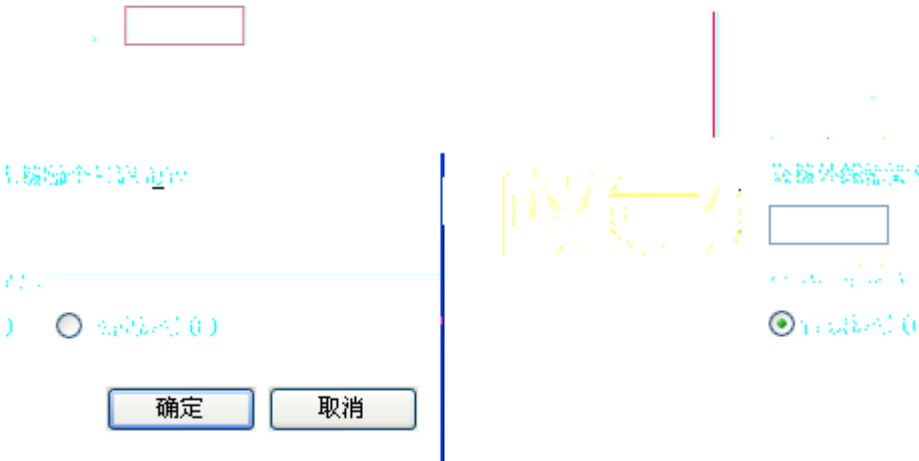
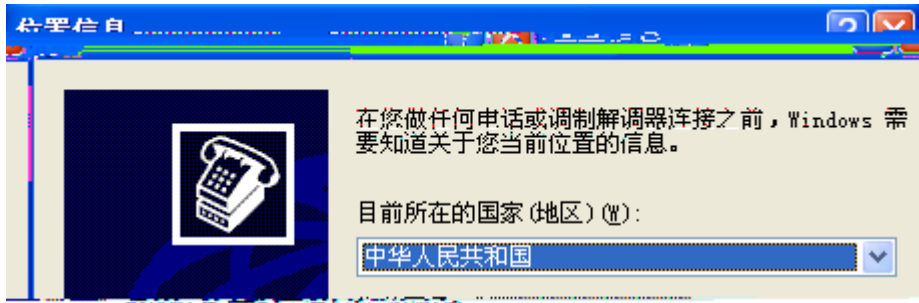
4

4.1

PC

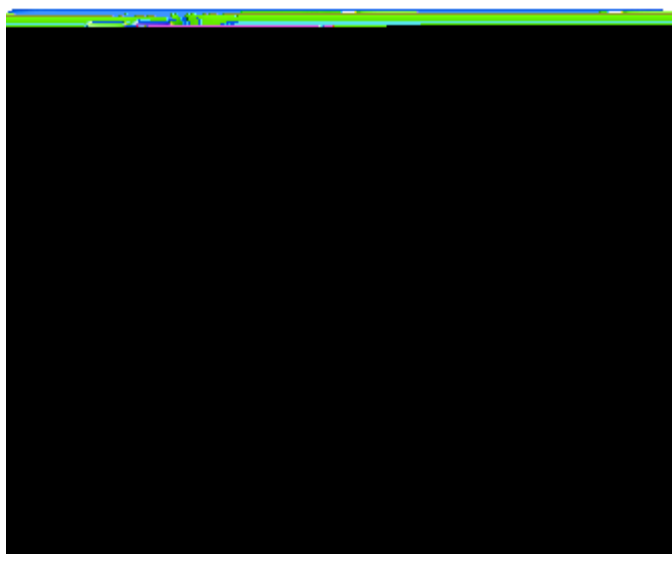
Console

4-1



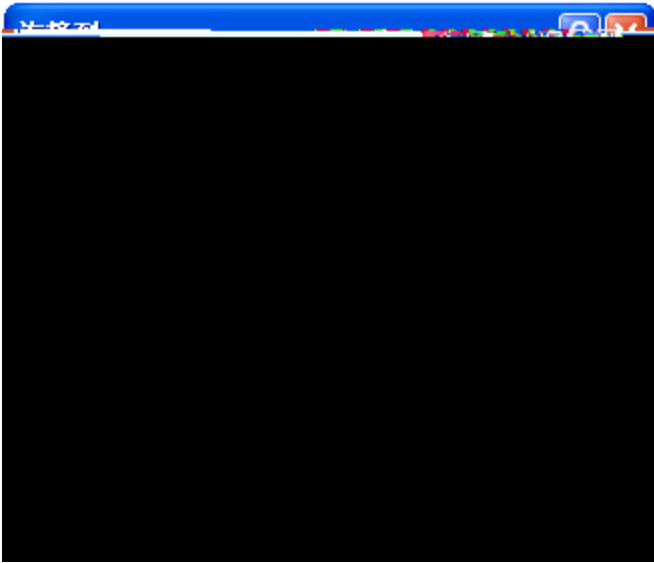
2) " " 4-3

4-3



3) < > 4-4

4-4



4) < > -5

8 1

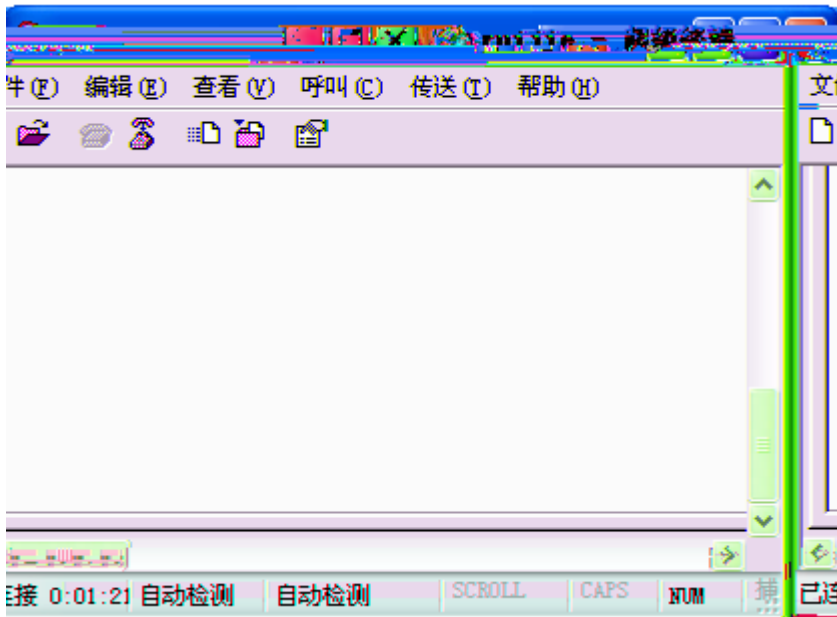
9600

4-5



5) < > 4-6

4-6



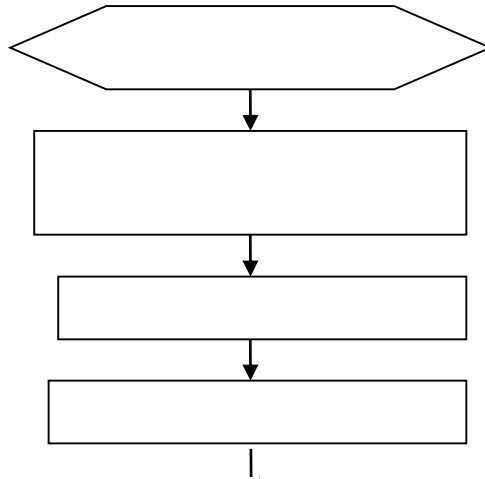
4.2

PC

console

5

5.1



5.2

status		
Status		

RJ45	100	

A

1000BASE-T/100BASE-TX/10BASE-T

1000BASE-T/100BASE-TX/10BASE-T

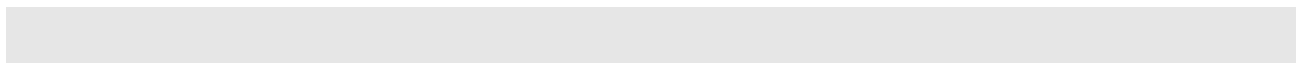
MDI/MDIX Crossover

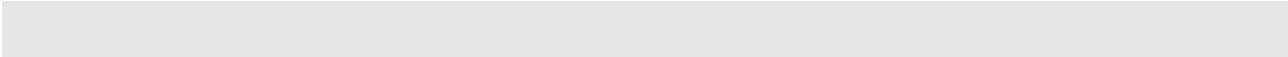
1000BASE-T	IEEE 802.3ab		100-ohm 5	5	UTP	STP
	STP	100				

1000BASE-T	4		4	1000BASE-T
------------	---	--	---	------------

A-1

A-1 1000BASE-T





SwitchSwitch		Switch	Switch
1 IRD +	1 OTD +	1 IRD +	1OTD +
2 IRD -	2 OTD -	2 IRD -	



B Mini-GBIC SFP+

GBIC-GT () SFP SFP+ SFP Mini-GBIC SFP+ SFP -- Mini-

B-1 Mini-GBIC SFP

SFP	(nm)		DDM (Yes/No)	
-----	------	--	--------------	--

B-2 SFP

	1000Base-T SFP	DDM(Yes/No)
1000Base-T	Mini-GBIC-GT	No

B-3 SFP

SFP			(um)	
MINI-GBIC-SX-MM850	LC		50/125	500m
SFP-MM850	LC		50/125	500m
GE-SX-MM850	LC		50/125	500m



B-4 2.5G SFP

			(M)	(Gb/s)	DDM (Yes/No)
GE-SFP-STACK1.6M		SFP	1.6	3.125	No

SFP

B-5 BIDI

/	
/500m	GE-SFP-SX-SM1310-BIDI GE-SFP-SX-SM1550-BIDI
/20km	GE-SFP-LX20-SM1310-BIDI GE-SFP-LX20-SM1550-BIDI
/40km	GE

XG-SFP-LR-SM1330-BIDI

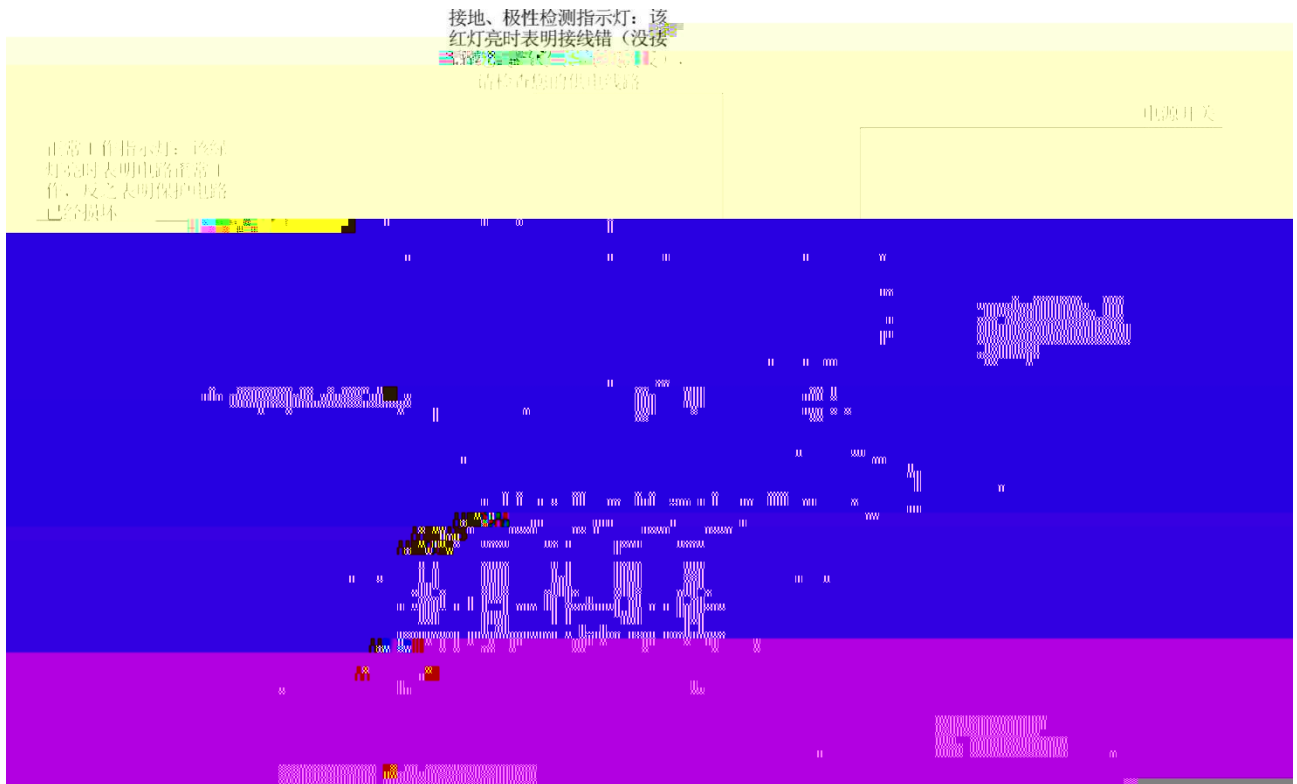
1330

No

-

C

C-1



PE

PE

PE

1)

2)

D

RG-NBS5710-E

19

7

5

7

10

SFP+

5

10

25

20

10

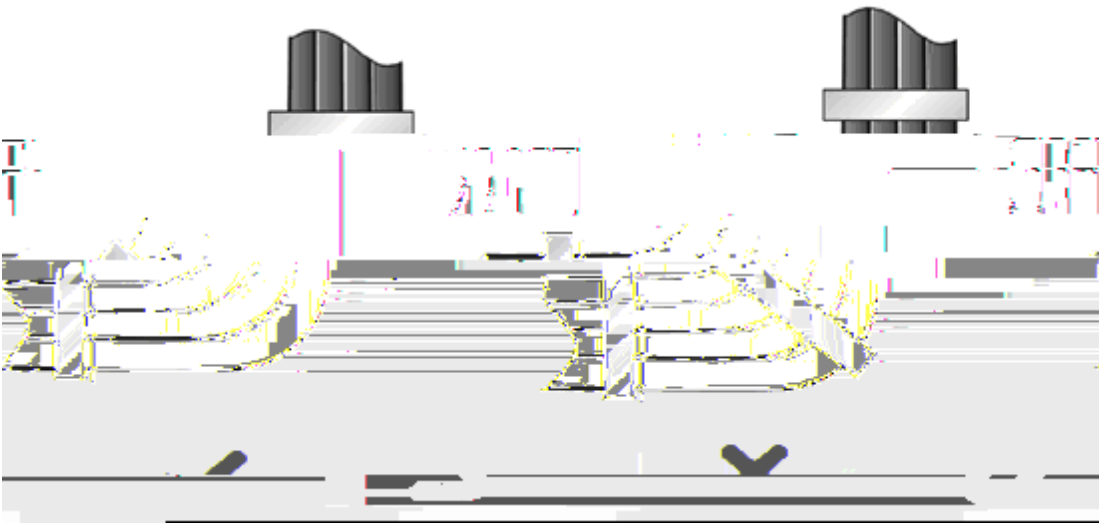
D-1

D-1

30mm

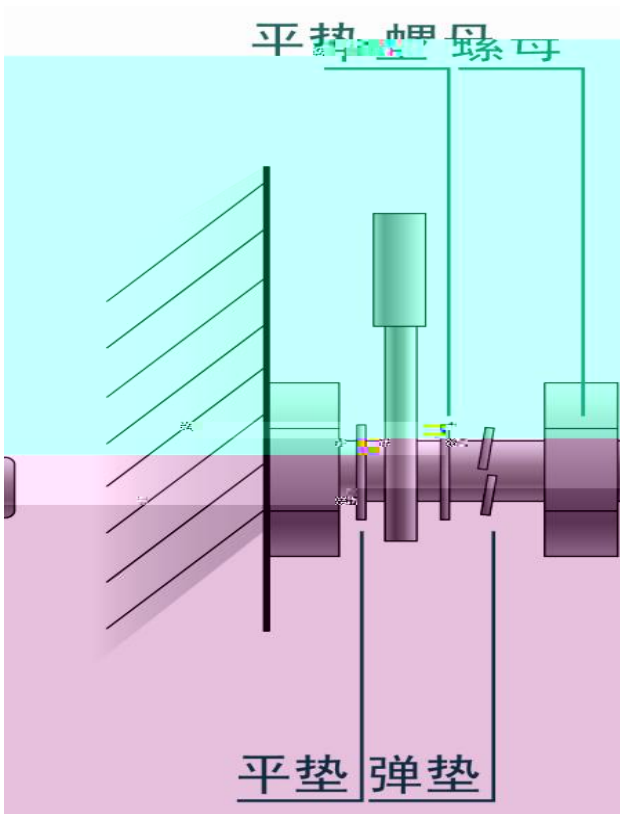
D-2

D-3



D-4

D-4



mm	mm
10	80~150
10~30	150~200
30	200~300

E

3.7km

5km
2km