

«<sup>^</sup>0% -9

7A4

y ï

UV\_XOMNŹ iHâ

• ' Ñ f

copyright © 2022 K@§5

+%s,07sX

Q@§5,MAEPEXG6FG>PÃ  
iRñ+B@B@0Ã6C,GpCÄ

Ø W

OBR Ø +XK@ \$5•5x ñ È\ {¼ j Ø È ¶B 4ö,´ .œ &'>ö 7 ‡ Ä

ÿ

\ { ¼ k?± û4ý ¶ x ñ X Ï7- : ¼(TM\*6 :,´ 0 È(© W È È ¶ 1>ö!•PÔ Ã uLì ÂL” Ã° \_?ö I È ú+e56 ¼F Ö ~,´?ö I ¼  
+X ö I ÄF2+X ¾ # ) :F µ éF >| ¶ @ D X 1>ö ¼5\$ Ô5•5 .œ & éM' § 9 0 Ê4ÿP¼,´+X g Ä< & w ÊB !n x ñ ,´+X g'Ï.  
-( £ \_B ¼ ² % Ä

ÿ

- „ K@\$5È1Ö <http://www.ruijie.com.cn/>
- „ K@\$57-Ö <http://ocs.ruijie.com>
- „ K@\$5È1Ä\_1(xÖ <http://www.ruijie.com.cn/fw/>
- „ 7x24 &\_ÄÖ 4008-111-000
- „ K@\$5Ö@§i@
- „ hÄNE3RÖ <http://www.ruijie.com.cn/fw/wt/>
- „ K@\$5° \_\_1>Ö1Ö [4008111000@ruijie.com.cn](mailto:4008111000@ruijie.com.cn)

gá

\ - G÷+X 4/ýGÄ- 7 •>~j X ý ÖEE÷0; ] ÄB (© [# ?,' é ÈF È 7 ,´ ? y²; Ö

---

a EAGÈÈ,Ä>  
 B\*D/ÄÖÄFE>Ö{  
 ; /Ä7Ö>Ö{

---





- 7 Reset , : RJ45 b
- 8 7 : LAN/PoE 5+
- 9 L, < DC48V

### 1.3 RG-AP820-A Ce B ? y f

#### ,V Q ? ; Ö

LNÄ	g	(æ
ü	Ze JEEÄ	&
3Hz	3+5ME0;	5/8t
ü	3+5ME0k0z	5/8p
3Hz	AP 3+5MEZG- Link down	40t
ü	3+5ME*0ü	8p
3Hz	X,V Qe	8t
ü	hE (hE+XgÖ	hP
3Hz	hE (hE+XgÖ	8t
2Hz	AP EXE AP	40t
K^	.9%	A7Gý
	K9W%	A5z

#### 7 QÖ

LNÄ	g	(æ
ü	Ze JEEÄ	&
3Hz	3+5ME0;	5/8t
ü	3+5ME0k0z	5/8p
3Hz	AP 3+5MEZG- Link down	40t
ü	hE+XgÖ	hP
3Hz	hE+XgÖ	8t
K^	.9%	A7Gý
	K9W%	A5z

RG-AP820-A 3+G4

---

Hz 1 D 3W 3Hz 1 D 3W

---

0

RG-AP820-A 3+G4 DC F2G F65 PoE E

---

a F8G M6G C.G F8G m6F8G M6GG.L)G

---

a ^ PoE M6G 1%? 802.3af M73

---

bC

RG-AP820-A G+X N/A

---

5.0 L\*8 J,FP>

---

## 2 G ø é Ô Ô

### 2.1 μ Ž `

RG-AP820-A 4UB1b,0Aä

A,0Aav%730),0

### 2.2 G μ

„ QHÖDÖS(6Ö+e.Ä/ME1Ä+e Äe1Äe0cM7Vfjš  
,)Ä AP A7,072Xfg,)Ä

„ >B(ÉAKD/0F,0Ä7D/0D/0N¾ 500m0A7  
0p ;Ä

„ U/XC000%0%0Mb1yE>A7>ÄF>0AA0J550FJA7,° \_  
0,8630I00X07Ä0U1y3PE91V8FJA70)0A0pÄ

a B-0ü B\*D cF,0F>A0D0

### 2.3 ? 6 μ

„ XA7>0, ÄNÁq+07Ä

„ 0+0FB0p9+e09+e00056Ä

### 2.4 Ô ) μ

„ F>|eD0F0X,03Ä09-(0Ct1Ä

„ B40EVX%0E,07 \_V%0yÄ

„ X>F0X0WU+e0p,0F0E7Y0Ä

„ M0E+e0000

„ B07nX%000A7Ä

„ AP 00+e0Ä7,050bM050+X007--(DFÄ

„ F/00 ME0 0N0W+e0,070y)4A7Ä

a C090!0k0%73K0R+k11EL000EVFH0\*00

a -\*ÜFPE0,0000Q0Ä+k%73B\*00

## 2.5 G a © é L -

RG-AP820-A

### 2.5.1 G L -

- „ mGy 1L) FJN 3+5Ä
- „ A520(\*É-O\_Á RG-AP820-A 15t8GÄ
- „ A57(F28 RG-AP820-A 1990DL7>5E0  
\*148A 2m .,5ÄF(Ä

### 2.5.2 ù • L -

RG-AP820-A j8fEA7>ÄN+4290DLÉ

### 2.5.3 t ... x y ... L -

- j Añ RG-AP820-A h0X/0105\$000O44/80  
f,)EJ)A7FP@Ä
  - „ 4%00Q,)EFP@55H8EJ8%?e06+OjV7-FÄZ&8≈ 1y  
)BÄ
  - „ 4%00÷,)E5H(wJ6E×+OM%eÄ7:,+eDÄ
  - „ 400Q,)EjV8A7,MVWWW,L)-EOQ8J,E061FE0Ä
- RG-AP820-A A7))Ö

Ö	ÖÖ
-10èC-50èC	5%-95%

### 2.5.4 M Ó ... L -

& H)Aî7F>|\_ 0 W i ä Ä Ô µ& H:m X j f : È FP @M%+e hLt È-H Ž Ö&é Ö@ =8ÿ ÈT!\_ X Ô µ-( )\$- Ö • ~  
,´ õ á ; È \$ CFP @F /ýM%+e hLt È = v J i ý Aí 7 / - È6< D é CFP @FJ uLì Ä ) j o µ& H [Gÿ ú2Ä ´?±"r ² ;>- Ä

0W-\$ (- m)	0.5	1	3	5
0W/00 /00Ä	1.4x10 <sup>7</sup>	7x10 <sup>5</sup>	2.4x10 <sup>5</sup>	1.3x10 <sup>5</sup>

LBFÄ7p4,j0)0Dp[-Ä(OUi,´  
FE0Äb9DjV.F.ÄRWÄD1y,ÄBÄ

Df	Ä mg/m³Ä	0WÄ mg/m³Ä
c	0.2	1.5

.FR H <sub>2</sub> S	0.006	0.03
W <sup>^</sup> NO <sub>2</sub>	0.04	0.15
XD NH <sub>3</sub>	0.05	0.15
"D Cl <sub>2</sub>	0.01	0.3

## 2.5.5 EMI L -

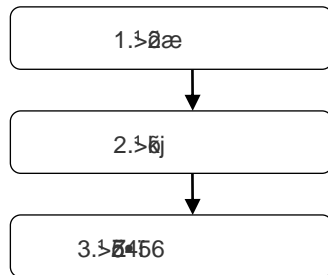
”

### 3 C | é G

RG-AP820-A 3+G AP

B-.

#### 3.1 G W 8



#### 3.2 G ø é \

RG-AP820-A >A7, >5A6EeC41lyF>A8A6: A6

- „ >4E0L%Ca Ä
- „ >4%CA7)Ä
- „ >4%CA7)+eÄ
- „ F9+X, +eÄCa+5);Ä
- „ >4%Ca A7)55GÄ
- „ >4%CA7)>59p,Ä
- „ )Eg,CÄ7E>B:A07\_V1V8CÄ

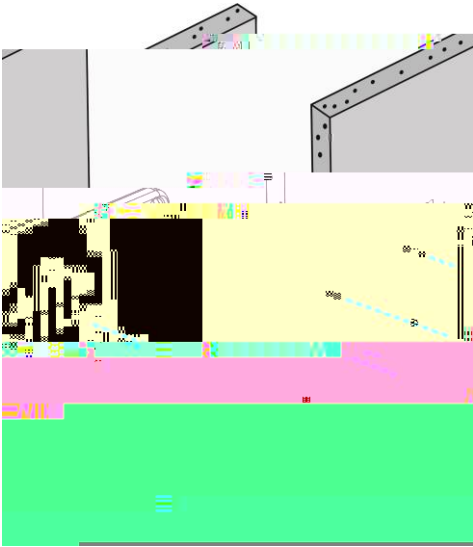
#### 3.3 G • é µ l ç 6 •

j Añ 4i AP hE-X/BFÄ©Ö

- „ A7>8A7EÄ
- „ B6A7n5EJNÄ
- „ BF6A7n5EÄ

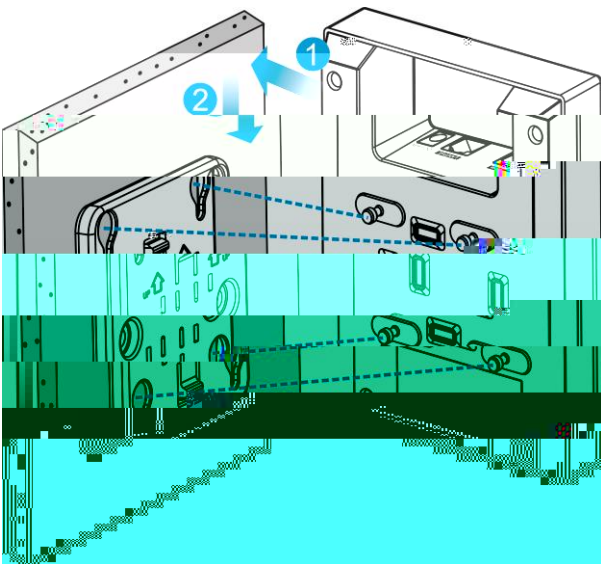




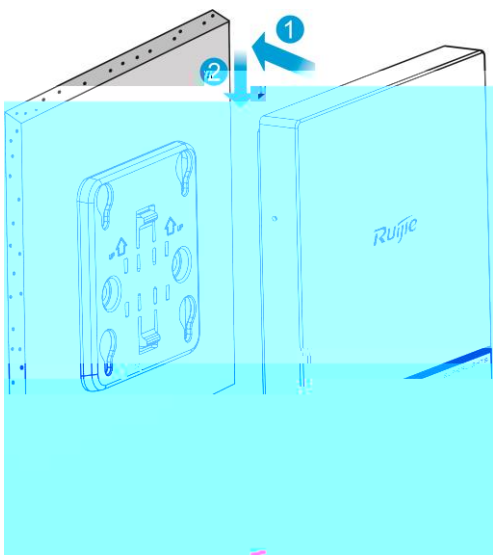


2) 6kj6ü,2jã

. 3-5 6 AP )äæ



a 08P--ç5#6



8>M67p

Ruijie logo S@>

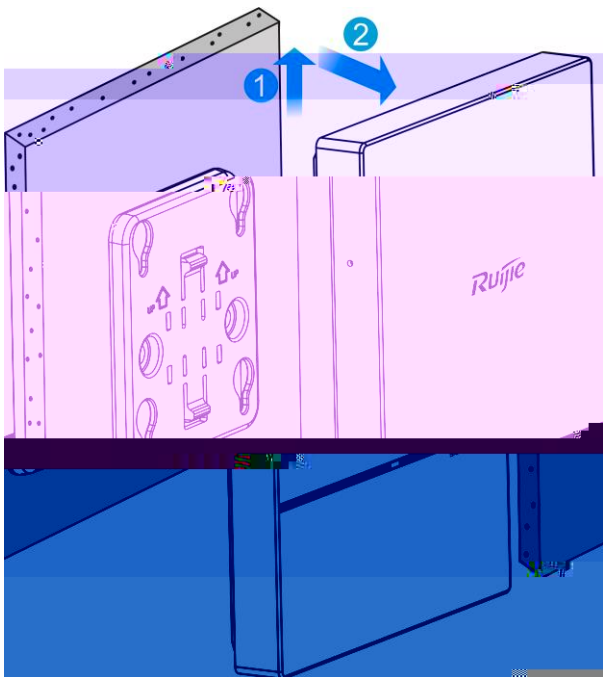
a >N8@,9GGA%B-B-5#>#B'

a >B-4#e>#FVFqD:s>

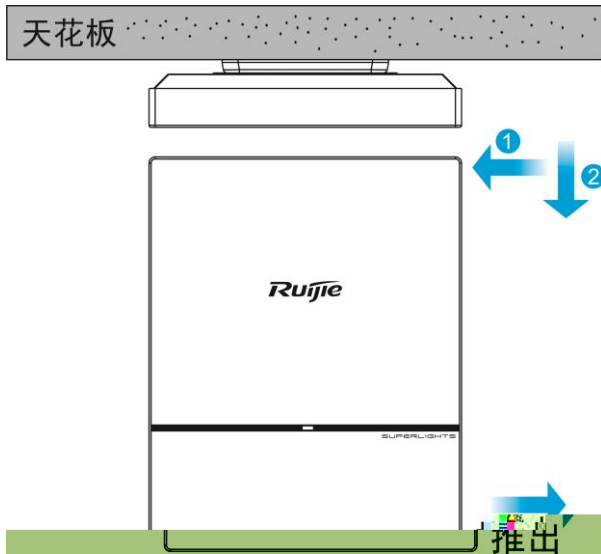
### 3.5 2 ý 2

1Á )#B+XkjT×Bp5;AÖ

. 3-7 6 AP ö



21;#pD(B(ÖkjT×Bp5;AÖ



### 3.6 安装

安装

AP, LAN/PoE AP\_1,64FW...

console	9600	8WPA	1#H	> M6/ AP F
---------	------	------	-----	------------

### 3.7 配置

配置

- v~+e56
- v~ü 54,64481\_FW)\_ (A
- v~54~ZWE456+X/PEW7-Ä

配置

- 654i6C88P8# LAN/PoE 1Ä
- 654i6884i-GÄ
- 64v~ÄWCdkjÄGyC-Ä

### 3.8 G d é ó Ó

#### 2 ó Ó

- „ .AÉGĚe\_V>jG)+e-iGĚ
- „ A7>5ĚL\_V7-Ě
- „ .AĚ+O0+ĚBĚ
- „ .AĚXjĚ9456\*Ěj:Ě

#### Ě ó

- „ .AĚ4>ĚGĚ
- „ .AĚ56v~Ě

#### Ě

- „ .AĚĚĚ8ĚV8Ě
- „ Ě+eĚkjĚĚĚĚ Ó AP ĚĚ

## 4 x ž • p

### 4.1 @ Ž ' ° Ê

FJE÷F2G} ~ F65PoE ěeĚ AP :+eÄ

@Ě

„ FJEE2GF65 PoE ěeĚ AP F>ěeFĚ0.ÄĈĚ8ĚV8Ě

„ FJE646+eĚĚ AP > AC -(FÄ

„ FJE÷ PC > AP bÄB3BĚ10# PC ¼ PoE ĚM08Ě

**98\* 9 Tf 1 0 0 1 293.81 54EMC /P <</MCID 34>> BDC BT /F1 9 Tf 1 0 0 1 248.45 5**

## 5 ñ 0 ç ò

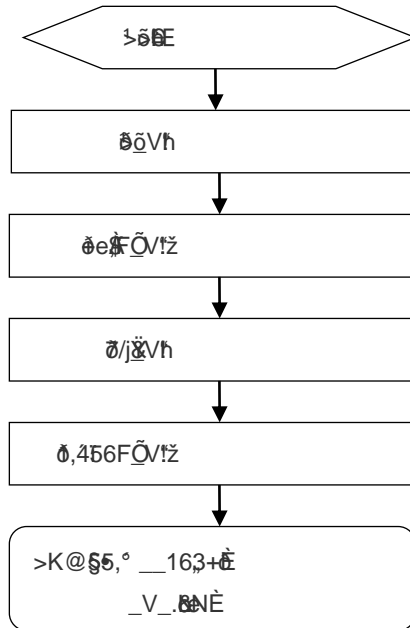
### 5.1 ñ 0 x

**Ce**

X RG-AP820

## 6 G é n N \ m Ó Â

### 6.1 G \ m - Ó ù Đ W 8



### 6.2 n N \ m Ó Â

Ô d ©4ÆCe H

„ PoE EeĐAŌ PoE FŌ01\_V8A%Că 802.11af EeĐ456\_VFFJhĂ  
 „ F2G EeĐ2G V92+eEĐ52G VhE

/XđgXđđ

B' ð Z5, ' 01 Aî 7 \_ V! " h CE đ > đ#{ Z5•4i56 \_ V% Că f } CEFO), '7- Ě Ě D.đAŌ4i56 \_ VF FJ! " h Ă

ĐĐ AP

- 1) đ7, Ee\_VhĂ
- 1) đ•K.ŌVhĂ
- 2) đ AP\_VGđđ

3) 0+0Xg01B301> AP ,D/Ä

CeGNE.

# ☛ A ä / — x ä / O ” y f

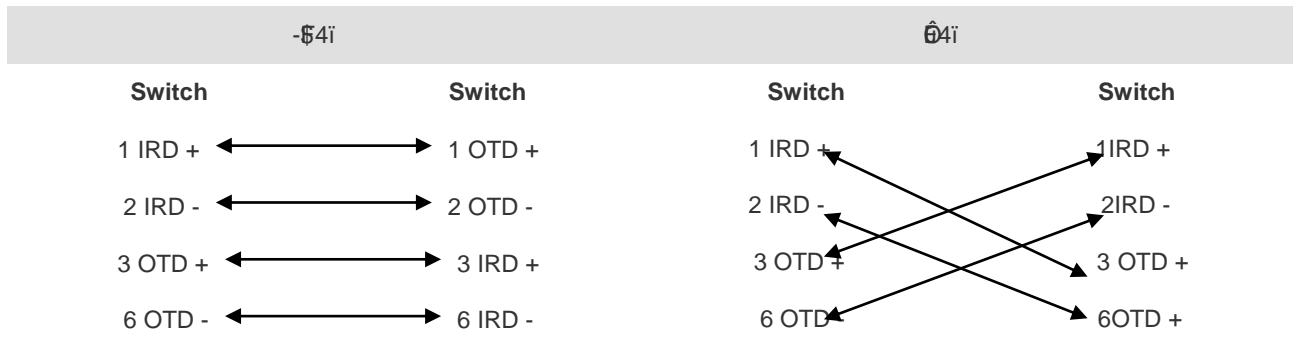
## 1000BASE-T/100BASE-TX/10BASE-T O L

1000BASE-T/100BASE-TX/10BASE-T \_\_19/FO)8F2Ä È \_1XF9/FO);8Ø MDI/MDIX Crossover  
,ÿ-Ä

1000BASE-T 1V8 IEEE 802.3ab 7EÄ56M0±X 100-ohm 5 2FCµ 5 2MÄ64i UTP Fm64i STPÈ  
DOK\_1 100 2FÖ/Ä

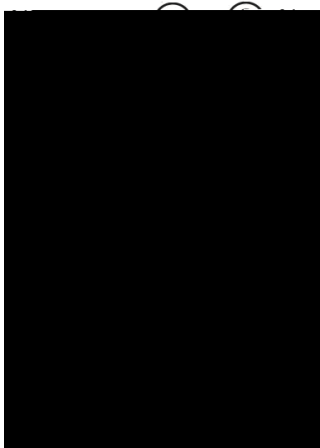
1000BASE-T 1+X 4 )4F>PEÄ10p9,´ 4 )4FÖ 1000BASE-T 1p+X;64iFÖ  
.p/jÖ

. A-1 1000BASE-4









” iÜ  
• ð

- „ )Ece410 LtF)+e56F>†ÉbX10ue56:x+OÄ
- „ B/+X8k48W\*01Ä
- „ 020AC4j+eÄ- @+e56Ee56p+e56\$#Ä
- „ 475~0>F>Ä

+e56•\$ ( mm )	5~L\$ ( mm )
10	80~150
10~30	150~200
30	200~300

- „ +.e56C4F65v-Ä
- „ )E,01€0D01yEG,€IŽ6MbX1€FMÄ



# ☞ D Ô | ï — P á y f

, Ⓜ DC48V 0.3A  
 , DC F2G

Ⓜ	F-\$	Ⓜ	Ⓜ
2.1mm	5.5mm	10mm	ⓂCO

