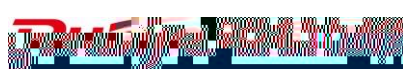




©2013



RGOS®

RGNOS®

<http://www.ruijie.com.cn/>
<http://webchat.ruijie.com.cn>
<http://www.ruijie.com.cn/service.aspx>
4008-111-000
<http://support.ruijie.com.cn>
service@ruijie.com.cn

7× 24



RG-WALL 1600-M5

RG-WALL 1600-M5

RG-WALL 1600-M5

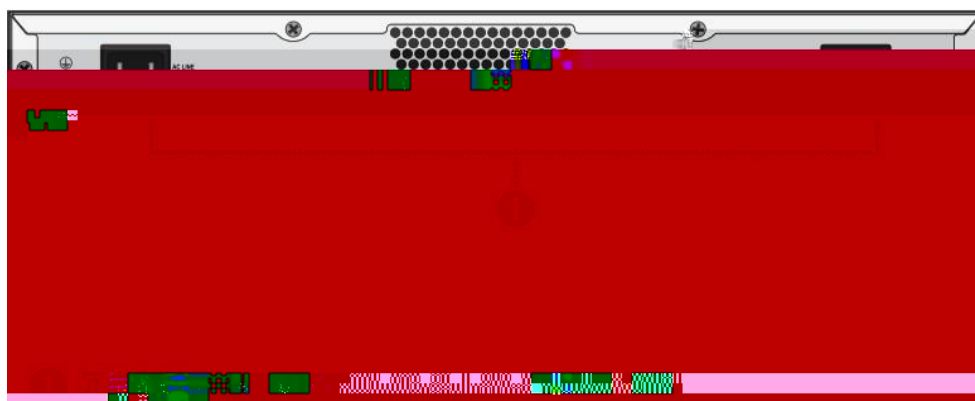
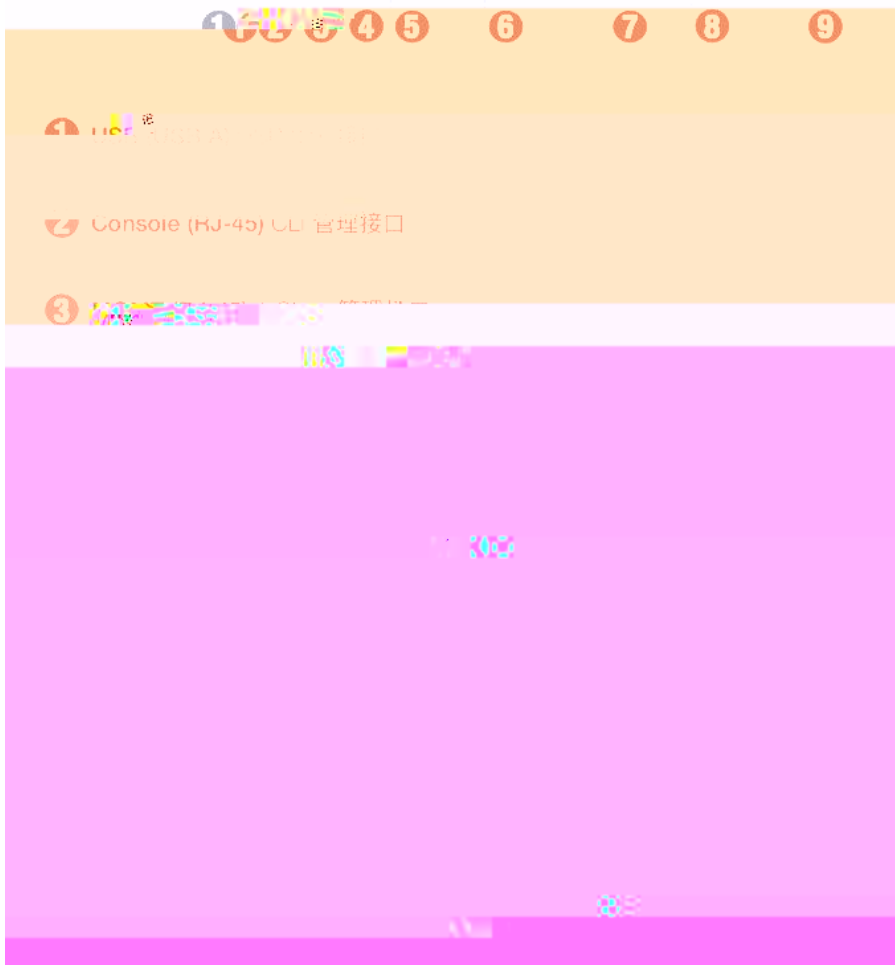
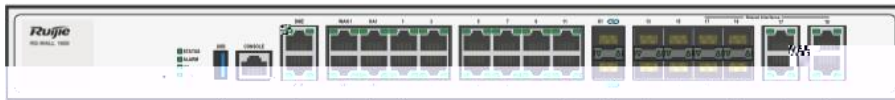
1.1 RG-WAI

	254 x 432 x 44 L * W * H mm 1RU
	100-240 VAC, 50-60 Hz
	110 V / 3 A, 220 V / 1.5 A
/	35.1W/38.7 W
	119.77 BTU/h

RG-WALL 1600-M5800E

1-2

1-2 RG-WALL 1600-M5800E



2

RG-WALL 1600-M5800E

2.1

2.1.1

2.1.2

2.1.3

r

2.2.3



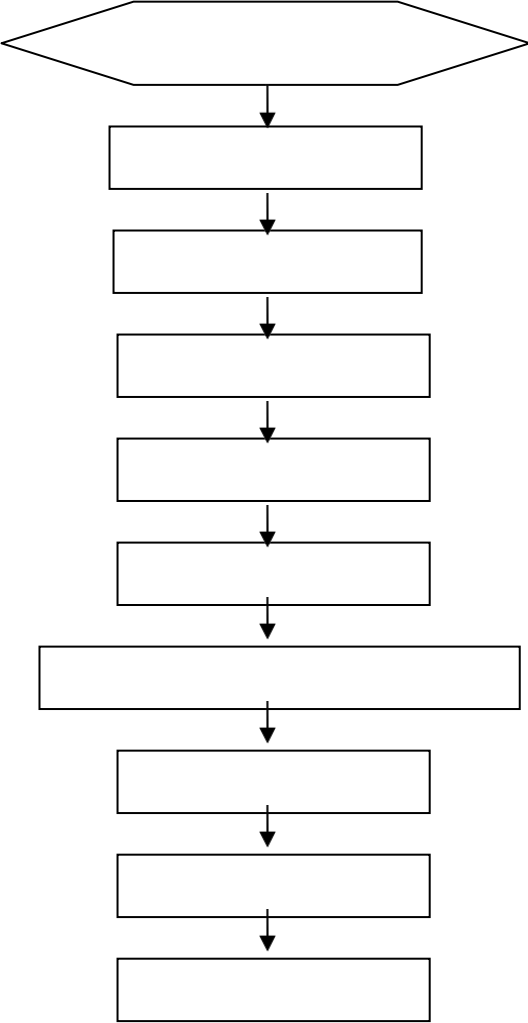
2.2.7 EMI



3

RG-WALL 1600-M5800E

3.1



3.2

RG-WALL 1600-M5800E

3.3

5mm

1.5cm

- 1)
- 2)
- 3)
- 4)

IEC60297 19
 1RU=44.45mm(1.75inch) 1RU 3-1

RU Rack Unit

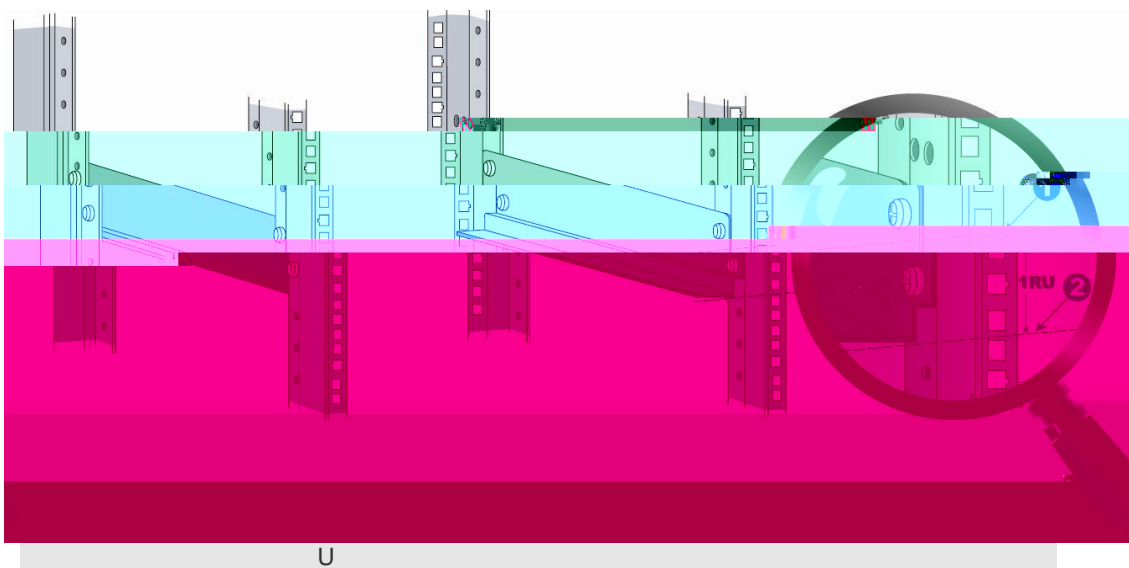
WALL1600-M5800E

RU

U

RG-

3-1



RG-WALL 1600-M5800E
M5800E

RG-WALL1600-

3.4

RG-WALL 1600-M5800E

10mm

- 1) RG-WALL 1600-M5800E
- 2) RG-WALL 1600-M5800E
- 3) RG-WALL 1600-M5800E RG-WALL 1600-M5800E

3.5

- 1)
- 2)
- 3) 16A
- 4)
- 5)

- 1)
- 2)

3

1.5

14AWG

3.6

- 1)
- 2)

- 1) RJ45
- 2) RJ45
- 3) RJ45
- 4)

3.7

- 1)
- 2)
- 3)

- 1)
- 2)
- 3)

3.8

- 1)
- 2)
- 3)
- 4)

- 1)
- 2)

- 1)
- 2)
- 3)

3.9

SFP

SFP

SFP

- 1)
- 2) SFP

3) 3-7

- 1.
2. SFP
- 3.
4. SFP
SFP

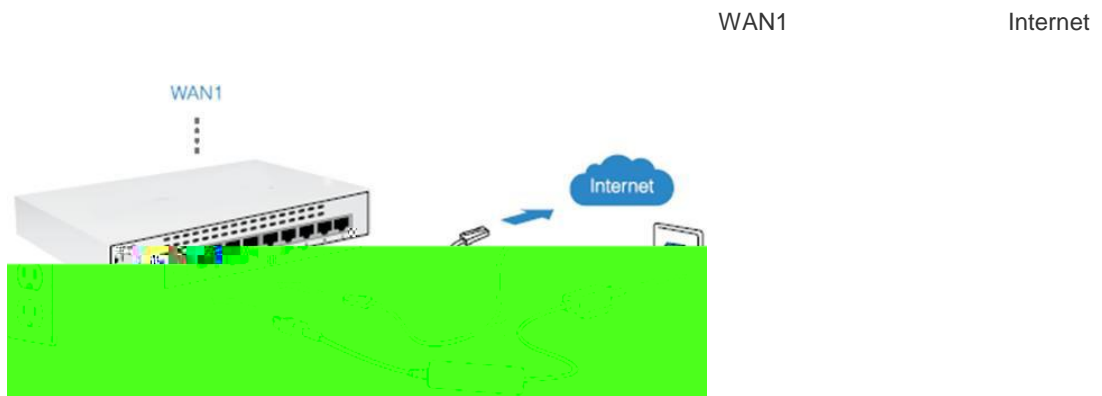
3-8 3-9 3-10 3-11 3-12 3-13 3-14 3-15 3-16 3-17 3-18 3-19 3-20 3-21 3-22 3-23 3-24 3-25 3-26 3-27 3-28 3-29 3-30 3-31 3-32 3-33 3-34 3-35 3-36 3-37 3-38 3-39 3-40 3-41 3-42 3-43 3-44 3-45 3-46 3-47 3-48 3-49 3-50 3-51 3-52 3-53 3-54 3-55 3-56 3-57 3-58 3-59 3-60 3-61 3-62 3-63 3-64 3-65 3-66 3-67 3-68 3-69 3-70 3-71 3-72 3-73 3-74 3-75 3-76 3-77 3-78 3-79 3-80 3-81 3-82 3-83 3-84 3-85 3-86 3-87 3-88 3-89 3-90 3-91 3-92 3-93 3-94 3-95 3-96 3-97 3-98 3-99 3-100

4

4.1

Console

4-1



4-1

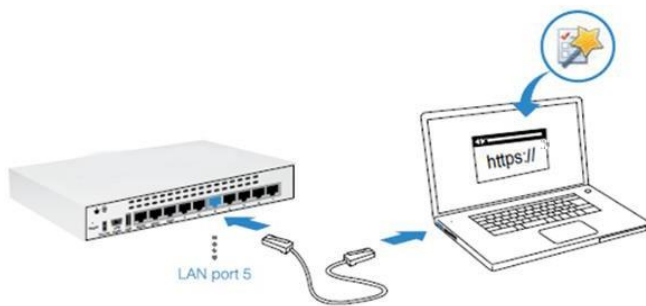
Web

admin

LAN

PC

IP : <https://192.168.1.99>



4-2

Console

PC

Console

a)

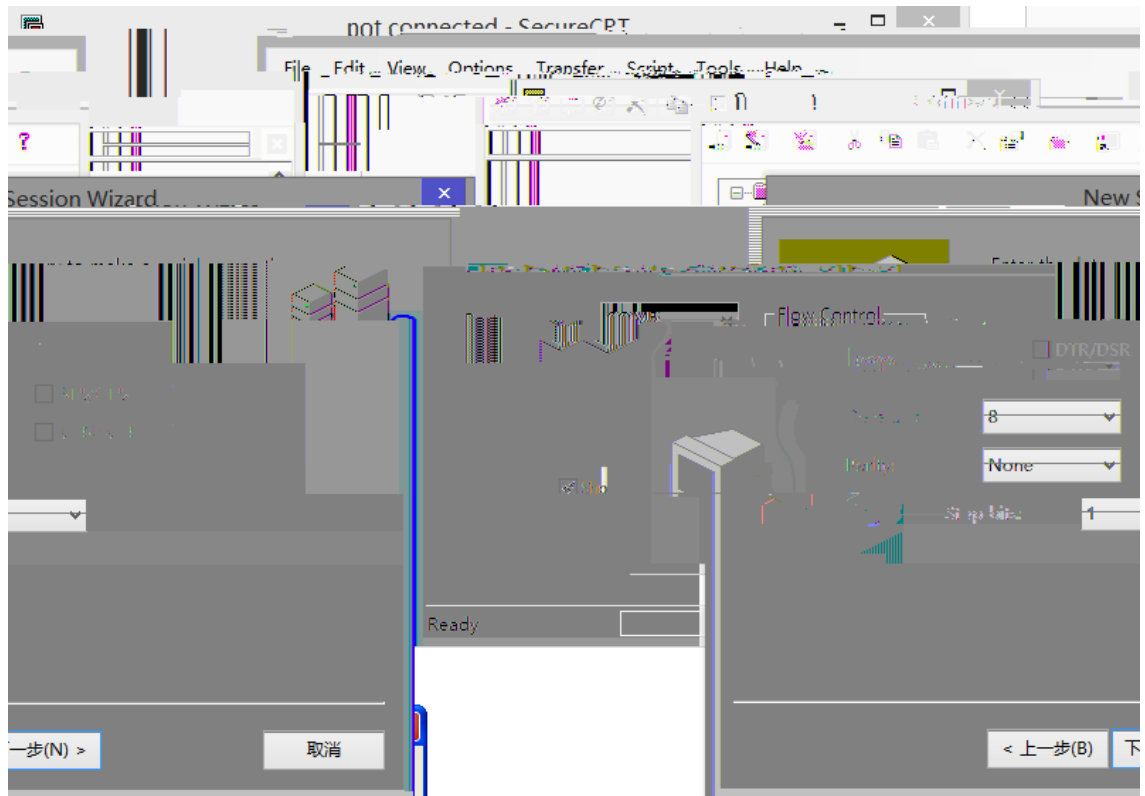
DB-9

PC

b)	RJ45			Console			
	1)	Console	USB	Console		Console	USB
	USB	PC					
	2)	PC		"			

b)

4-5



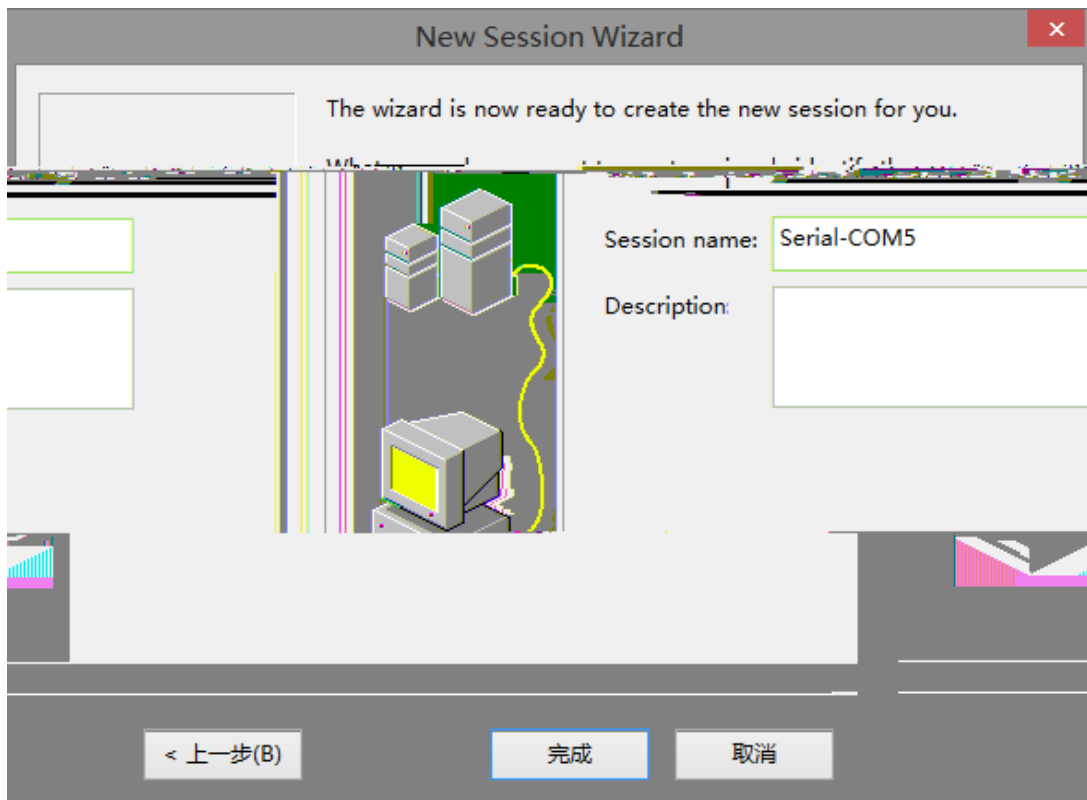
4-5

c)

" "

< >

4-6

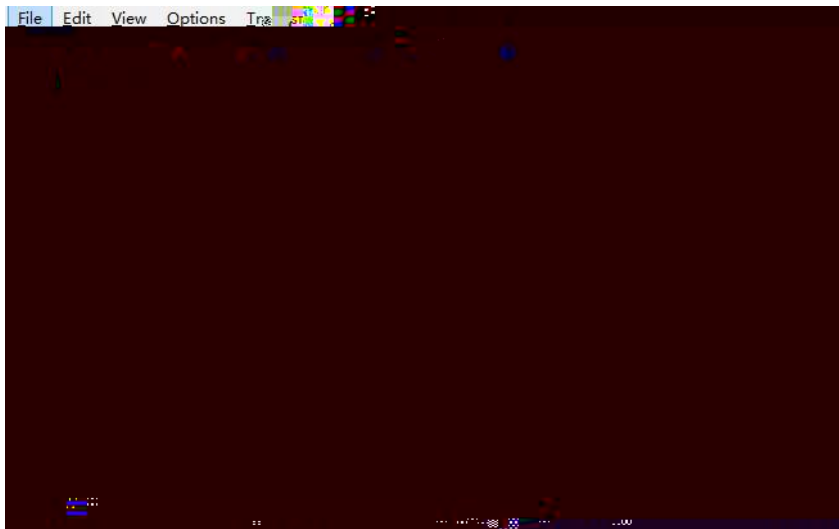


4-6

d)

< >

4-7



4-7

4.2

1)

2)

3)

4)

PC

1)

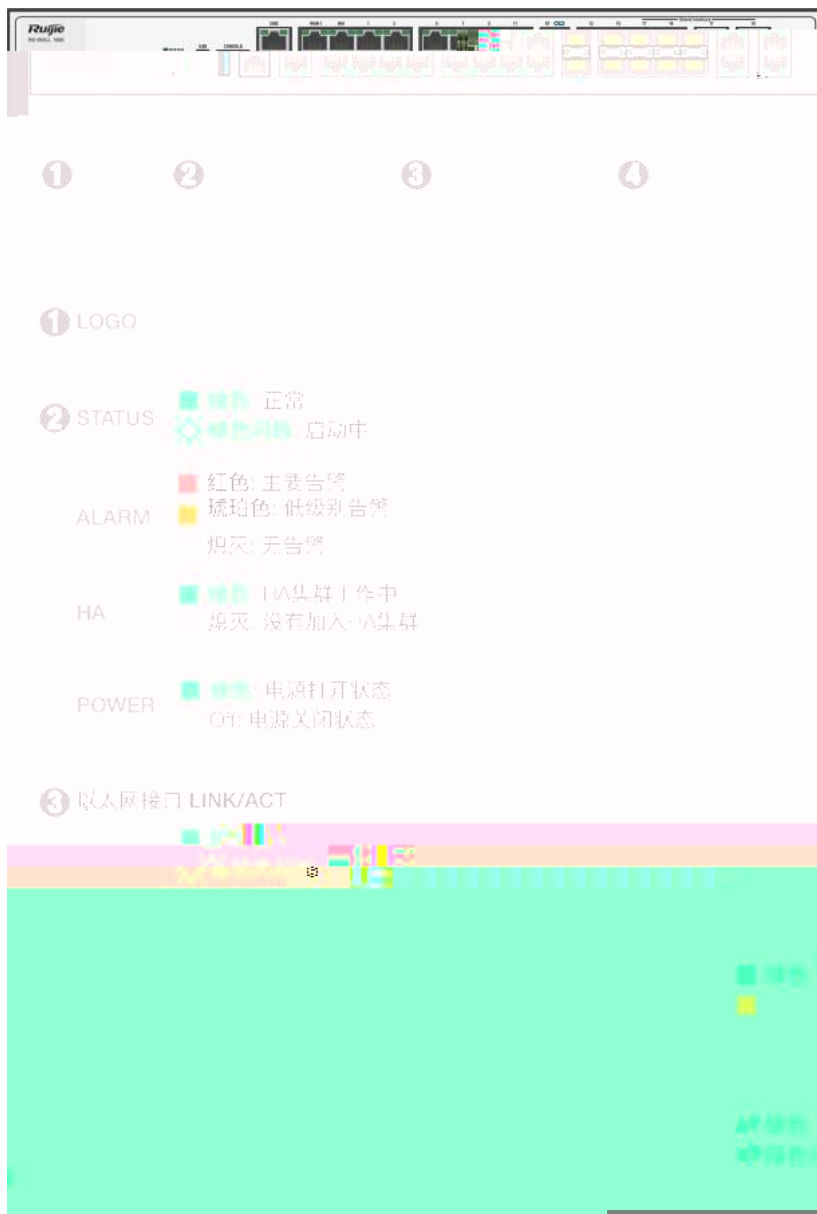
2)

5

5.1

RG-WALL 1600-M5800E

5-1 RG-WALL 1600-M5800E



RG-WALL 1600-M5800E

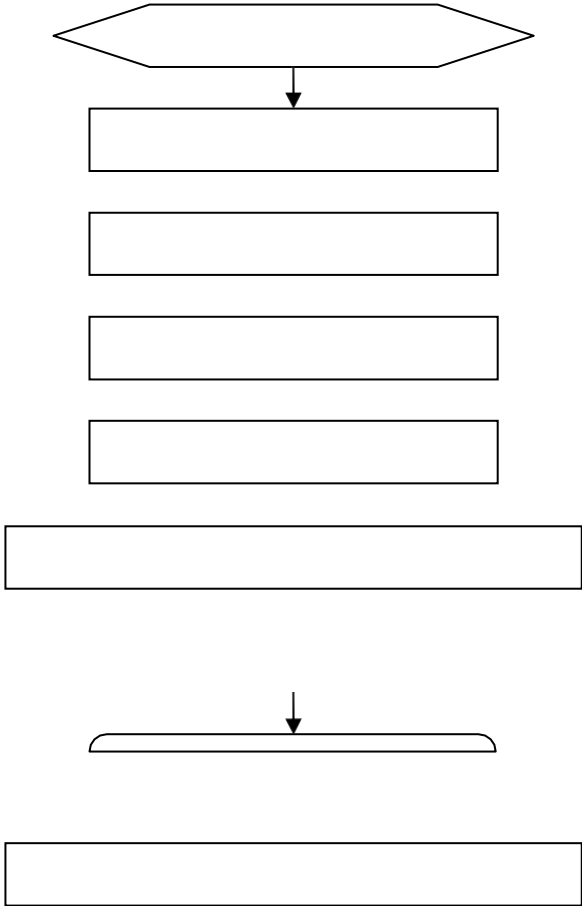
RG-WALL 1600-M5800E
RG-WALL 1600-M5800E

RG-WALL 1600-M5800E

Internet
RG-WALL 1600-M5800E

Telnet

5.2



4

5 **link**

link

1

2

1310nm

1550nm

3

4

A

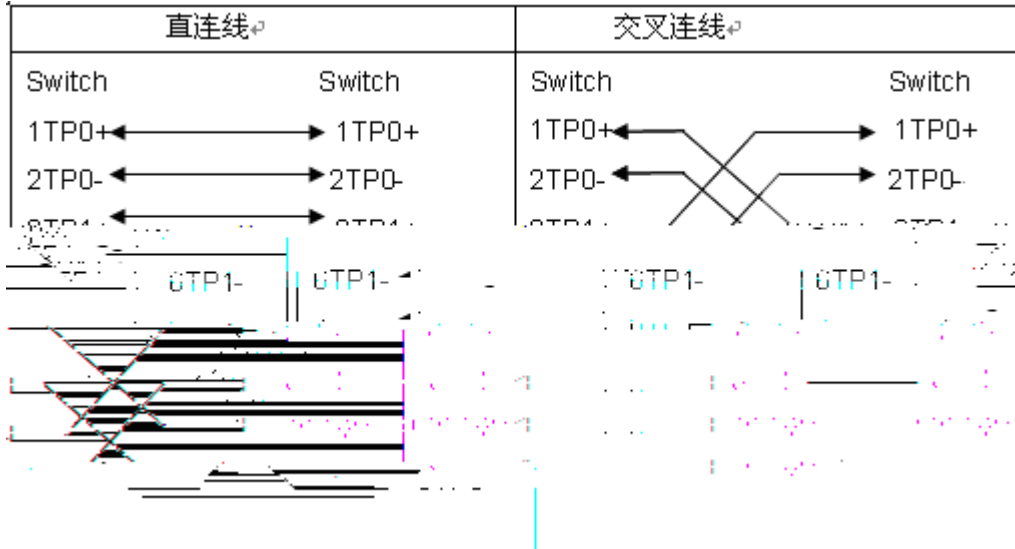
1000BASE-T/100BASE-TX/10BASE-T

1000BASE-T/100BASE-TX/10BASE-T

MDI/MDIX Crossover

1000BASE-T IEEE 802.3ab 100 1000BASE-T 4 100-ohm 5 5 4 UTP STP 1000BASE-T

A-1 1000BASE-T



100BASE-TX/10BASE-T
100-ohm 5 100

10Mbps 100-ohm 3,4,5
100BASE-TX/10BASE-T

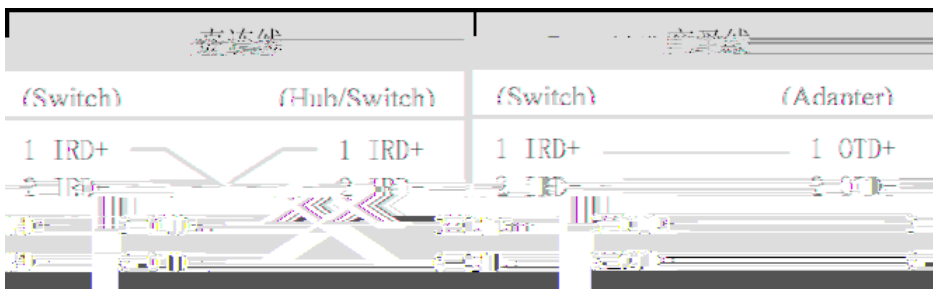
100Mbps

A-2 100BASE-TX/10BASE-T

Pin	插座	插头
1	Input Receive Data+	Output Transmit Data+
2	Input Receive Data-	Output Transmit Data-
3	Control/Receive Data bus (pin 4)	Control/Transmit Data bus (pin 3)
4	Control/Receive Data bus (pin 3)	Control/Transmit Data bus (pin 4)
5	Reserved	Reserved
6	4,5,7,8	Not Used
7	Not Used	Not Used
8	Not Used	Not Used

100BASE-TX/10BASE-T

A-3 100BASE-TX/10BASE-T



16)

D-3

D-3

17)

18) 220V -48V

19)

- 21)
- 22)
- 23)
- 24)

mm	mm
10	80~150
10~30	150~200