

WEB

APP

CLI



WEB

WEB

The screenshot displays a network management interface with several key sections:

- 设备概览 (Device Overview):** Located at the top, it includes tabs for '设备概览' and '设备接口信息'.
- 接口列表 (Interface List):** A table with columns: 接口名称 (Interface Name), 接口类型 (Interface Type), 接口状态 (Interface Status), 所属VLAN (VLAN), and IP地址/掩码 (IP Address/Mask).

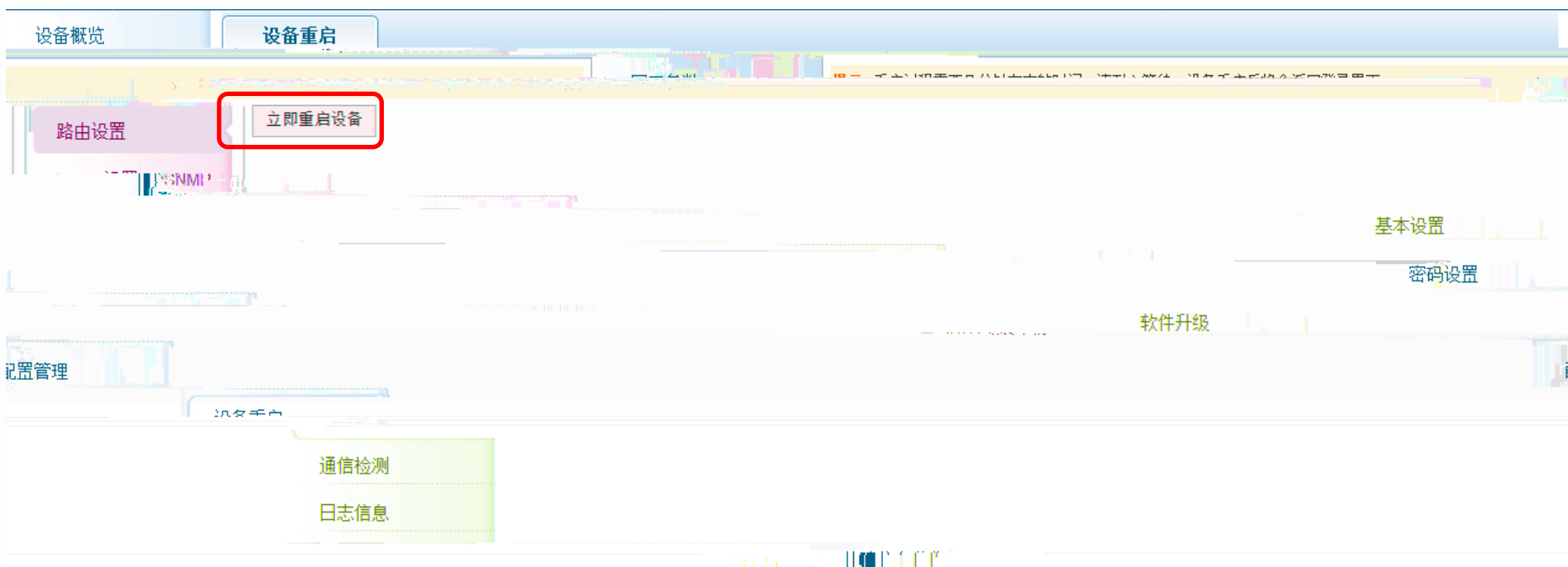
接口名称	接口类型	接口状态	所属VLAN	IP地址/掩码
GigabitEthernet 1/1	二层交换口	已连接	1	
GigabitEthernet 1/2	二层交换口	未连接	1	
GigabitEthernet 1/3	二层交换口	未连接	1	
- 设备温度及内存 (Device Temperature and Memory):** A bar chart on the left side.
- CPU利用率 (CPU Usage):** A gauge showing 0.01% usage.
- 配置管理 (Configuration Management):** A section for managing device configurations.
- 设备信息 (Device Information):** A section providing details about the device, including its model and serial number.
- 日志信息 (Log Information):** A section for viewing system logs.
- 故障信息收集 (Fault Information Collection):** A section for monitoring and collecting fault data.
- 系统时间 (System Time):** Shows the current system time as 2014年 08月 04日 22:50:17.
- 运行时间 (Runtime):** Shows the device has been running for 41天 2小时 8分钟 51秒.

WEB

" config.text"
.text



WEB



WEB

Ping

icmp
Traceroute

4G

WEB

WEB

设备概览

系统日志

网口参数

显示系统日志

路由设置



System Log

System Log

System Log

System Log

密码设置

软件升级

配置管理

配置检测

日志信息

配置信息收集

System Log

File name: rrsr820-tlog.txt, size 128 Kbytes, have written 8 files

Standard format: false

System Log

System Log

WEB

CPU

设备概览

故障信息收集

网口参数

非传统配置

路由设置

SNMP设置

基本设置

System start time : 2014-08-04 15:50:17

密码设置

软件升级

System BOOT version : 10.4(3b13)T19 Release(175810)

日志信息

故障信息收集



Ruijie

www.ruijie.com.cn

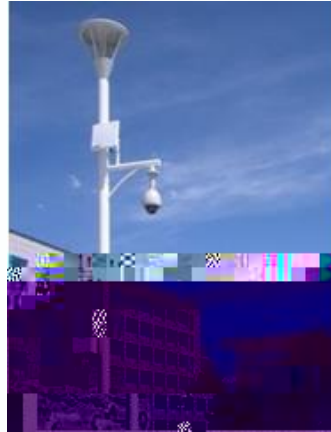
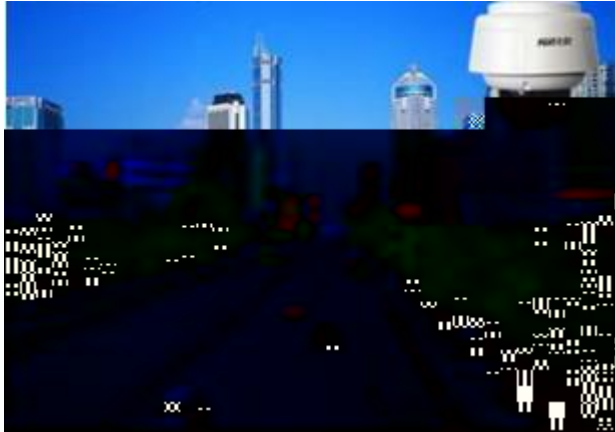
WEB

APP

CLI



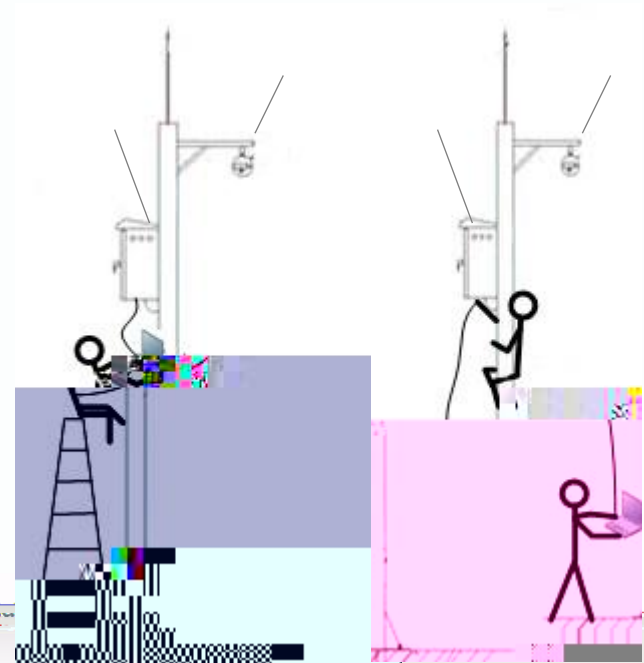
APP



1

2

RSR10-01G-TD-LTE RSR820-T/820-T(A)





APP

Android

Android

"

" APP

<http://bnm.ruijie.com.cn>

"

"



APP

10



" 1234 "



APP



APP

4G
4G
SIM
CPU

4G

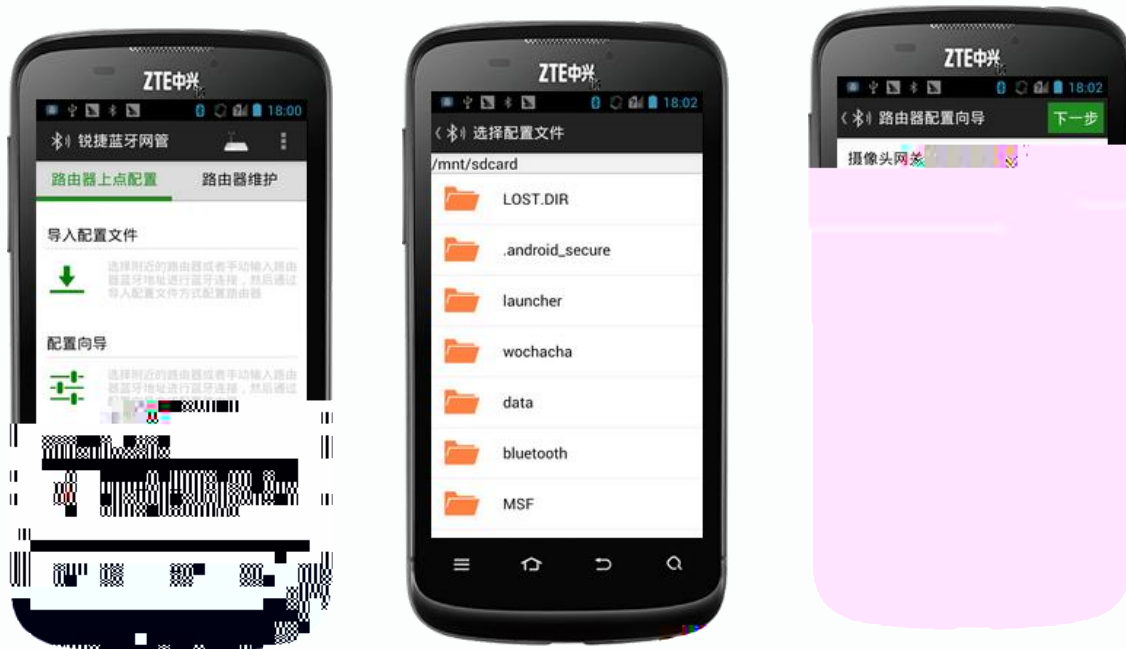
APP

.text

SD

"

"





APP

RUIHE

www.ruihe.com.cn

APP

ICMP

4G

XX

4G

APP





APP

CLI

CLI

1

2

3

4

5

APP

APP

IP



APP

APP
txt

2G/3G/4G



APP

wifi

10

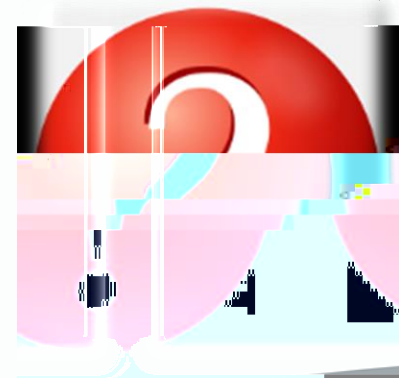
10

ruijie

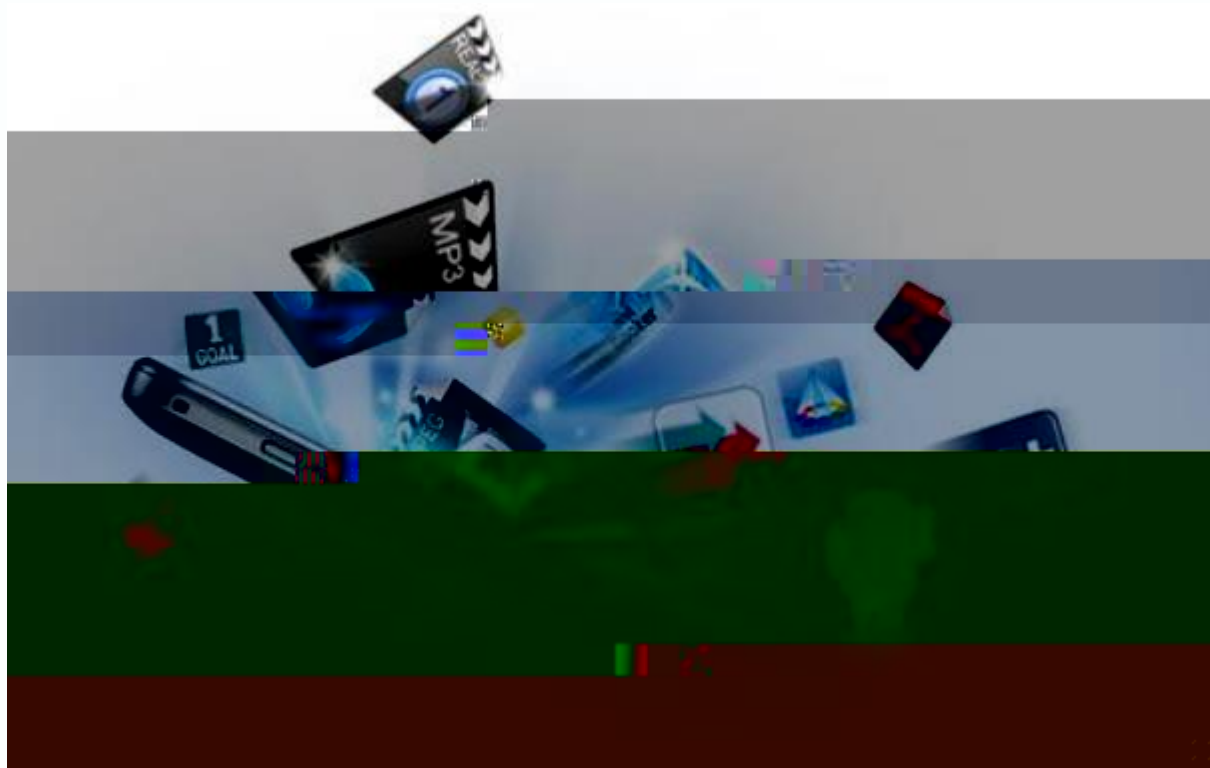
ruijie

0000

1234



APP



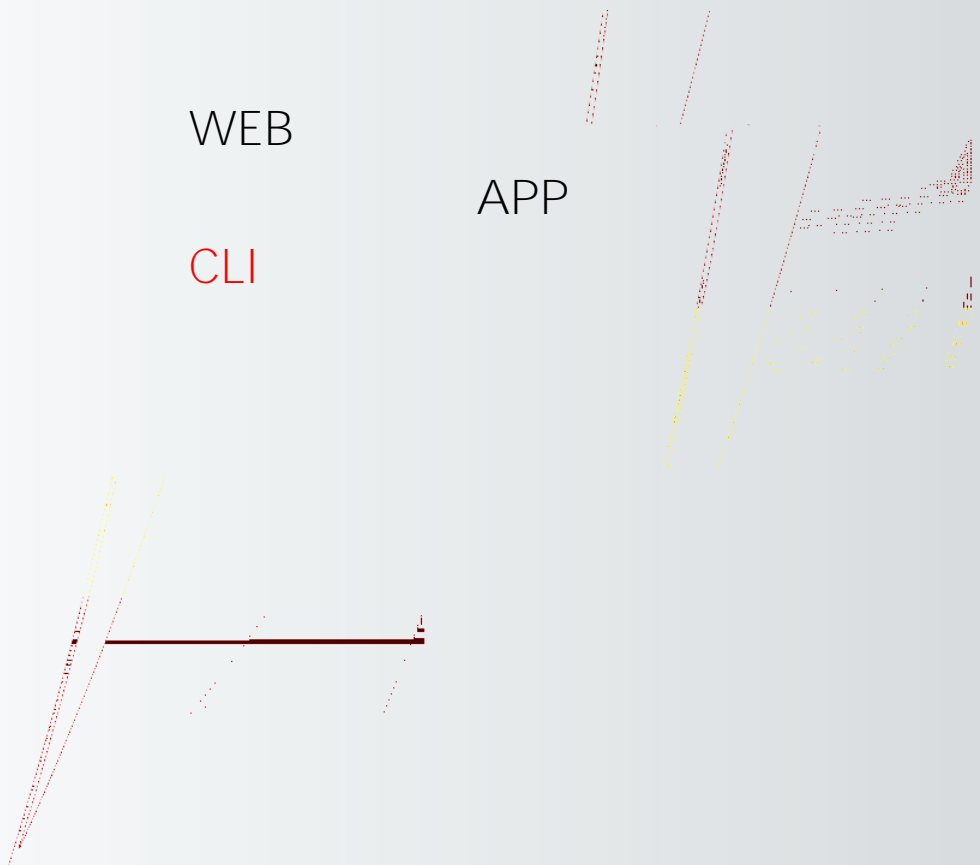
APP



WEB

APP

CLI



CLI

CLI

RSR820

RGOS

CLI

RGOS

CPU

show cpu cpu

Ruijie#show cpu

=====

CPU Using Rate Information

CPU utilization in five seconds: 12.12%

CPU utilization in one minute : 12.07%

CPU utilization in five minutes: 12.07%

show memory

Ruijie#show memory

System Memory Statistic:

Free pages: 54998

watermarks : min 2140, lower 4025, low 5910, high 7795

System Total Memory : 512MB, Current Free Memory : 225428KB

Used Rate : 57%



CLI

show interface

CLI

```
show log  
UP/DOWN DOWN !
```

```
flash
```

```
flash
```

```
Ruijie(config)#logging file flash:log 2000000 7 // 记录到flash
```



WEB

WEB IP

WEB

WEB

console

WEB IP

IP

<http://192.168.1.1>

Ruijie#show ip interface brief

Interface	IP-Address(Pri)	IP-Address(Sec)	Status	Protocol
VLAN 1	192.168.57.92/24	no address	up	up
Tunnel 1	2.2.2.2/24	no address	up	down
Cellular 0/0	no address	no address	down	down

console

Ruijie#show service

.....

web-server : enabled

web-server(https): enabled



console

console

PC

COM

Console

console



WEB

console

%Now Begin Download File FileList.txt From 192.168.64.1 to 192.168.64.78

send download request.

send download request.

.....

RGOS

TFTP

"

"

BOOT



show slot



WEB

WEB

路由设置

恢复出厂设置

SNMP设置

基本设置

密码设置

软件升级

配置管理

设备重启

通信检测

日志信息

故障信息收集

Ruijie

www.ruijie.com.cn

MAIN

Ruijie#dir

Directory of flash:/

Mode	Link	Size	MTime	Name
1		2363	2013-01-15 10:07:19	config.text
1		15107168	2013-01-15 09:47:59	rgos.bin

.....

Ruijie#copy flash:config.text flash:config.bak// config.bak

Ruijie#delete config.text //

Are you sure you want to delete " config.text" ?[No/yes]yes //

Ruijie#reload //

Proceed with reload? [no]y //

BOOT

console

" Press Ctrl+C to enter Boot" ctrl+c

boot

BootLoader>dir

Directory of flash:/

Mode	Link	Size	MTime	Name
1		512	2013-01-09 23:07:03	Boot_hotcmd.cfg
1		2363	2013-01-15 10:07:19	config.text
.....				
1		15107168	2013-01-15 09:47:59	rgos.bin

BOOT

BootLoader>rename config.text config.bak // config.bak

BootLoader>delete config.text //

BootLoader>load //

.....



WEB

WEB

" "

" "

" "


注意事项:

1. 软件升级可以系统固件 (*.bin)，升级完成后必须重启设备。
2. 软件升级可以升级MIB (*.mib)，升级完成后无需重启设备。

版本信息	
硬件版本:	1.00
软件版本:	RGOS 10.4(3b13)T19
WEB版本:	1.1.3(1.00433)

软件升级

TE_10.4(3b13)T19_R17703 | 浏览...

进度:  100%

信息: 升级成功。

升级 | 开始升级

升级 | 配置管理 | 设备重启 | 故障信息收集

升级 | 配置管理 | 设备重启 | 故障信息收集 | 日志信息

MAIN

	PC	IP		PC
PC	TFTP			TFTP
		TFTP		FLASH

copy tftp://[pc_ip]/[file_name] flash:rgos.bin

Ruijie#copy tftp://1.1.1.1/rgos.bin flash:rgos.bin

1.1.1.1 PC



BOOT

PC

TFTP

TFTP

ctrl+C

ROM

TFTP



RUIHE

www.ruihe.com.cn

www.ruijie.com.cn

www.ruijie.com.cn/service.aspx

support.ruijie.com.cn

webchat.ruijie.com.cn

4008-111-000