



PACS

2.4G

2.4G

APD 5G

5G

1
11ac

AP4210

AP4220

2.4G

2.4G 5G

2
HPOE

APD-M AC

APD-M EA
POE

3
2.4G+5G

11AC

2.0





AP

--RG-AP4220

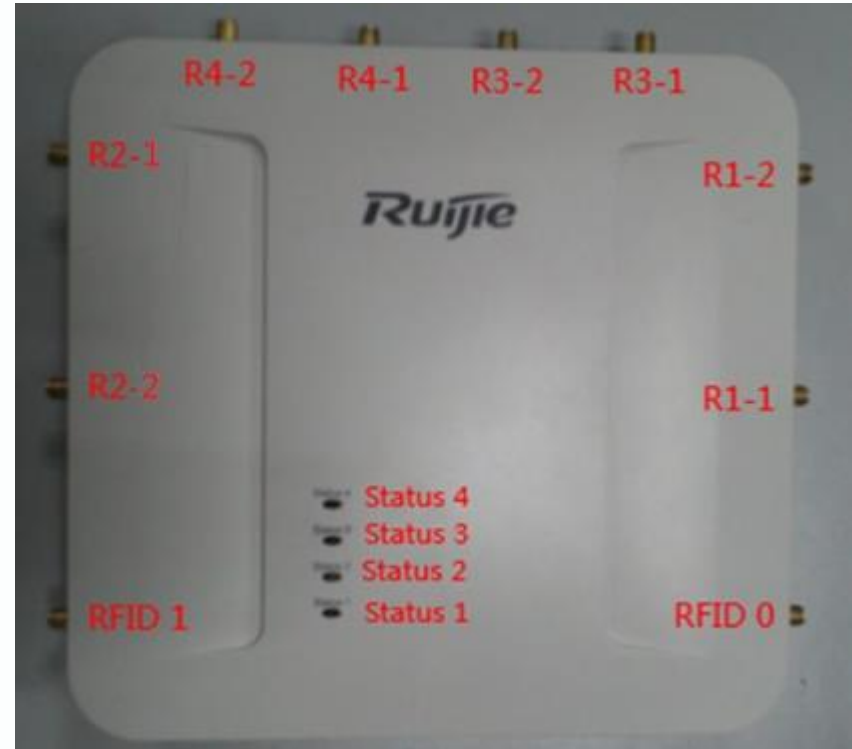
AP4220 10 8 WIFI 2

RFID 4

STATUS 1 R1-1 R1-2
R1-1 R1-2
R1-1 R1-2
R1-1 R1-2
R1-1 R1-2
radio

console LAN/POE

48V power LAN



AP

--RG-AP4220

		RG-AP4220
		AP
		802.11/b/g/n 802.11a/n/ac
		48V /0.5A DC
	POE	802.3af
		12.95W
		-10 50
		-40 70
		10% 95%
		5% 95%
x	x	mm
		200x190x35
		Kg
		0.8Kg



— — RG-APD-M(EA)

APD-M(EA)	APD-M(AC)	POE	6	radio	radio	1	3	LAN	LAN2	HPOE
AP4220	2.4G+5G								2.4G+5G	2
APD-M(EA)	13		1	AP4220						
	6									



— — RG-APD-M EA



	18 SMA SMA RG-Cab-SMA- 18m-MJ	35 SMA SMA RG-Cab-SMA- 35m-MJ	5/10/15 SMA SMA SMA RG-DCAB-SMA- 5m/10m/15m-SP
(MHz)	2400 2500 5150~5850	2400 2500 5150~5850	2400 2500 5150~5850
(m)	18	35	5/10
	1.3	1.3	1.3
()	50	50	50
	SMA-SMA	SMA-SMA	SMA-SMA
	-10 +55	-10 +55	-10 +55
	-40 +70	-40 +70	-40 +70
	10%~ 95%	10%~ 95%	10%~ 95%
	5%~95%	5%~95%	5%~95%
	ROSH	ROSH	ROSH

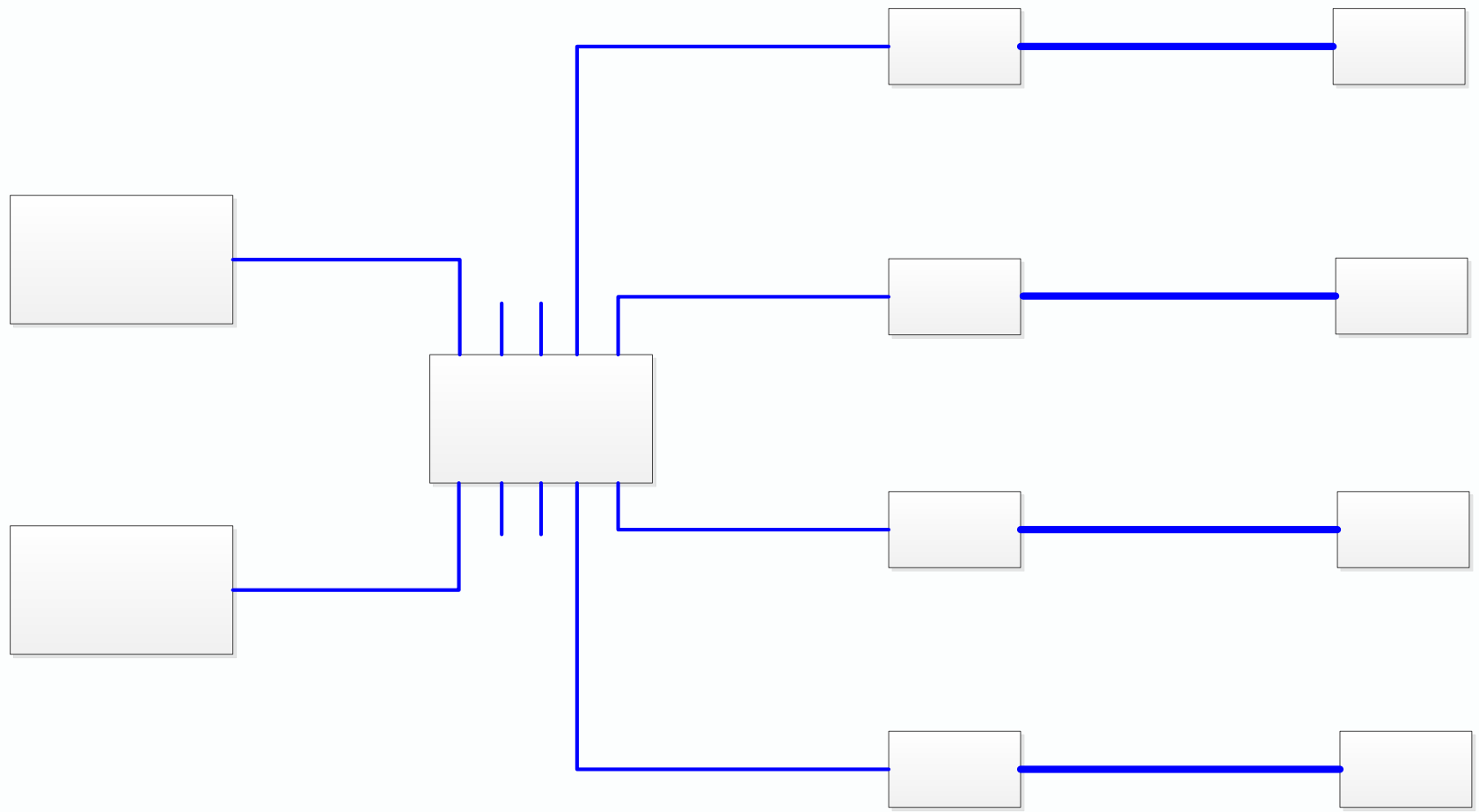


— — RG-IOA-



POE	XXXX-12/24P	1	POE
RG-AP4220	RG-AP4220	1	AP
	RG-APD-M EA	8	
RG-Cab-SMA-18m-MJ	SMA SMA 18m	8	18
RG-Cab-SMA-35m-MJ	SMA SMA 35m		35
RG-DCAB-SMA-5m	SMA SMA 5m	48	SMA SMA 5m
RG-DCAB-SMA-10m	SMA SMA 10m		SMA SMA 10m & fi

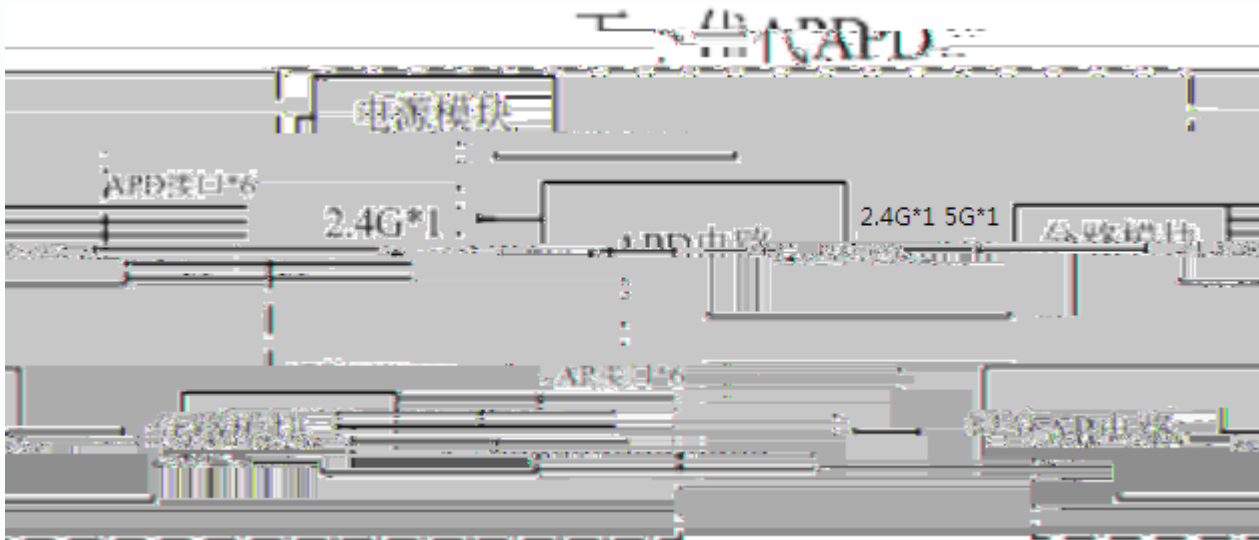




APD-M EA

4

- 1 2.4G
- 2 5G 11ac
- 3 2.4G

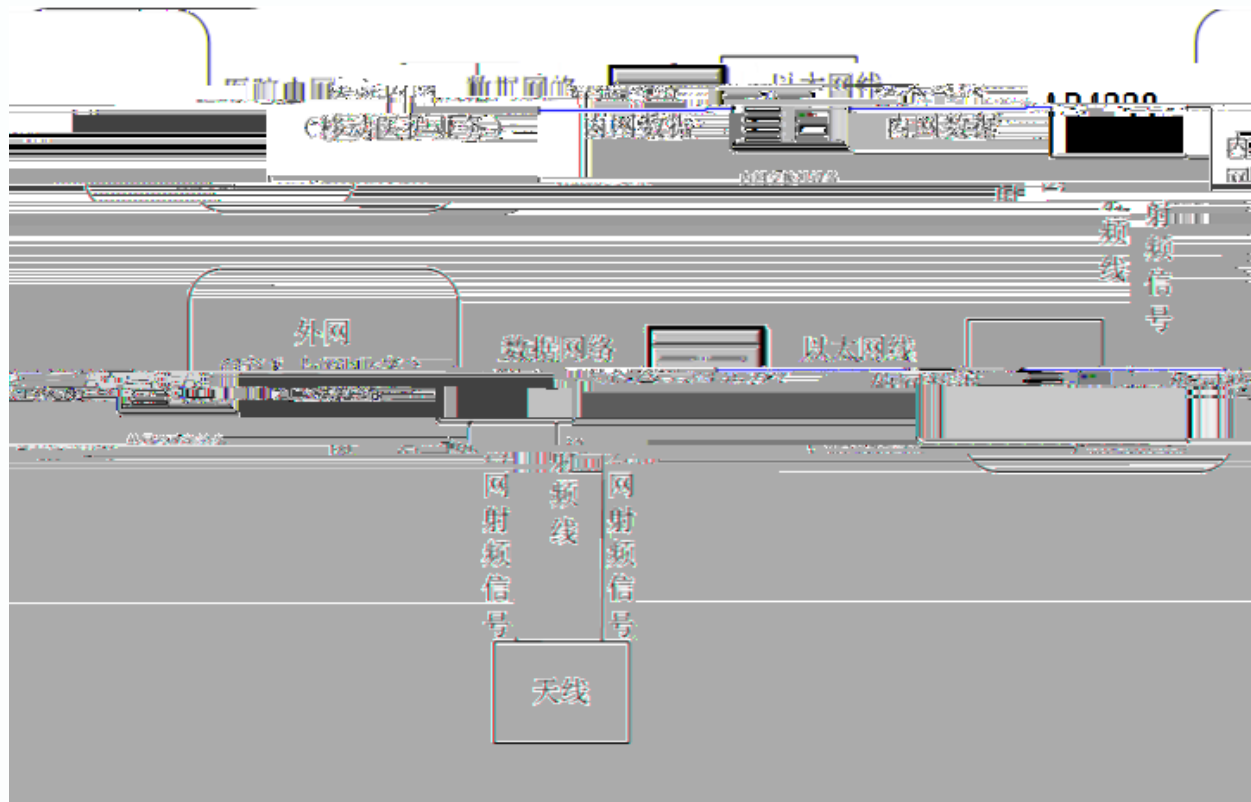


AP4220

APD-M EA

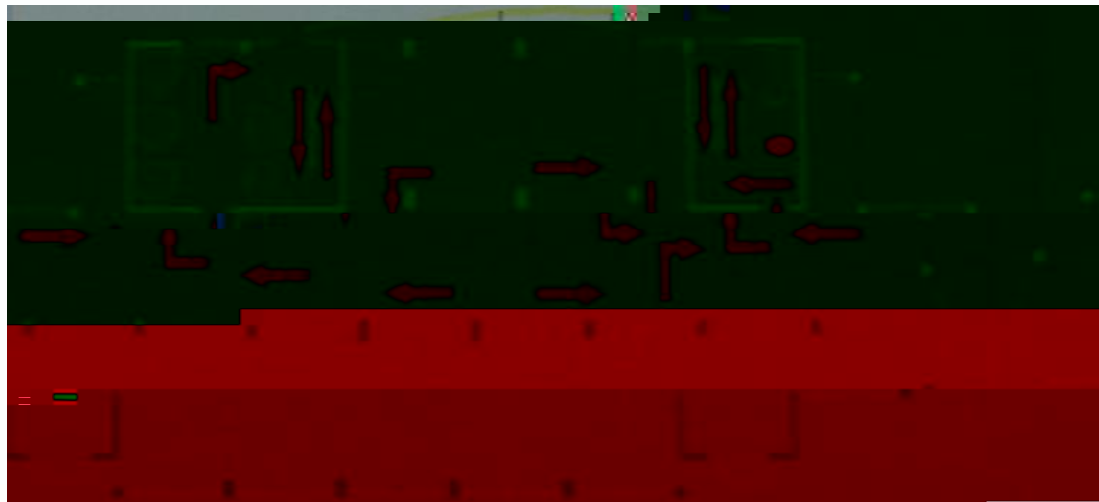
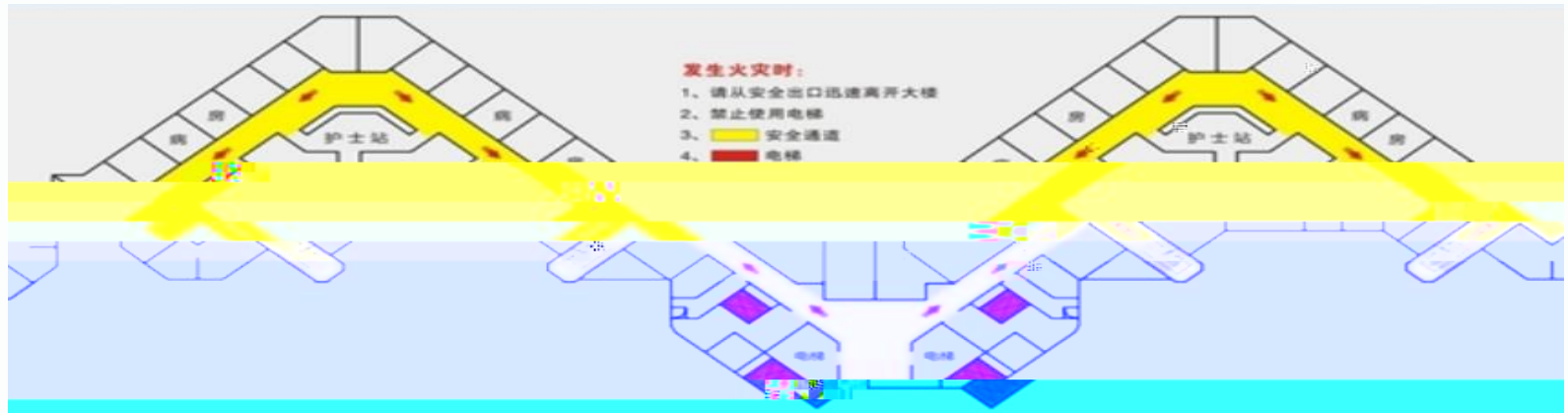
APD

AP





20



1									
	a							48	
	b		AP				50		100
2			1	AP					
3				APD					
		4	2						
4			1		1				
5		5G						8	
	L				L				
6			AP						
7	APD-M	EA	POE+			POE			
					1	AP4220+8	APD-M	EA	
	2928G-12P					24P			
8	APD-M	EA		AP			AC	license	
			9	AP	AP4220+8	APD			
9	APD-M	EA		HPOE			LAN2		POE



AP4220 APD-M EA

1 AP4220 2.4G+5.8G 11ac
40Mb+200Mb

50Mb+270Mb

	2	5~6
	1~2	



APD-M	EA	ap	11	1	
AP4220	1	6			SSID

```
ap-config APD-EA-4  
ap-mac 00d0.f822.35ba  
ap-group APDMEA  
no fair-schedule  
channel 11 radio 1  
channel 36 radio 2  
chan-width 40 radio 2  
apsd disable radio 1  
apsd disable radio 2  
antdetect enable
```

/ AP /

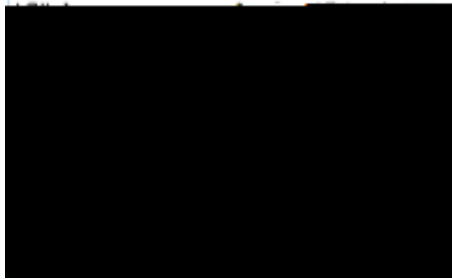
AP4220 APD

antdetect enable

```
AC#show antenna all
```

ap	0120	0120	0120	0120	0120	0120
	- N N -	- N N -	- Y Y -	- Y N -	- - - -	- - - -AP4220
	- Y Y -	- Y Y -	- Y Y -	- Y Y -	- Y Y -	- N N -APD-02
	- Y Y -	- Y Y -	- Y Y -	- N N -	- Y Y -	- Y Y -APD-03
	- Y Y -	- Y Y -	- Y Y -	- N N -	- Y Y -	- Y Y -APD-01

AC



AP

```
Ruijie#show antenna
```

```

R1 antenna 1: Y
R1 antenna 2: Y
R2 antenna 1: Y
R2 antenna 2: Y
R3 antenna 1: Y
R3 antenna 2: Y
R4 antenna 1: N
R4 antenna 2: N

```

```

--
1.2.3: 1  2.1.1: 1

```

APD-M EA
2.4G APD 5G 5G 11ac
11AC } APD-M EA

ap-config APD-1

no zero-roam enable 5g

antenna receive 3 radio 2

antenna transmit 3 radio 2

LAN POE APD-M EA LAN 2 HPOE
POE

```
ap-config APD-1  
wired-poe enable port 2
```

```
interface gigabitEthernet 0/2  
wired-poe enable
```

1 APD-M EA AP HOPE

2 APD-M EA lan





2.4G 1
 -30~-35dBm APD
 35~-40 10db

5G 1
 APD -40~-50dBm
 10db

1

2 6
 AP4220
 AP4220





1. PoE

POE/POE+

2.



AP4220 5G

1

2 APD-M EA radio 1 AP (2.4G +5G11ac) 2 AP4220
X5/X6

3

4 FTP short-gi FTP server client

5

APD-M EA

AP

6 APD-M EA 2.4G+5G 2.0

APD 2.4G +5G 2.4G

7 5G

\$



29 A 11 100036
Office Tel: 010-51718888 Mobile Tel: 13888888888 Fax: 010-51718888
www.ruijie.com.cn E-Mail: xxx@ruijie.com.cn