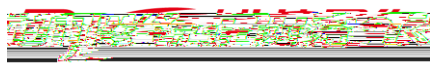
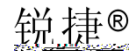




©2013



**Ruijie**



<http://www.ruijie.com.cn/>

	RG-WALL1600-M5100E
	1.0
	PDF


# 1

RG-WALL1600-M5100E

IPSec SSL VPN Web  
IPv4 IPv6 NAC SSL

RG-WALL1600-M5100E

RG-WALL1600-M5100E

## 1.1 RG-WALL1600-M5100E

	RG-WALL1600-M5100E
	0 to 40°C
	-25 to 70°C
	20% 90% RH
	5.6Kg
	394x432 x 44.45 L * W * H mm 1RU
	100-240 VAC, 50-60 Hz
	110 V / 3 A, 220 V / 1.5 A
/	34W/40 W
	335 BTU/h

RG-M5100E

A

RG-WALL1600-M5100E

1

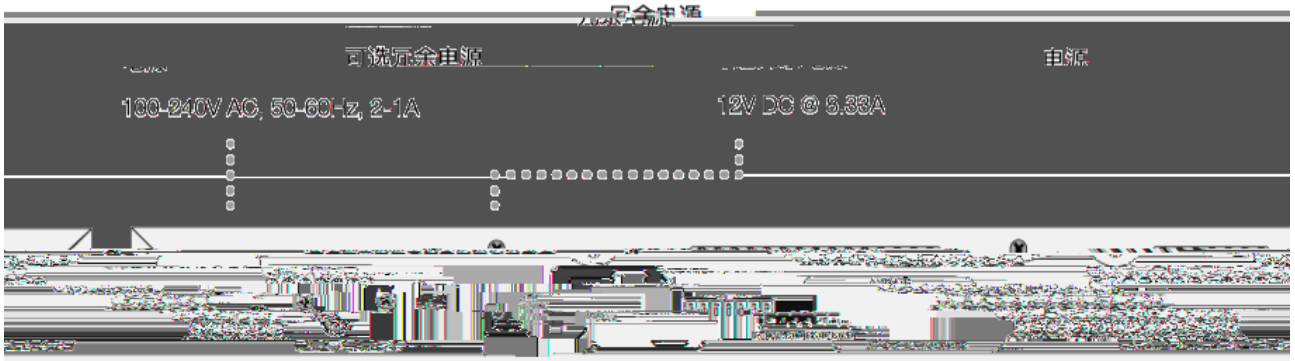
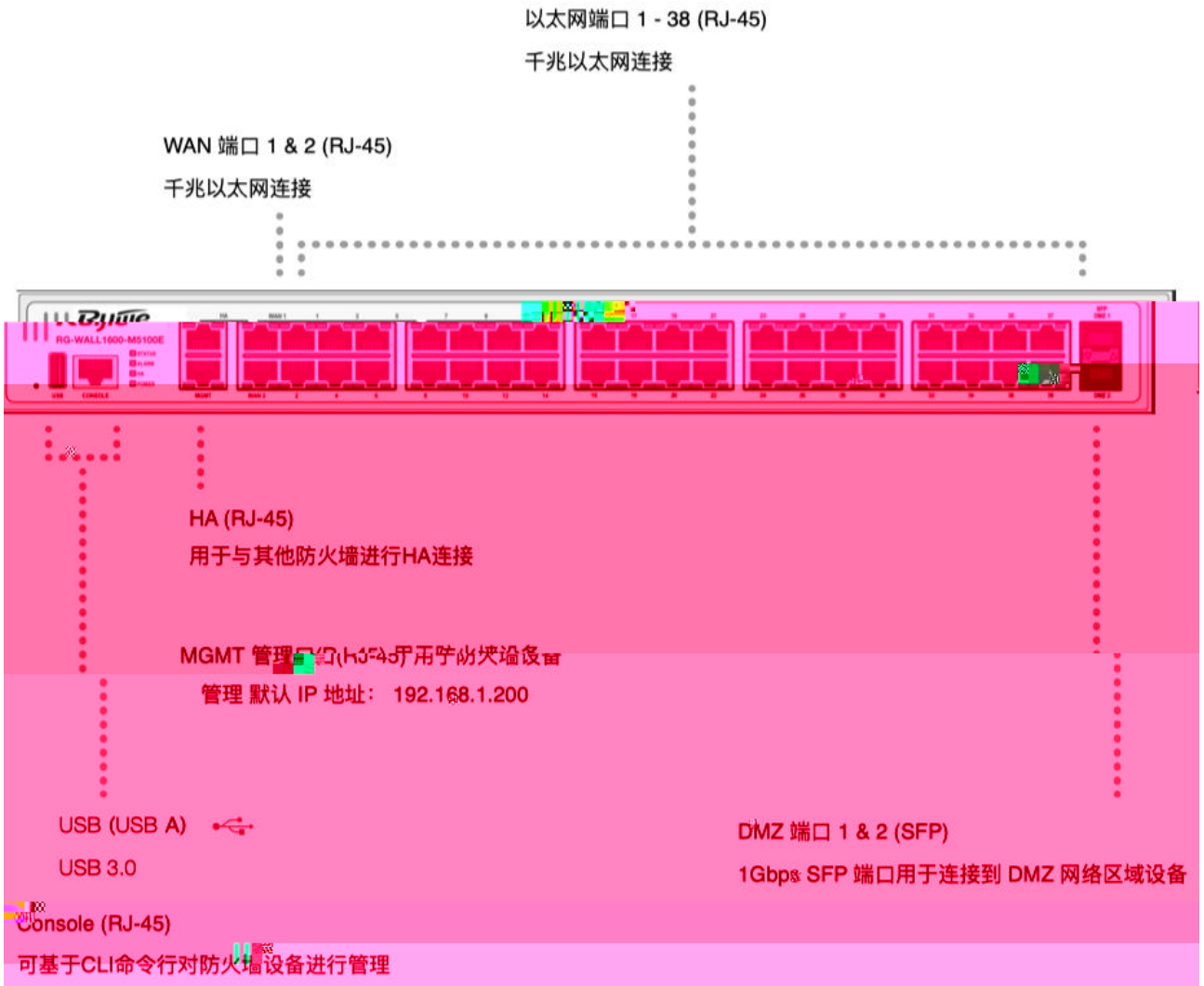
3+5 Q ‡ Ö3+5 Q ‡

1 USB

RG-WALL1600-M5100E

1-2

1-2 RG-WALL1600-M5100E



---

## 2

## 0μ\$#Ä

### 2.1

---

RG-WALL1600-M5100E

---

#### 2.1.1

#### 2.1.2



## **2.2.3**

RG-WALL1600-M5100E

**2.2.7 EMI**

**2.3**

**2.4**


---

RG-WALL1600-M5100E

---

**2.5**

	2	2	USB	2	Console	8	4
			SFP				

---

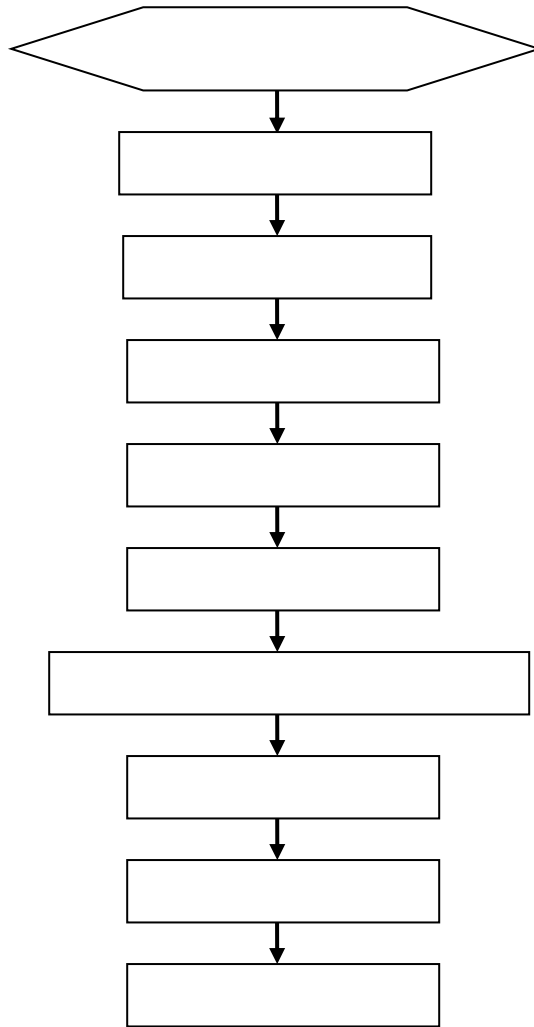
### 3

RG-WALL1600-M5100E

---

---

#### 3.1



#### 3.2

RG-WALL1600-M5100E

## 3.3



1)

2)

3)

4)

### 3.7

1)

2)

3)

### 3.8

### 3.9

**G: D**

---

SFP

---

SFP

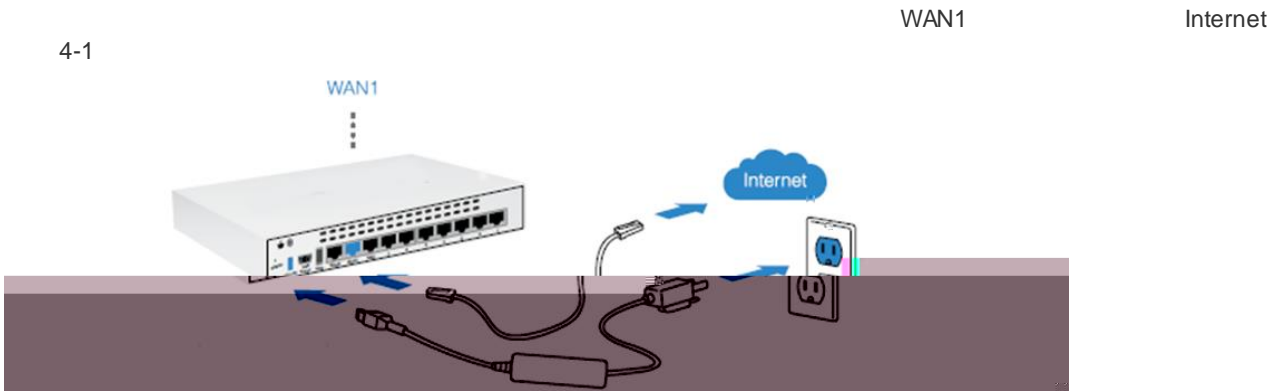
4)

5)

6)

# 4

## 4.1



4-1

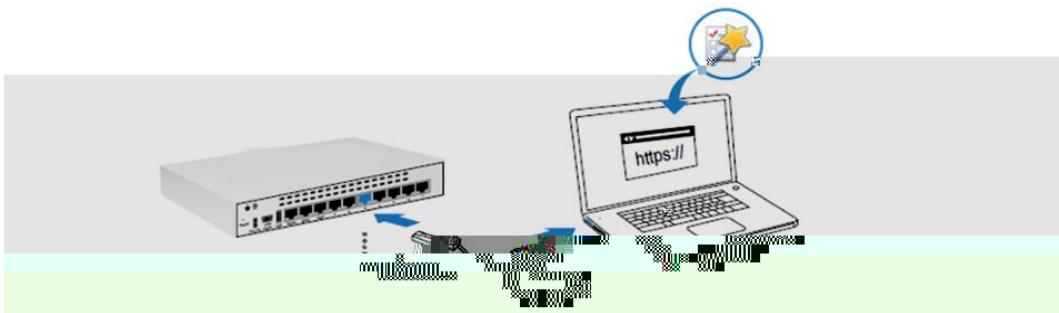
Web

admin

LAN

PC

IP : <https://192.168.1.99>



4-2

## 7 cbgc`Y

PC

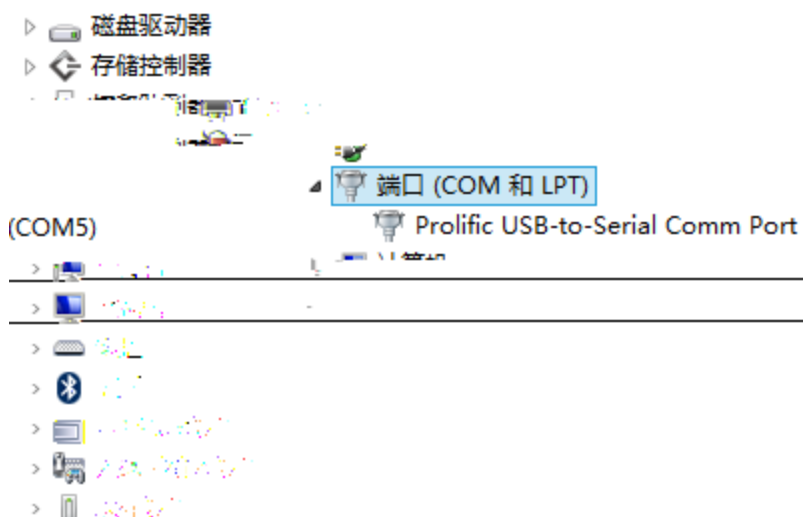
Console

12)

14

13)

USB	Console	USB	Console	Console	USB	PC	
	PC				COM	LPT	COM
	4-3						



(COM5)

Prolific USB-to-Serial Comm Port

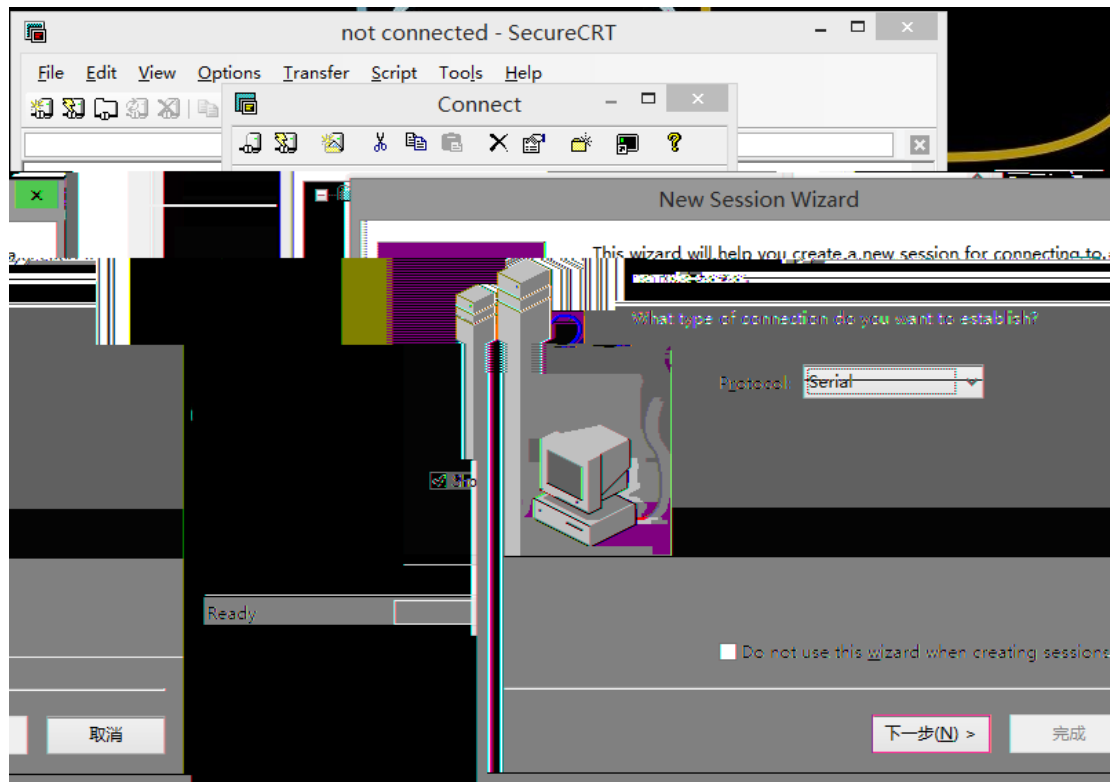
4-3

9600

8

1

14)







## 5

### 5.1

RG-WALL1600-M5100E

---

RG-WALL1600-M5100E  
RG-WALL1600-M5100E

RG-WALL1600-M5100E Internet  
RG-WALL1600-M5100E

Telnet

---

## 5.2

## 6

### 6.1

### 6.2

%

(

)     `]b\_

link

1

2

3

4

1310nm

1550nm

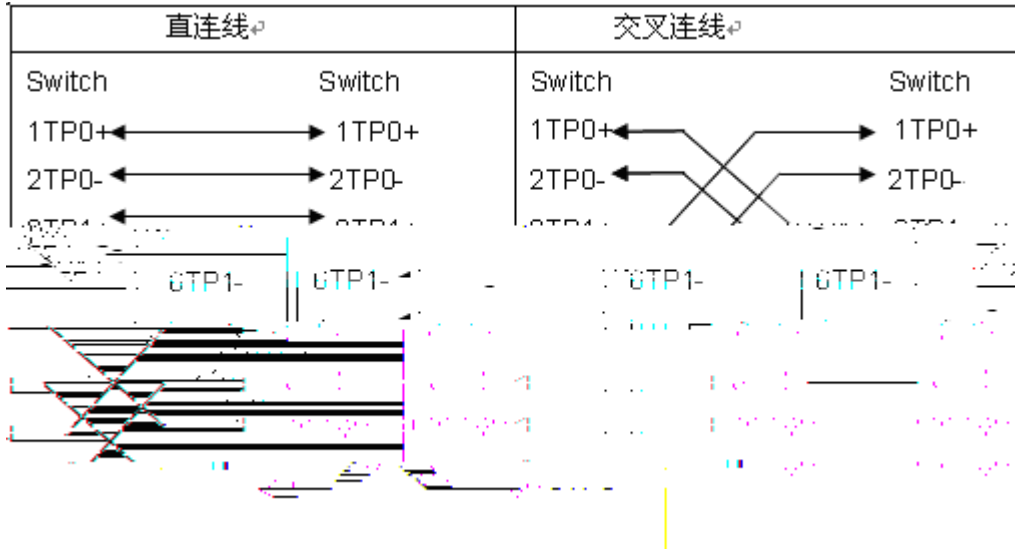
# A 1 1

1000BASE-T/100BASE-TX/10BASE-T

MDI/MDIX Crossover

1000BASE-T IEEE 802.3ab 100 1000BASE-T 4 100-ohm 5 5 4 UTP STP 1000BASE-T

A-1 1000BASE-T



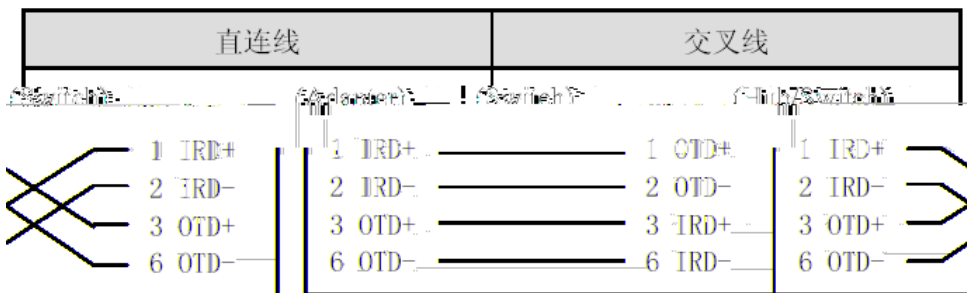
100BASE-TX/10BASE-T 100 100Mbps 100-ohm 5 10Mbps 100-ohm 3,4,5 100BASE-TX/10BASE-T 100Mbps

A-2 100BASE-TX/10BASE-T

Pin	插座	插头
1	Input Receive Data+	Output Transmit Data+
2	Input Receive Data-	Output Transmit Data-
3	Input Receive Data+	Output Transmit Data-
6	Input Receive Data-	Output Transmit Data+

100BASE-TX/10BASE-T

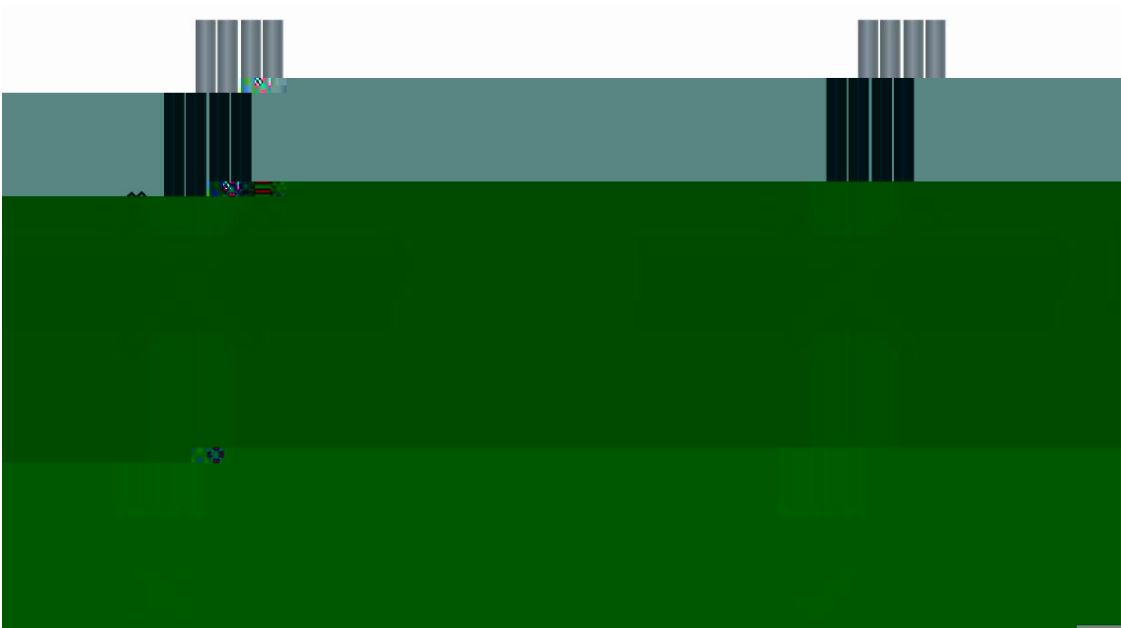
A-3 100BASE-TX/10BASE-T



A 4







D-3

D-3



220V

-48V

D-4

D-4

mm	mm
10	80~150
10~30	150~200
30	200~300